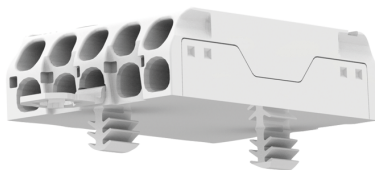
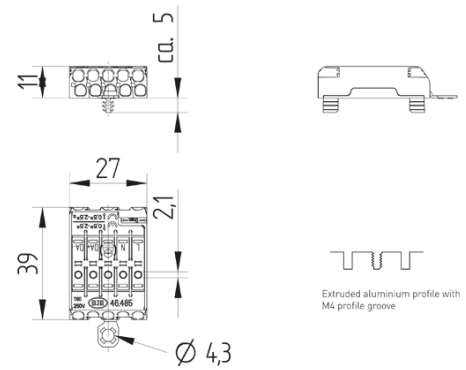
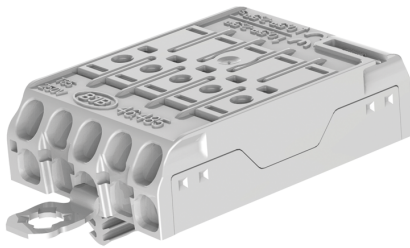
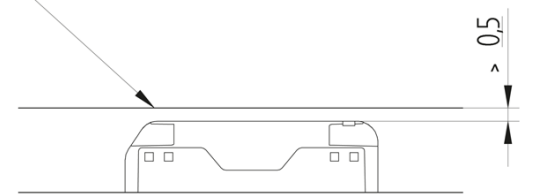


Flat Terminal block 5 poles with earth bracket, snap-in pins Aluprofile LNEZDA+DA- and contact opening function 46.485.4116.50



Minimum mounting distance
Metal surface



Compliance with creepage distances and clearances
has to be ensured by the structural design of the luminaire.

CAD

T 85
-35°C



max. ø 1,8 mm



max. ø 1,8 mm



0,5 - 1,2



24A

250 V
400 V

Flat Terminal block 5 poles with earth bracket, snap-in pins Aluprofile LNEZDA+DA- and contact opening function 46.485.4116.50



DESCRIPTION

Flat terminal block 5 pole with contact opening function

Upper terminal connection: 0.5 - 2.5 mm²

Direct insertion of solid wire ends and finely stranded wire ends by using the contact opening function Contact opening function - also for release of already inserted wires

Lower terminal connection:

- 0.5 - 2.5 mm² for solid wire ends

- 1.5 - 2.5 mm² for rigid and stranded wire ends

- Wire release function by twisting and pulling

Strip length: 9 ±1 mm

Top Test openings

Approvals: ÖVE Reg. Compliance with creepage distances and clearances (eg according to EN 60598) has to be ensured by the structural design of the luminaire.

Product name:	Flat Terminal block 5 poles with earth bracket, snap-in pins Aluprofile LNEZDA+DA- and contact opening function
---------------	---

Mounting method 1:	snap-in pins Aluprofile LNEZDA+DA- for use in extruded aluminum profiles with M4 profil groove
--------------------	--

Material:	Housing: PA, beige, PC, white
-----------	-------------------------------

Marking:	L N ?DA+ DA-
----------	--------------

Earth contact:	Earth bracket
----------------	---------------

Material thickness:	0.5 - 1.2
---------------------	-----------

Contact opening:	With integral cable release
------------------	-----------------------------

Quantity of poles:	5
--------------------	---

Pkg.:	500
-------	-----