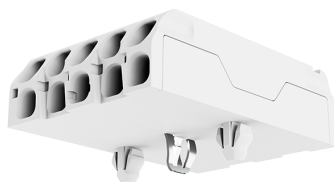
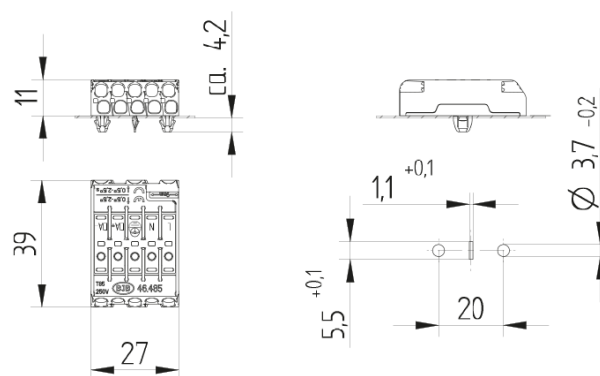
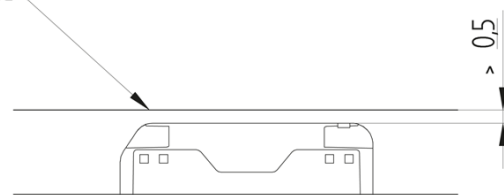


Flat Terminal block 5 poles with REC, snap-in pins LNEZDA+DA- and contact opening function 46.485.1118.50



Minimum mounting distance
Metal surface



Compliance with creepage distances and clearances
has to be ensured by the structural design of the luminaire.

CAD

T 85
-35°C



max. ø 1,8 mm



max. ø 1,8 mm



0,5 - 1,2



24A



250 V
400 V

Flat Terminal block 5 poles with REC, snap-in pins LNEZDA+DA- and contact opening function 46.485.1118.50



DESCRIPTION

Flat terminal block 5 pole with contact opening function

Upper terminal connection: 0.5 - 2.5 mm²

Direct insertion of solid wire ends and finely stranded wire ends by using the contact opening function

Contact opening function - also for release of already inserted wires

Lower terminal connection:

- 0.5 - 2.5 mm² for solid wire ends

- 1.5 - 2.5 mm² for rigid and stranded wire ends

- Wire release function by twisting and pulling

Strip length: 9 ±1 mm

Top Test openings

Approvals: ÖVE Reg.

Compliance with creepage distances and clearances (eg according to EN 60598) has to be ensured by the structural design of the luminaire.

Sheet metall cutout is compatible to 46.415.1115.50

Product is identical to 46.485.1115, but with different labeling L N EZ DA+ DA-

Product name:	Flat Terminal block 5 poles with REC, snap-in pins LNEZDA+DA- and contact opening function
Mounting method 1:	Snap-in pins LNEZDA+DA-
Material:	Housing: PA, beige, PC, white
Marking:	L N ? DA+ DA-
Earth contact:	Rapid Earth Contact
Material thickness:	0.5 - 1.2
Contact opening:	With integral cable release
Quantity of poles:	5
Pkg.:	500