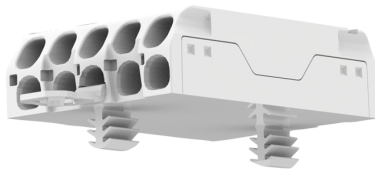
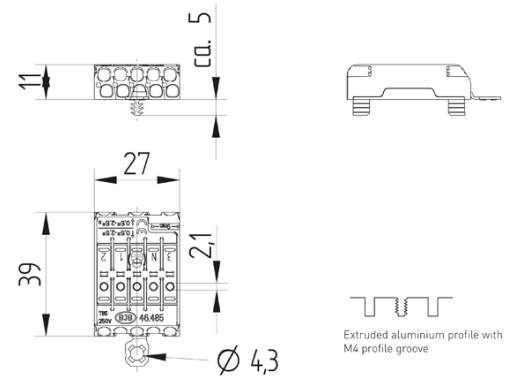
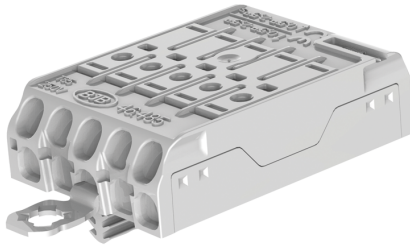
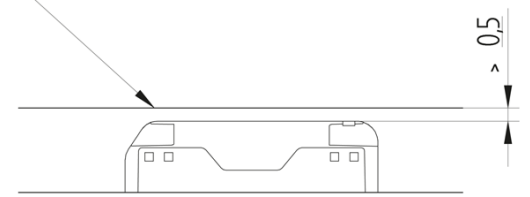


# Flat Terminal block 5 poles with Earth bracket, snap-in pins Aluprofile 3NEZ12 and contact opening function 46.485.4114.50



Minimum mounting distance  
Metal surface



Compliance with creepage distances and clearances has to be ensured by the structural design of the luminaire.

CAD

T 85  
-35°C



max. ø 1,8 mm



max. ø 1,8 mm



0,5 - 1,2



24A

250 V  
400 V

# Flat Terminal block 5 poles with Earth bracket, snap-in pins Aluprofile 3NEZ12 and contact opening function 46.485.4114.50



## DESCRIPTION

Flat terminal block 5 pole with contact opening function

Upper terminal connection: 0.5 - 2.5 mm<sup>2</sup>

Direct insertion of solid wire ends and finely stranded wire ends by using the contact opening function Contact opening function - also for release of already inserted wires

Lower terminal connection:

- 0.5 - 2.5 mm<sup>2</sup> for solid wire ends

- 1.5 - 2.5 mm<sup>2</sup> for rigid and stranded wire ends

- Wire release function by twisting and pulling

Strip length: 9 ±1 mm

Top Test openings

Approvals: ÖVE Reg. Compliance with creepage distances and clearances (eg according to EN 60598) has to be ensured by the structural design of the luminaire.

Product name:	Flat Terminal block 5 poles with Earth bracket, snap-in pins Aluprofile 3NEZ12 and contact opening function
---------------	---

Mounting method 1:	Snap-in pins Aluprofile 3NEZ12 for use in extruded aluminum profiles with M4 profil groove
--------------------	--

Material:	Housing: PA, beige, PC, white
-----------	-------------------------------

Marking:	3 N ? 1 2
----------	-----------

Earth contact:	Earth bracket
----------------	---------------

Material thickness:	0.5 - 1.2
---------------------	-----------

Contact opening:	With integral cable release
------------------	-----------------------------

Quantity of poles:	5
--------------------	---

Pkg.:	500
-------	-----