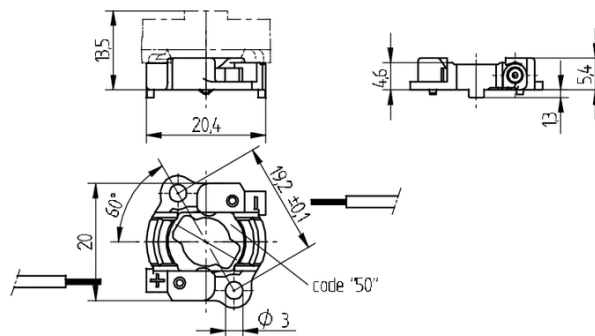


Connector for STARboards

47.313.5001.80



0,25 - 0,5 mm²



0,5 mm²



Connector for STARboards

47.313.5001.80



DESCRIPTION

For use with holder for optical systems 47.313.-3xx
Screw mounting: for screws M3 and locking washer
Max. torque for screw fixing 0.5 Nm*
Strip length: 6+1 mm
Test ports
Polarity of LED must be observed
Specifications of LED manufacturer must be observed
VDE-Reg - no. D060
*Please note the max torque of the COB manufacturer

| | |
|--------------------------|---|
| Packaging quantity: | 250.000 |
| Product name: | Connector for STARboards |
| Packaging type: | Bag |
| Country of origin: | DE |
| Mounting method 1: | Screw mount |
| Prefixation of COB: | No |
| Material: | Housing: PBT Contacts: CuSn |
| LED manufacturer: | Seoul Semiconductor |
| LED Typ: | Z-Power P4 (Starboard) |
| Conductor cross-section: | 0.5 mm ² |
| Approval: | cURus |
| cULus file no.: | E-345385 |
| cURus file no.: | E-336385 |
| Suitable for: | With centring for LED Z-Power P4 from Seoul Semiconductor |
| Color: | black |
| Weight: | 1 |
| Pkg.: | 250 |

Suitable for the following LED models:

| LED Manufacturer | LED Type | More Information |
|---------------------|------------------------|---|
| Seoul Semiconductor | Z-Power P4 (Starboard) | http://www.seoulsemicon.com |