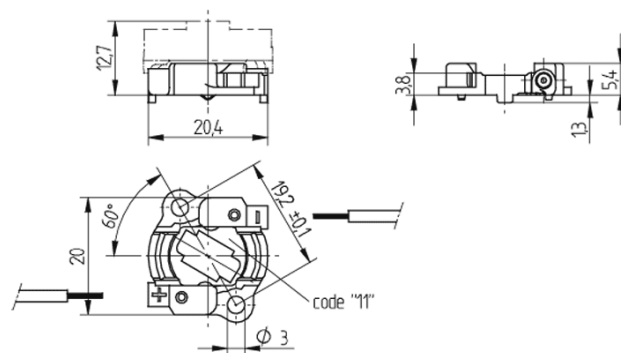


Connector for STARboards

47.313.1101.80



0,25 - 0,5 mm²



0,5 mm²



Connector for STARboards

47.313.1101.80



DESCRIPTION

For use with holder for optical systems 47.313.-3xx
Screw mounting: for screws M3 and locking washer
Max. torque for screw fixing 0.5 Nm*
Strip length: 6+1 mm
Test ports
Polarity of LED must be observed
Specifications of LED manufacturer must be observed
VDE-Reg - no. D060
*Please note the max torque of the COB manufacturer

Product name:	Connector for STARboards
Country of origin:	DE
Packaging quantity:	250.000
Packaging type:	Tray
Mounting method 1:	Screw mount
Prefixation of COB:	No
Material:	Housing: PBT Contacts: CuSn
LED manufacturer:	OSRAM Opto Semiconductors
LED Typ:	DRAGON-X 120° (Starboard)
Conductor cross-section:	0.5 mm ²
Approval:	cURus
cULus file no.:	E-345385
Suitable for:	With centring for LED DRAGON-X 120° from OSRAM
Color:	black
Weight:	1
Pkg.:	250

Suitable for the following LED models:

LED Manufacturer	LED Type	More Information
OSRAM Opto Semiconductors	DRAGON-X 120° (Starboard)	http://www.osram-os.com