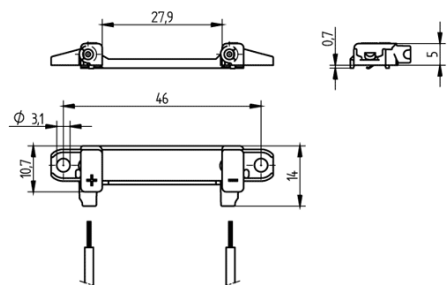


# Connector for COBs

## 47.315.1401.50



0,25 - 0,5 mm<sup>2</sup>



0,5 mm<sup>2</sup>

# Connector for COBs

## 47.315.1401.50



### DESCRIPTION

Screw mounting: for screws M3 and locking washer  
Max. torque for screw fixing 0.5 Nm\*  
Strip length: 6+1 mm  
Polarity of LED must be observed  
Specifications of LED manufacturer must be observed  
VDE-Reg. No. D971  
\*Please note the max torque of the COB manufacturer

Product name:	Connector for COBs
Mounting method 1:	Screw mount
Prefixation of COB:	No
Material:	Housing: PBT Contacts: CuSn
LED manufacturer:	Citizen
LED Typ:	CLL104
Conductor cross-section:	0.5 mm <sup>2</sup>
Approval:	cURus
cULus file no.:	E-345385
Suitable for:	CL-L104 from Citizen
Rating:	Rating: 3A / 150 VDC
Color:	white
Weight:	1
Pkg.:	195

### Suitable for the following LED models:

LED Manufacturer	LED Type	More Information
Citizen	CLL104	<a href="http://ce.citizen.co.jp">http://ce.citizen.co.jp</a>