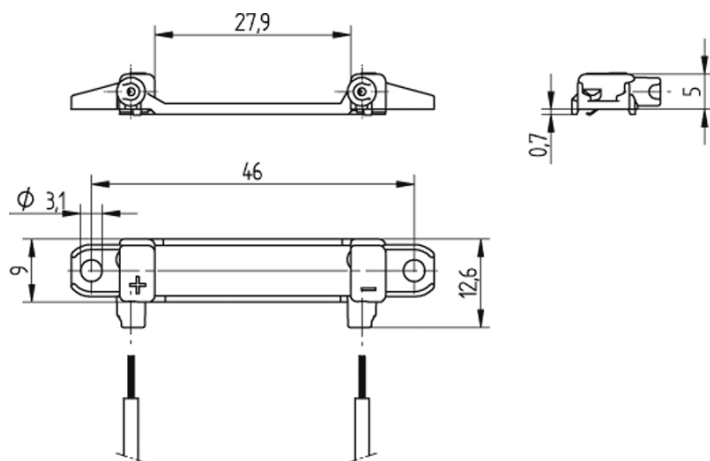


Connector for COBs

47.315.1002.50



0,25 - 0,5 mm²



0,5 mm²

Connector for COBs

47.315.1002.50



DESCRIPTION

Screw mounting: for screws M3 and locking washer
Max. torque for screw fixing 0.5 Nm*
Strip length: 6+1 mm
Polarity of LED must be observed
Specifications of LED manufacturer must be observed
VDE-Reg. No. D971
*Please note the max torque of the COB manufacturer

Product name:	Connector for COBs
Mounting method 1:	Screw mount
Prefixation of COB:	No
Material:	Housing: PBT Contacts: CuSn
LED manufacturer:	Citizen
LED Typ:	CLL102 / 103
Conductor cross-section:	0.5 mm ²
Approval:	cURus
cULus file no.:	E-345385
Suitable for:	CL-L103 and CL-L102 from Citizen
Rating:	Rating: 3A / 150 VDC
Color:	white
Weight:	1
Pkg.:	225

Suitable for the following LED models:

LED Manufacturer	LED Type	More Information
Citizen	CLL102 / 103	http://ce.citizen.co.jp