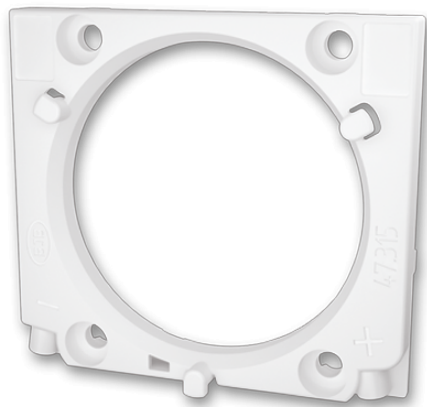


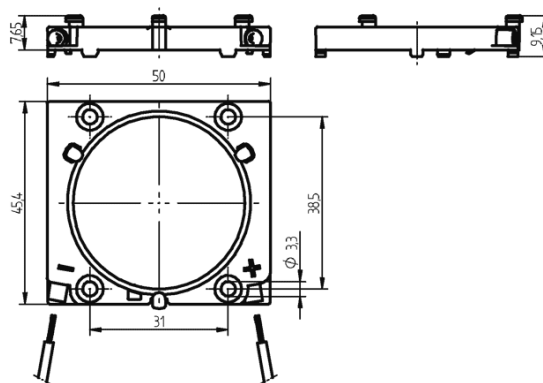
Connector for COBs
47.315.2111.50



0,25 - 0,5 mm²



0,5 mm²



Connector for COBs

47.315.2111.50



DESCRIPTION

Screw mounting: for screws M3 and locking washer
Max. torque for screw fixing 0.5 Nm*
Strip length: 6+1 mm
Polarity of LED must be observed
Specifications of LED manufacturer must be observed
VDE-Reg. No. D971
*Please note the max torque of the COB manufacturer

| | |
|--------------------------|-----------------------------|
| Product name: | Connector for COBs |
| Mounting method 1: | Screw mount |
| Prefixation of COB: | No |
| Material: | Housing: PBT Contacts: CuSn |
| LED manufacturer: | Bridgelux |
| LED Typ: | RS (COB) |
| Conductor cross-section: | 0.5 mm ² |
| Approval: | cURus |
| cULus file no.: | E-345385 |
| Suitable for: | RS-series from Bridgelux |
| Rating: | Rating: 3A / 150 VDC |
| Weight: | 6 |
| Pkg.: | 360 |

Suitable for the following LED models:

| LED Manufacturer | LED Type | More Information |
|------------------|----------|---|
| Bridgelux | RS (COB) | http://www.bridgelux.com |