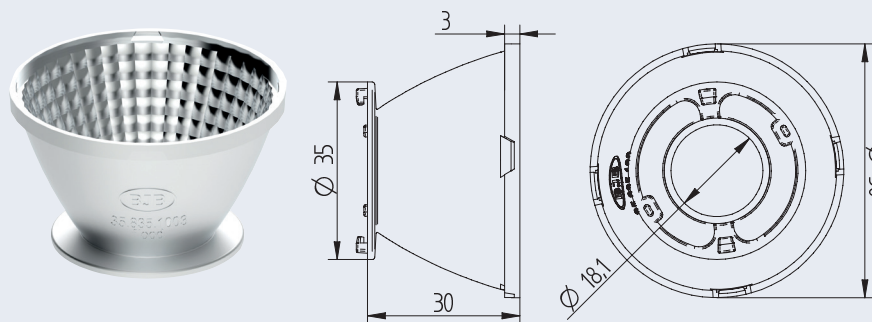


# OptiSpot Reflector Ø 50 mm - Flood

35.835 · OptiSpot Reflector for use with connectors 47.360 Ø 35 mm



pkg.	wt.	part no.
49	7.4 g	<b>35.835.1003.50</b>

## OptiSpot Reflector Ø 50 mm - Flood

Bayonet fixing (Twist & Lock action) into connector

Material: PC, Aluminium coated

Light distribution: Flood

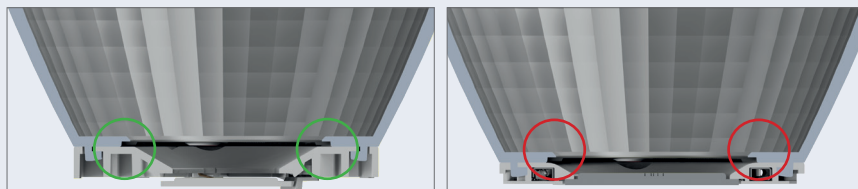
Reflector is optimized for use with connectors **47.360.1020** and **47.360.1030.50** with a diameter of 35 mm.\*

- Reflector interface is adapted to the mixing cone of the connector
- Possibly visually disruptive openings of the connector are covered

We recommend the use of COB's with LES < 12 mm.

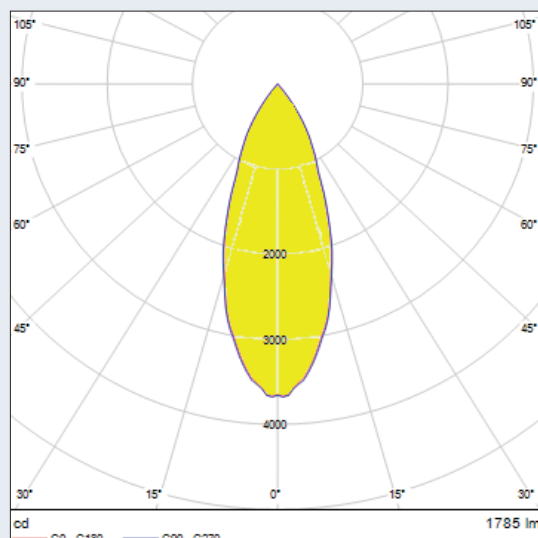
Please do not touch the reflector inside with bare fingers.

\* The reflector can also be combined with other connectors  
Please contact us for more information.



It should be noted that the upper cone diameter of the mixing chamber of the connector must be smaller than the opening diameter of the reflector (here Ø 18.1 mm), so that an undercut is avoided (picture on the right).

100°C CAD



Beam angle measured with COB Citizen CLU02J and connector **47.360.1020.50**.

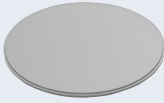
Beam angle (FWHM): 39°  
Efficiency: 86%

Beam angle depends on the COB used.

Accessories:



Cover plate  
**35.908.1004.85**



Diffusor plate  
**35.908.1004.89**



Diffusor lens  
**35.908.1008.89**



Connector Ø 35 mm

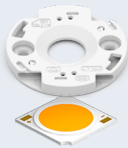
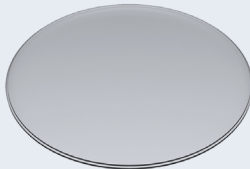
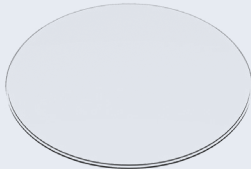
Effect on the beam angle and the efficiency of the reflector when combined with a cover plate, diffusor plate or diffusor lens (measured with COB Citizen CLU02J and connector **47.360.1020.50**). The values are for reference only.

Beam angle (FWHM) reflector <b>35.835.1003.56</b>	Efficiency reflector <b>35.835.1003.56</b>	Beam angle with cover plate <b>35.908.1004.85</b>	Efficiency with cover plate <b>35.908.1004.85</b>
39°	86%	39°	82%
		Beam angle with diffusor plate <b>35.908.1004.89</b>	Efficiency with diffusor plate <b>35.908.1004.89</b>
		39°	82%
		Beam angle with diffusor lens <b>35.908.1008.89</b>	Efficiency with diffusor lens <b>35.908.1008.89</b>
		44°	83%

Modular system



Abdeck- oder Diffusorscheibe



# Mouser Electronics

Authorized Distributor

Click to View Pricing, Inventory, Delivery & Lifecycle Information:

[BJB Electric:](#)

[35.835.1003-001-03](#)