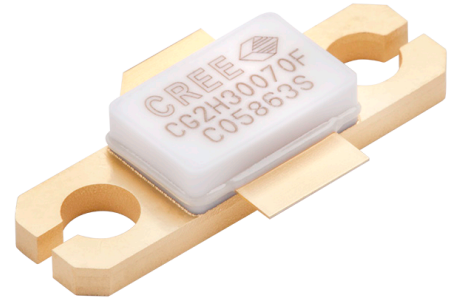


# CG2H30070F

70 W, DC - 4.0 GHz, 28 V, RF Power GaN HEMT

## Description

Cree's CG2H30070F is an internally matched gallium nitride (GaN) high electron mobility transistor (HEMT). The CG2H30070F, operating from a 28 volt rail, offers a general purpose, broadband solution to a variety of RF and microwave applications. GaN HEMTs offer high efficiency, high gain and wide bandwidth capabilities making the CG2H30070F ideal for linear and compressed amplifier circuits. The transistor is available in a flange package.



Package Type: 440224  
PN: CG2H30070F

## Typical Performance Over 0.5 - 3.0 GHz ( $T_c = 25^\circ\text{C}$ )

Parameter	500 MHz	1000 MHz	1500 MHz	2000 MHz	2500 MHz	3000 MHz	Units
Small Signal Gain (S21)	16.7	15.3	17.3	15	16.3	14.8	dB
Gain @ $P_{IN} = 39\text{ dBm}$	10.3	10.4	10.6	9.8	11.4	10.5	dB
Output Power @ $P_{IN} = 39\text{ dBm}$	85	88	90	76	109	89	W
Efficiency @ $P_{IN} = 39\text{ dBm}$	63	57.5	55.6	63.4	62.1	59.8	%

Note: Operating conditions are CW

### Features

- 0.5 - 3.0 GHz Application Circuit
- 85 W  $P_{OUT}$  typical at 28 V
- 10 dB Power Gain
- 58% Drain Efficiency
- Internally Matched

### Applications

- Broadband Amplifiers
- Electronic Counter Measures
- Signal Jamming
- Milcom
- Radar
- Data Link



Large Signal Models Available for ADS and MWO

**Absolute Maximum Ratings (not simultaneous) at 25 °C Case Temperature**

Parameter	Symbol	Rating	Units	Conditions
Drain-Source Voltage	$V_{DS}$	120	Volts	25 °C
Gate-to-Source Voltage	$V_{GS}$	-10, +2	Volts	25 °C
Storage Temperature	$T_{STG}$	-65, +150	°C	
Operating Junction Temperature	$T_J$	225	°C	
Maximum Forward Gate Current	$I_{GMAX}$	28.8	mA	25 °C
Maximum Drain Current <sup>1</sup>	$I_{DMAX}$	12	A	25 °C
Soldering Temperature <sup>2</sup>	$T_S$	245	°C	
Screw Torque	$\tau$	40	in-oz	
Thermal Resistance, Junction to Case <sup>3</sup>	$R_{\theta JC}$	1.5	°C/W	85 °C, CW, $P_{DISS} = 115$ W
Case Operating Temperature <sup>2</sup>	$T_C$	-40, +150	°C	

Notes:

<sup>1</sup> Current limit for long term, reliable operation<sup>2</sup> Refer to the Application Note on soldering at [wolfspeed.com/RF/Document-Library](http://wolfspeed.com/RF/Document-Library)<sup>3</sup> See also, the Power Dissipation De-rating Curve on Page 8**Electrical Characteristics ( $T_C = 25^\circ\text{C}$ )**

Characteristics	Symbol	Min.	Typ.	Max.	Units	Conditions
<b>DC Characteristics<sup>1</sup></b>						
Gate Threshold Voltage	$V_{GS(th)}$	-3.8	-2.8	-2.3	V <sub>DC</sub>	$V_{DS} = 10$ V, $I_D = 28.8$ mA
Saturated Drain Current <sup>2</sup>	$I_{DS}$	20.7	28.8	–	A	$V_{DS} = 6.0$ V, $V_{GS} = 2.0$ V
Drain-Source Breakdown Voltage	$V_{BR}$	84	–	–	V <sub>DC</sub>	$V_{GS} = -8$ V, $I_D = 28.8$ mA
<b>RF Characteristics<sup>3</sup> (<math>T_C = 25^\circ\text{C}</math>, <math>F_0 = 3000</math> MHz unless otherwise noted)</b>						
Small Signal Gain	$G_{SS}$	15.6	17.7	–	dB	$V_{DD} = 28$ V, $I_{DQ} = 1.0$ A, $P_{IN} = 10$ dBm, CW
Power Gain	$G_P$	–	12	–	dB	$V_{DD} = 28$ V, $I_{DQ} = 1.0$ A, $P_{IN} = 38$ dBm, CW
Output Power	$P_{OUT}$	48.25	50	–	dBm	$V_{DD} = 28$ V, $I_{DQ} = 1.0$ A, $P_{IN} = 38$ dBm, CW
Drain Efficiency <sup>4</sup>	$\eta$	61	71	–		$V_{DD} = 28$ V, $I_{DQ} = 1.0$ A, $P_{IN} = 38$ dBm, CW
Output Mismatch Stress	VSWR	–	–	5 : 1	$\Psi$	No damage at all phase angles, $V_{DD} = 28$ V, $I_{DQ} = 1.0$ A, $P_{OUT} = 100$ W CW
<b>Dynamic Characteristics</b>						
Input Capacitance	$C_{GS}$	–	68.1	–	pF	$V_{DS} = 28$ V, $V_{GS} = -8$ V, $f = 1$ MHz
Output Capacitance	$C_{DS}$	–	11.3	–	pF	$V_{DS} = 28$ V, $V_{GS} = -8$ V, $f = 1$ MHz
Feedback Capacitance	$C_{GD}$	–	1.49	–	pF	$V_{DS} = 28$ V, $V_{GS} = -8$ V, $f = 1$ MHz

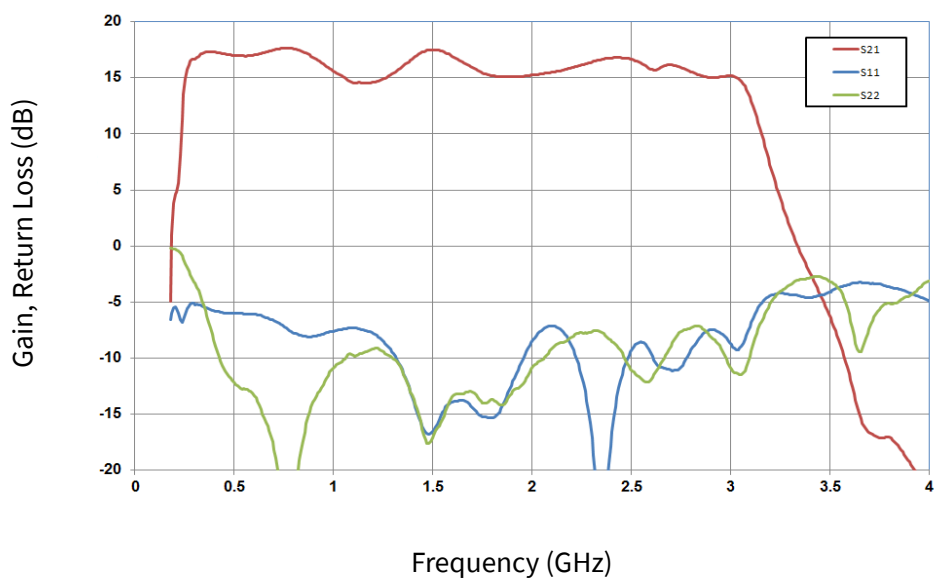
Notes:

<sup>1</sup> Measured on wafer prior to packaging per side of device<sup>2</sup> Scaled from PCM data<sup>3</sup> Measurements are to be performed using Cree production test fixture AD-838279F-TB (Flange)<sup>4</sup> Drain Efficiency =  $P_{OUT} / P_{DC}$

## CG2H30070F Typical Performance

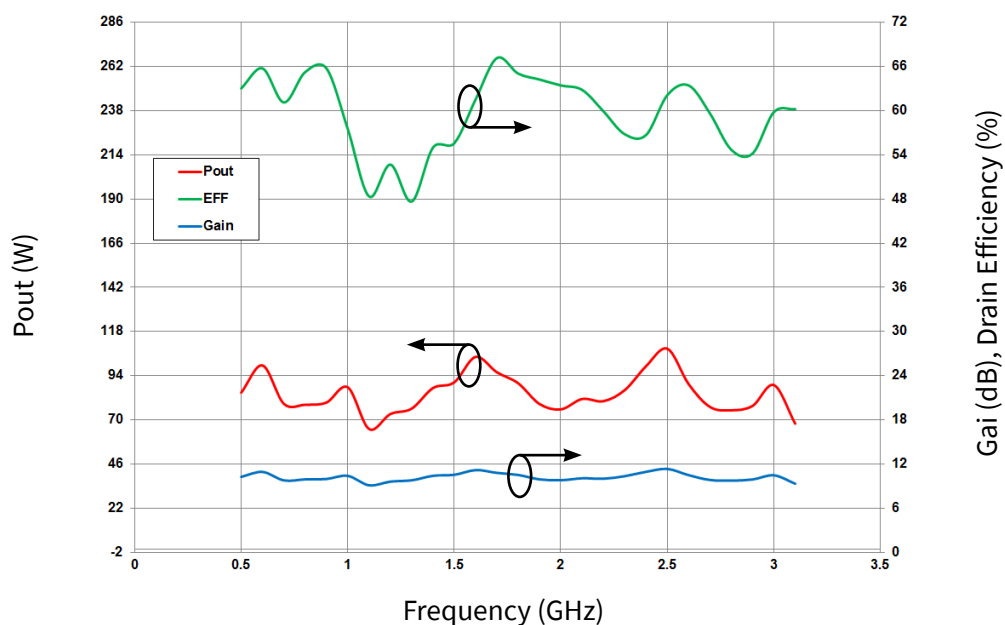
**Figure 1 - Small Signal Gain and Return Losses of the CG2H30070F vs Frequency as Measured in the Single-ended Demonstration Amplifier CG2H30070F-AMP**

$V_{DD} = 28 \text{ V}$ ,  $I_{DQ} = 1.0 \text{ A}$



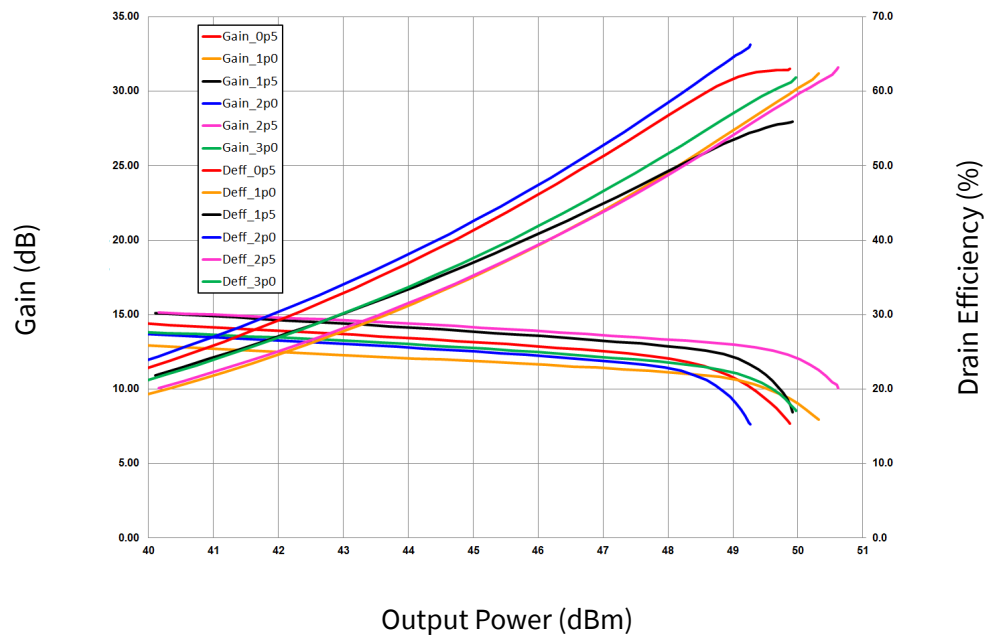
**Figure 2 - Output Power and Efficiency of the CG2H30070F vs. Frequency as Measured in the Single-ended Demonstration Amplifier CG2H30070F-AMP**

CW Operation,  $V_{DD} = 28 \text{ V}$ ,  $I_{DQ} = 1.0 \text{ A}$ ,  $P_{IN} = 39 \text{ dBm}$

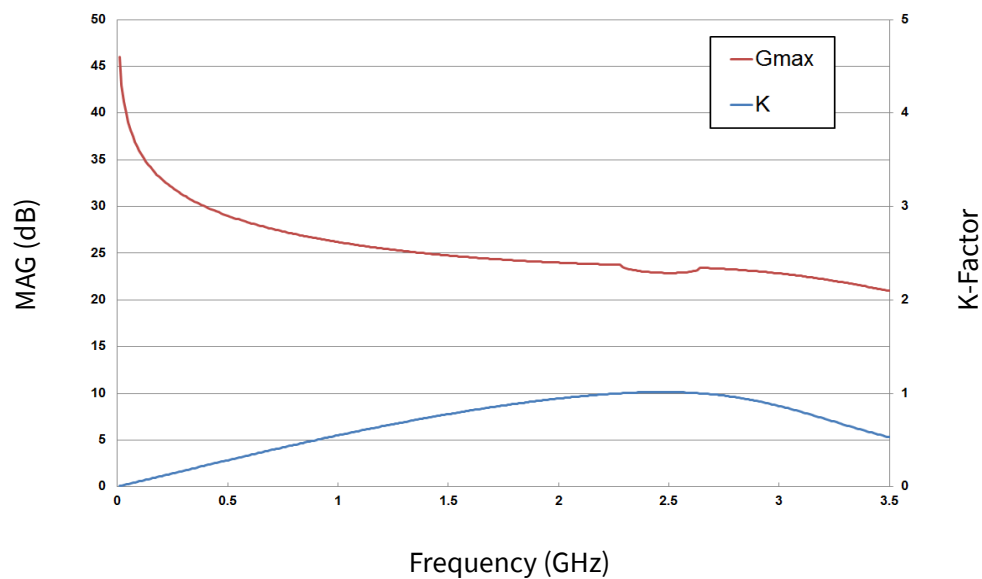


**CG2H30070F Typical Performance**

**Figure 3 - Gain and Drain Efficiency vs. Output Power at Various Frequencies as Measured in the Single-ended Demonstration Amplifier CG2H30070F-AMP**  
CW-Operation,  $V_{DD} = 28\text{ V}$ ,  $I_{DQ} = 1.0\text{ A}$

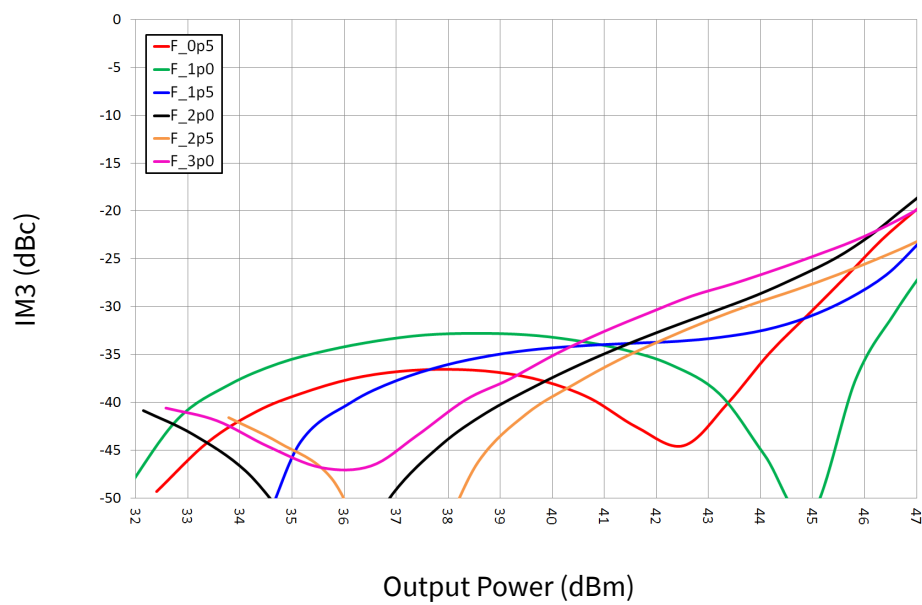


**Figure 4 - Simulated Maximum Available Gain and K-factor of the CG2H30070F**  
 $V_{DD} = 28\text{ V}$ ,  $I_{DQ} = 1.0\text{ A}$

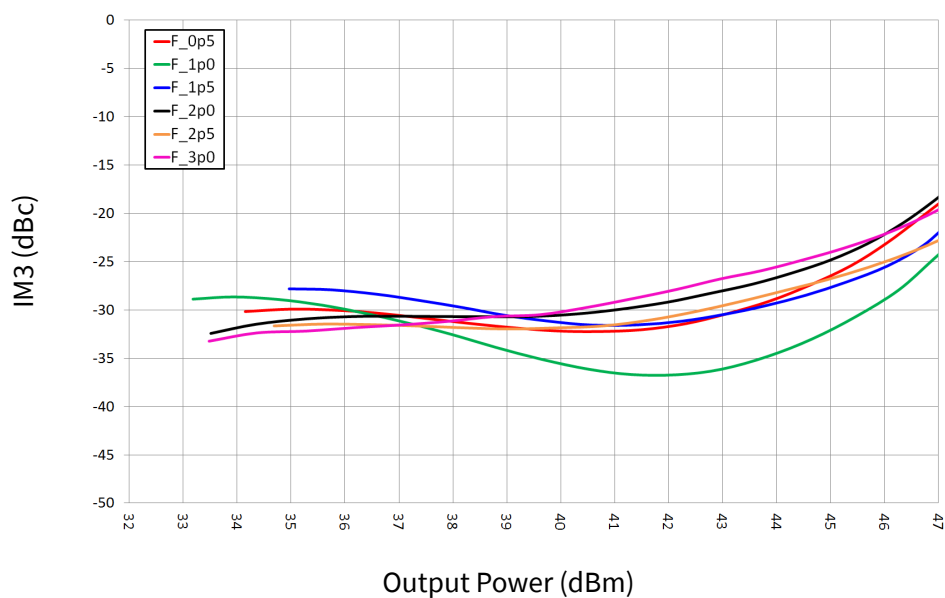


**CG2H30070F Typical Performance**

**Figure 5 - IM3 vs. Output Power of the CG2H30070F  
as Measured in the Single-ended Demonstration Amplifier CG2H30070F-AMP  
 $I_{DQ} = 300$  mA, Temperature = 25°C**



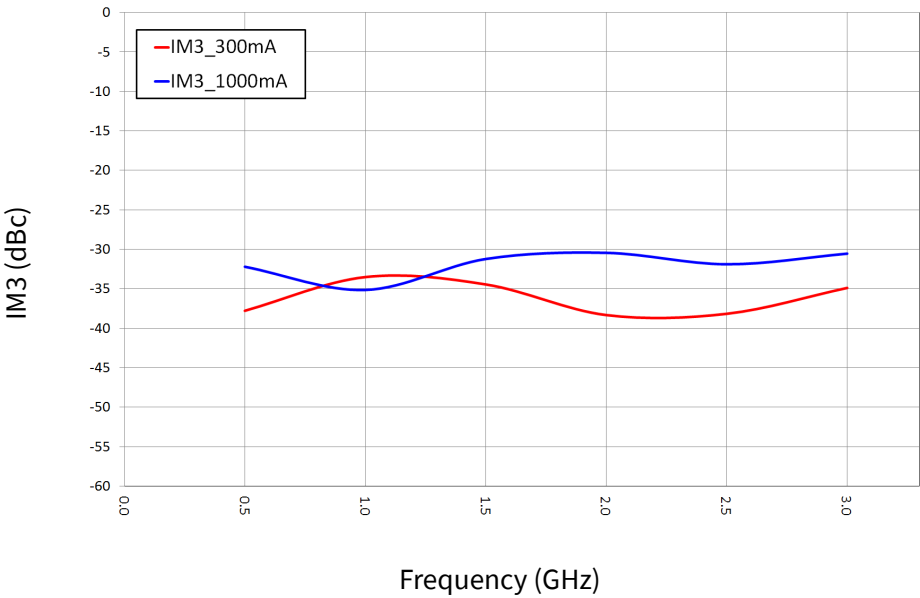
**Figure 6 - IM3 vs. Output Power of the CG2H30070F  
as Measured in the Single-ended Demonstration Amplifier CG2H30070F-AMP  
 $I_{DQ} = 1000$  mA, Temperature = 25°C**





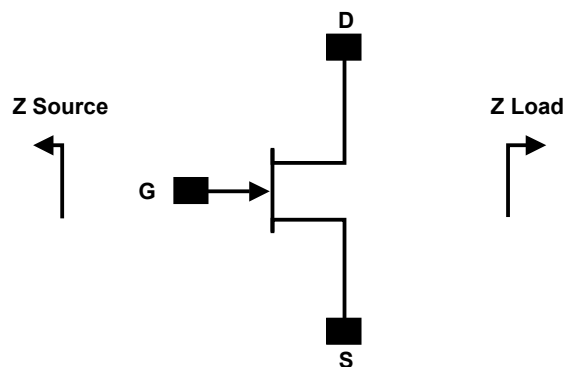
CG2H30070F Typical Performance

**Figure 7 - IM3 vs. Frequency of the CG2H30070F  
as Measured in the Single-ended Demonstration Amplifier CG2H30070F-AMP  
 $P_{OUT} = 40\text{ dBm}$ , Temperature = 25°C**





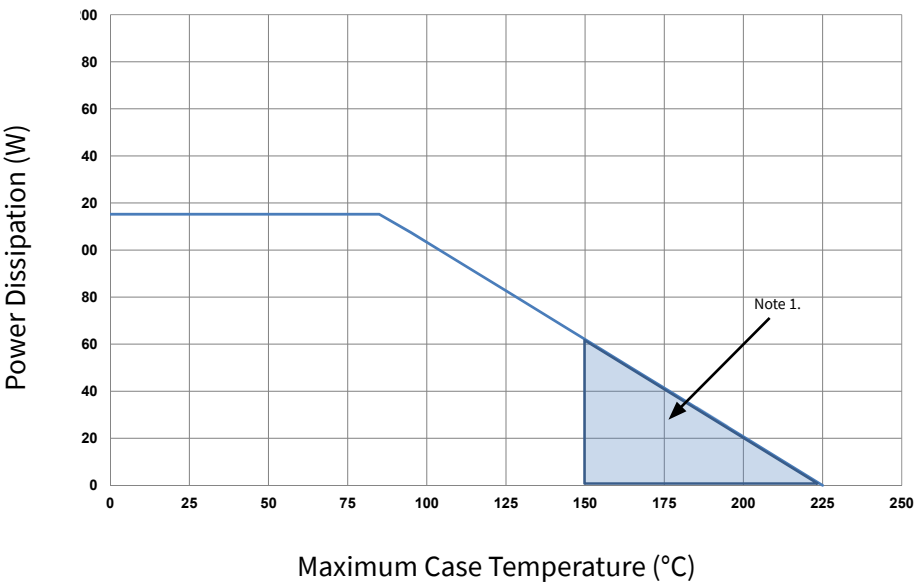
Simulated Source and Load Impedances



Frequency (MHz)	Z Source	Z Load
500	9 - j5.15	5.79 - j2.56
1000	7.45 - j3.82	4.76 - j1.35
1500	1.7 - j3.24	3.55 + j0.8
2000	2.33 - j0.06	4.19 + j0.19
2500	4.57 - j2.15	4.34 - j1.73
3000	1.07 - j1.04	2.65 - j1.57

Note 1.  $V_{DD} = 28\text{ V}$ ,  $I_{DQ} = 1.0\text{ A}$  in the 440224 package  
Note 2. Optimized for power gain,  $P_{SAT}$  and Drain Efficiency  
Note 3. When using this device at low frequency, series resistors should be used to maintain amplifier stability

CG2H30070F Power Dissipation De-rating Curve, CW

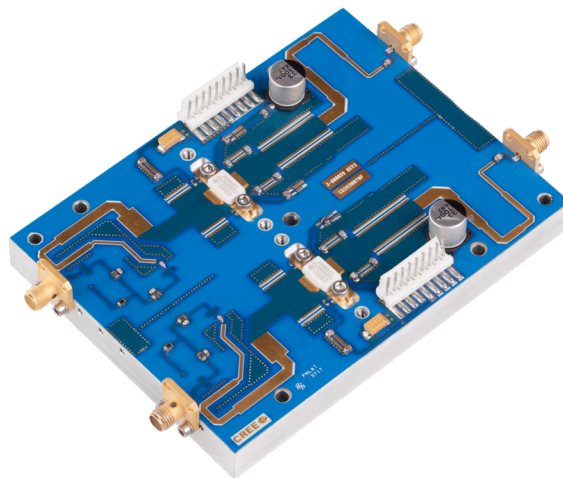


Note 1. Area exceeds Maximum Case Operating Temperature (See Page 2)

## Typical Combined Performance

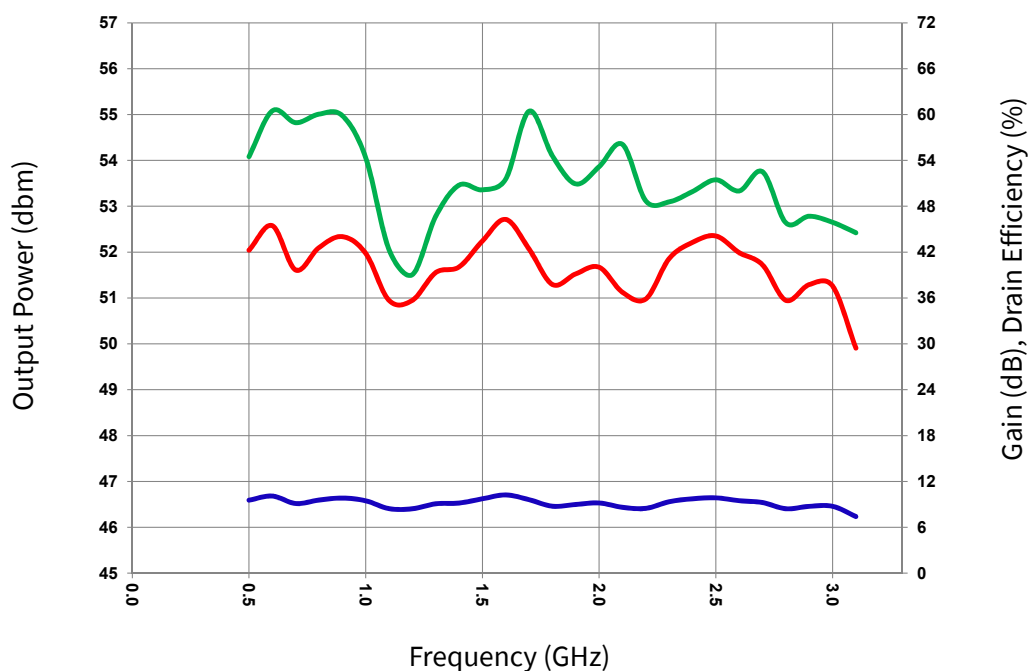
The previous plots were created from one side of the wideband application circuit, CG2H30070F-AMP2 in order to demonstrate the RF performance of the transistor over a wide frequency band. The application circuit CG2H30070FAMP2 is designed to combine two CG2H30070F in order to achieve 100W CW from 0.5-3.0 GHz instantaneously. Figure 7 shows the typical RF performance from CG2H30070F-AMP2.

To achieve this performance, couplers from Innovative Power Products were used. The IPP-2256 uses N-type connectors in order to handle the higher output power from this application circuit and lead to the reason for the spacing seen in the SMA connectors in the application amplifier CG2H30070F-AMP2.



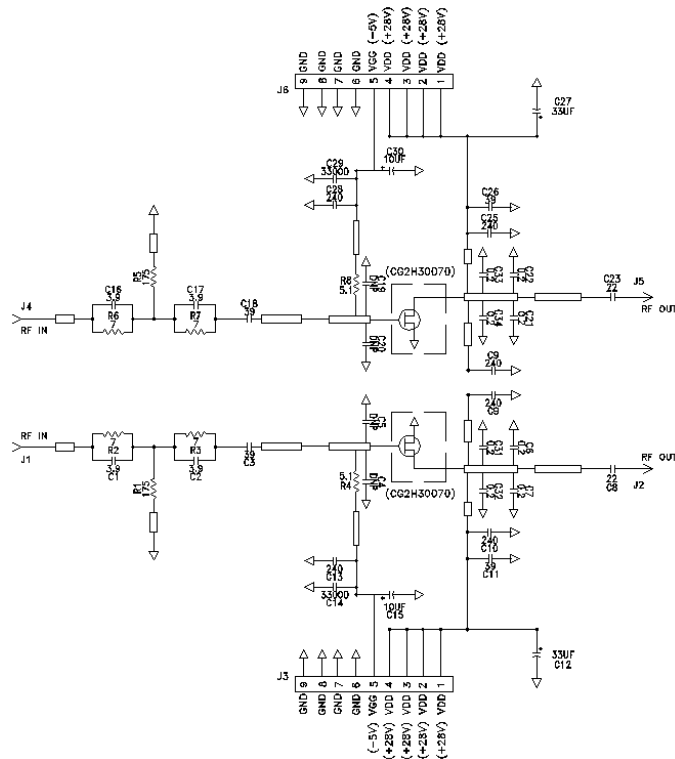
**Figure 7 - Output Power, Power Gain and Drain Efficiency vs. Frequency of Two CG2H30070F Combined as Measured in the Combined Demonstration Amplifier CG2H30070F-AMP2 with Couplers**

$V_{DD} = 28\text{ V}$ ,  $I_{DQ} = 2\text{ A}$ ,  $P_{IN} = 42.5\text{ dBm}$ , Temperature =  $25^{\circ}\text{C}$

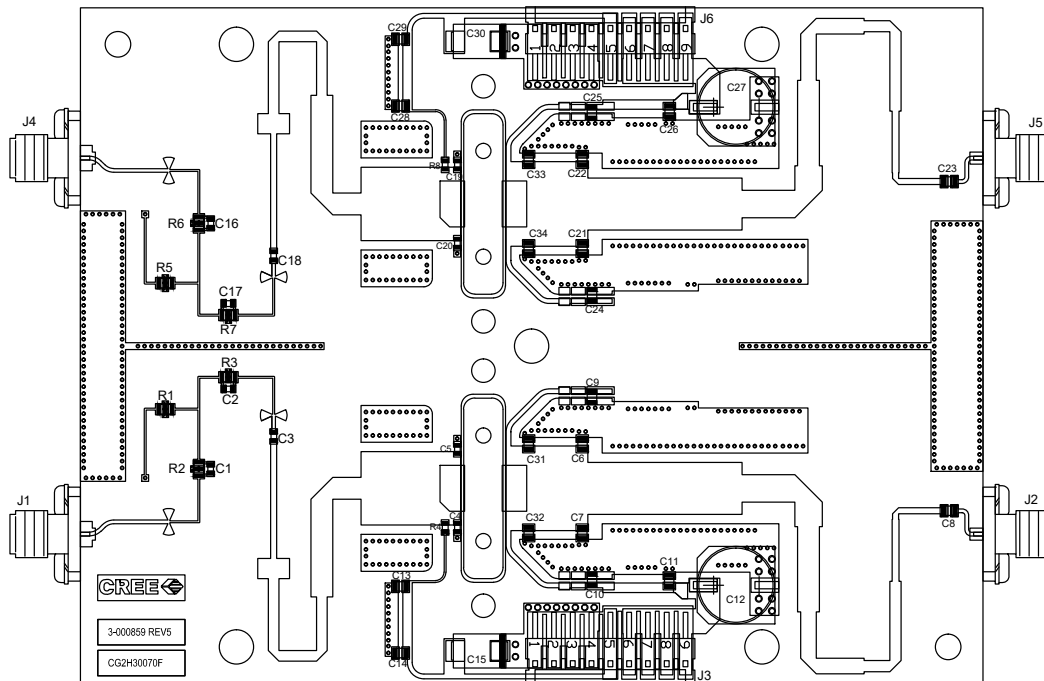




## CG2H30070F-AMP2 Demonstration Amplifier Circuit Schematic

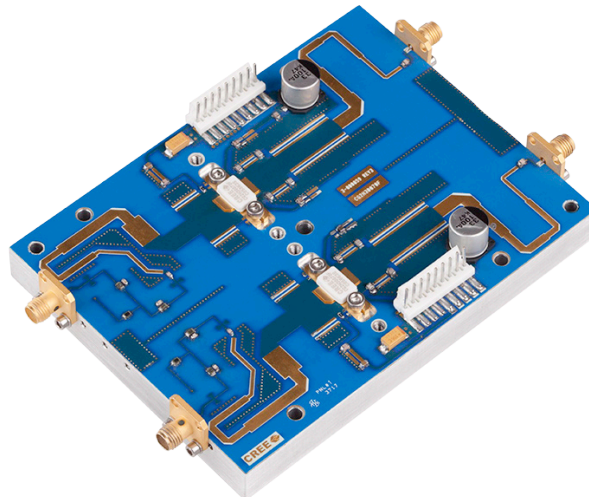


## CG2H30070F-AMP2 Demonstration Amplifier Circuit Outline

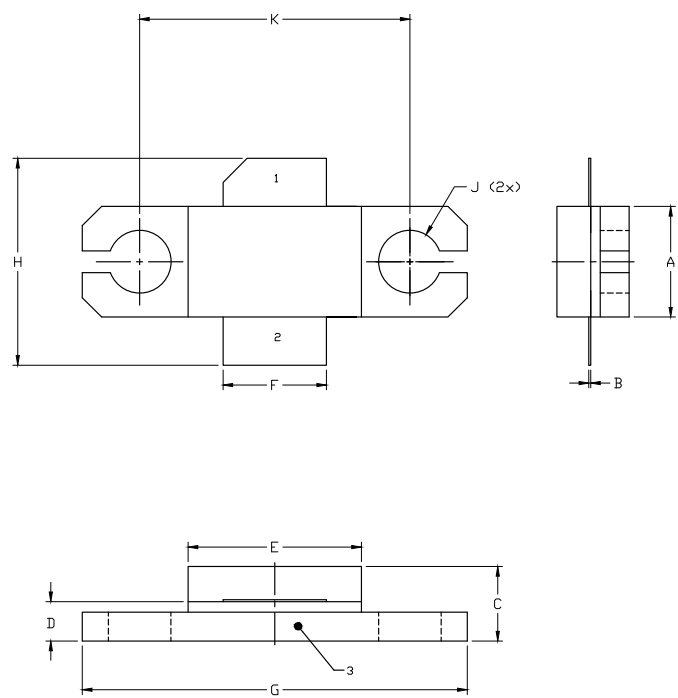


**CG2H30070F-AMP Demonstration Amplifier Circuit Bill of Materials**

Designator	Description	Qty
C11, C26	CAP, 39 pF, $\pm 5\%$ , 250V, 0805, ATC600F	2
C8, C23	CAP, 22 pF, $\pm 5\%$ , 250V, 0805, ATC600F	2
C3, C18	CAP, 39 pF, $\pm 5\%$ , 0603, ATC	2
C14, C29	CAP, 33000PF, 0805, 100V, X7R	2
C15, C30	CAP, 10UF, 16V TANTALUM	2
C13, C9, C10, C28, C24, C25	CAP, 240pF, $\pm 5\%$ , 250V, 0805, ATC600F	6
C6, C7, C31, C32, C21, C22, C33, C34	CAP, 0.2pF, $\pm 0.05\%$ pF, 250V, 0805, ATC600F	8
C4, C5, C19, C20	DO NOT PLACE	0
C1, C2, C16, C17	CAP, 3.9pF, $\pm 0.1$ pF, 0603, ATC	4
R2, R3, R6, R7	RES, 7 OHM, 0805, HIGH POWER SMT, IMS	4
R1, R5	RES, 175 OHM, 0805, HIGH POWER SMT, IMS	2
R4, R8	RES, 5 OHM, 0603, SMT	2
C12, C27	CAP, 33 UF, 20%, 100V, ELEC	2
J1, J2, J4, J5	CONN, SMA, PANEL MOUNT JACK, FLANGE, 4-HOLE, BLUNT POST, 20 MIL	4
J3, J6	HEADER RT>PLZ .1CEN LK 9POS	2
	PCB, RO6035HTC, 3.6"x4.8"x0.010", CG2H30070F	1
	BASEPLATE, AI, 4.8x3.6x0.5	

**CG2H30070F-AMP2 Demonstration Amplifier Circuit**

Product Dimensions CG2H30070F (Package Type — 440224)



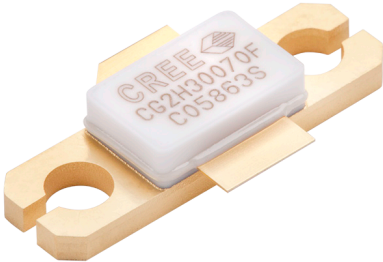
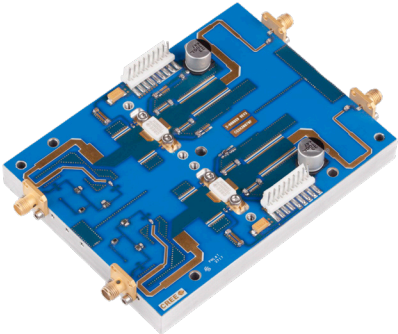
- NOTES:
- 1. DIMENSIONING AND TOLERANCING PER ANSI Y14.5M, 1982.
  - 2. CONTROLLING DIMENSION: INCH.
  - 3. ADHESIVE FROM LID MAY EXTEND A MAXIMUM OF 0.020" BEYOND EDGE OF LID.
  - 4. LID MAY BE MISALIGNED TO THE BODY OF THE PACKAGE BY A MAXIMUM OF 0.008" IN ANY DIRECTION.
  - 5. ALL PLATED SURFACES ARE NI/AU.

DIM	INCHES		MILLIMETERS	
	MIN	MAX	MIN	MAX
A	0.225	0.235	5.72	5.97
B	0.004	0.006	0.10	0.15
C	0.145	0.165	3.68	4.19
D	0.077	0.087	1.96	2.21
E	0.355	0.365	9.02	9.27
F	0.210	0.220	5.33	5.59
G	0.795	0.805	20.19	20.45
H	0.400	0.460	10.16	11.68
J	Ø .130		3.30	
k	0.562		14.27	

PIN 1. GATE  
PIN 2. DRAIN  
PIN 3. SOURCE



Product Ordering Information

Order Number	Description	Unit of Measure	Image
CG2H30070F	GaN HEMT	Each	
CG2H30070F-AMP2	Test board with GaN HEMT installed	Each	

For more information, please contact:

4600 Silicon Drive  
Durham, North Carolina, USA 27703  
[www.wolfspeed.com/RF](http://www.wolfspeed.com/RF)

Sales Contact  
RFSales@cree.com

## Notes

---

### Disclaimer

Specifications are subject to change without notice. “Typical” parameters are the average values expected by Cree in large quantities and are provided for information purposes only. Cree products are not warranted or authorized for use as critical components in medical, life-saving, or life-sustaining applications, or other applications where a failure would reasonably be expected to cause severe personal injury or death. No responsibility is assumed by Cree for any infringement of patents or other rights of third parties which may result from use of the information contained herein. No license is granted by implication or otherwise under any patent or patent rights of Cree.

# Mouser Electronics

Authorized Distributor

Click to View Pricing, Inventory, Delivery & Lifecycle Information:

Wolfspeed:

[CG2H30070F-TB2](#)