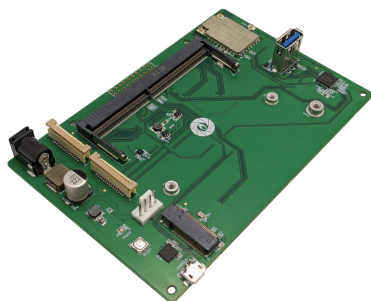




Gumstix Jetson Nano MegaDrive Product datasheet



Product Features

Camera	
Camera Connector	Vertical cable orientation connector for Raspberry Pi Camera.
General	
GPU	128-core NVIDIA Maxwell™ architecture-based GPU
M.2 Compatible	Compatible with the M.2 PCI-SIG standard.
Processor	
Processor	Quad-core ARM® A57
Memory	
RAM	4 GB 64-bit LPDDR4
Usb	
USB Device	Micro B USB Plug

- Learn more about Geppetto

Product links

- [Geppetto®Workspace](#)

PKG900000001198

USD100.00

The Gumstix Jetson Nano MegaDrive, powered by the NVIDIA Jetson Nano running a Quad-core ARM A57, brings out most of the frequently used interfaces, such as:

- HDMI
- USB 3.0
- 2 x Raspberry Pi Vertical Camera Connector
- M.2 (Key M) SSD card interface
- 802.11 ac WiFi
- USB Micro-B Jack for flashing
- USB Micro-B Jack for console debugging

The Gumstix Jetson Nano Development Board is the perfect starting point for your edge AI project.

Important

The Gumstix Jetson Nano products are designed around version B01 of the NVIDIA Jetson Nano module. Many of the NVIDIA Jetson Nano modules included in the NVIDIA Jetson Nano Developer Kit are earlier versions (i.e. A02) of the module and are therefore incompatible with Gumstix products. To ensure proper functionality, PLEASE SOURCE VERSIONS B01 OR NEWER OF THE NVIDIA JETSON NANO MODULE.

Customize Your Board

Customize the GUMSTIX JETSON NANO DEVELOPMENT BOARD to your project's specific needs in Geppetto D2O. Add features or remove unused components with the ease of a drag-and-drop interface.

- Clone and customize your own Nano expansion board
- Explore and create a customized expansion board from scratch



Mouser Electronics

Authorized Distributor

Click to View Pricing, Inventory, Delivery & Lifecycle Information:

Gumstix:

PKG900000001198