

EK-2450-SR Test Antenna

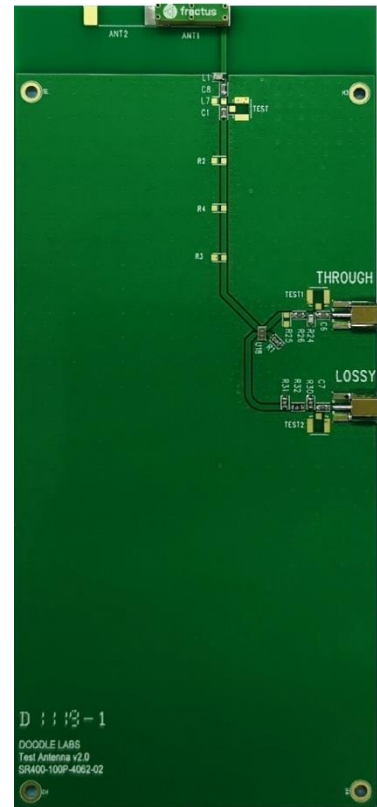
Overview

The Doodle Labs EK-2450-SR Test Antenna is designed to simplify bench testing of Doodle Labs RM-2450-2H series Smart Radios. The main radiating element is a Fractus FR01-S4-224 SMT antenna which has been tuned to provide a 50-ohm match in the 2400-2483.5 MHz ISM Band. Detailed technical information can be found on the manufacturer’s webpage.

The EK-2450-SR Test Antenna includes two ports, only one of which should be connected at a time. The THROUGH port is for short range measurements and the LOSSY port is for bench measurements, for example for in-lab testing.

Technical Specifications

Frequency Range	2400-2483.5 MHz
Radiating Element Peak Gain	2.6 dBi
THROUGH board loss	1 dB
LOSSY board loss	14 dB
Impedance	50-ohm
VSWR (both ports)	< -14 dB typical
Dimensions	131mm x 60mm x 4mm



Mouser Electronics

Authorized Distributor

Click to View Pricing, Inventory, Delivery & Lifecycle Information:

[Doodle Labs:](#)

[EK-2450-SR](#)