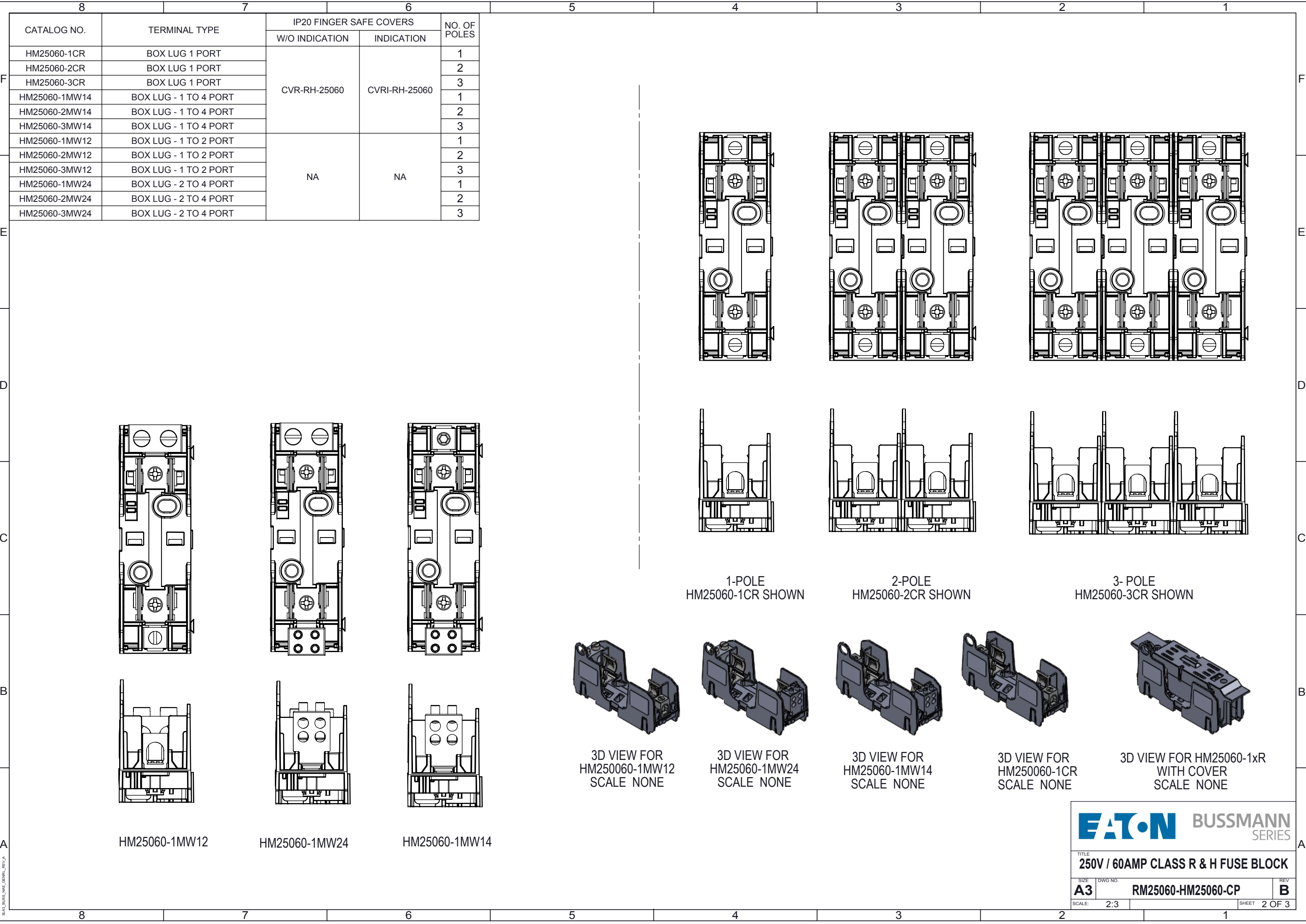
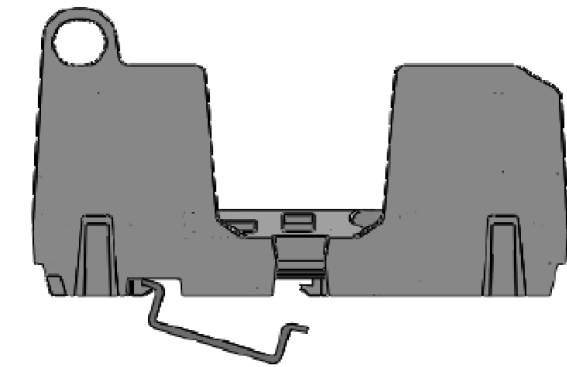
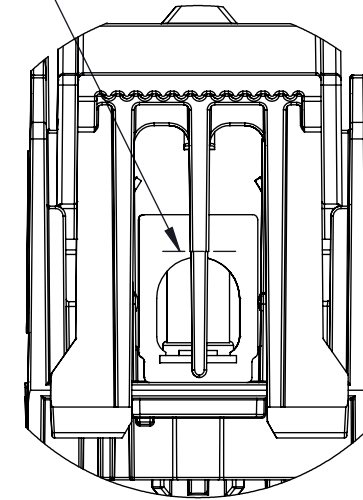


SLA3_BUSSMAN_GENRIL_REV_A

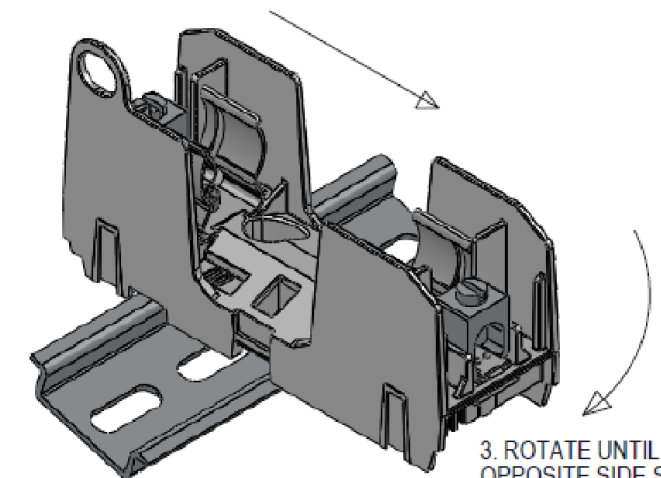


CUT COVER TAB
AT NOTCH FOR
USE WITH WIRES
LARGER THAN
8 AWG

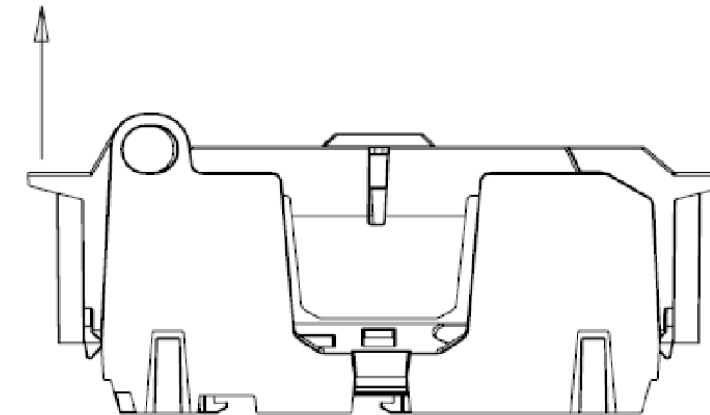
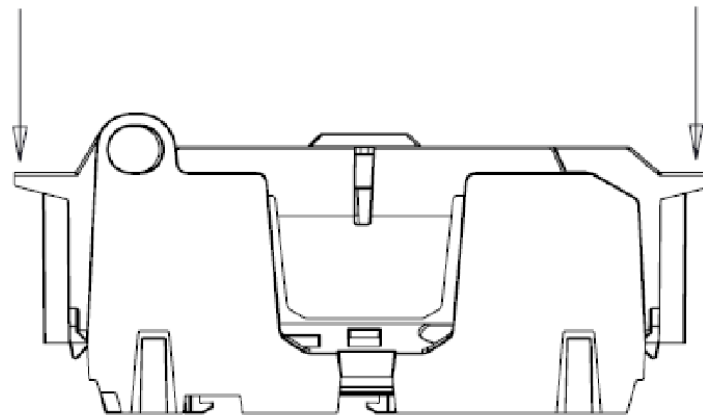
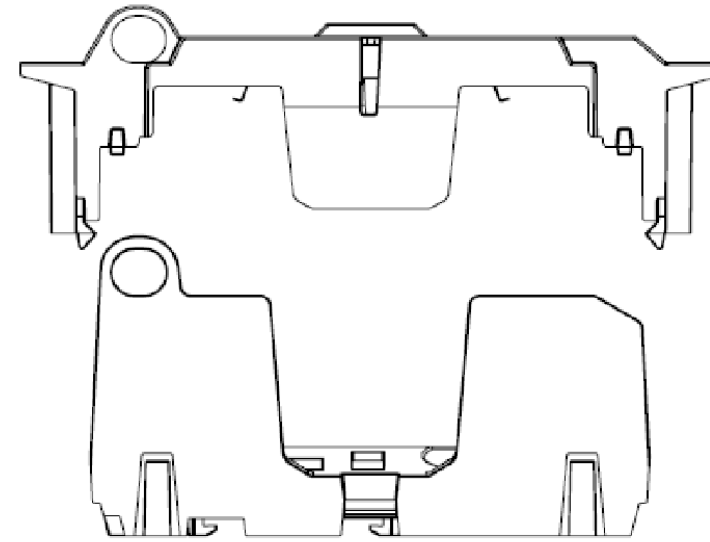
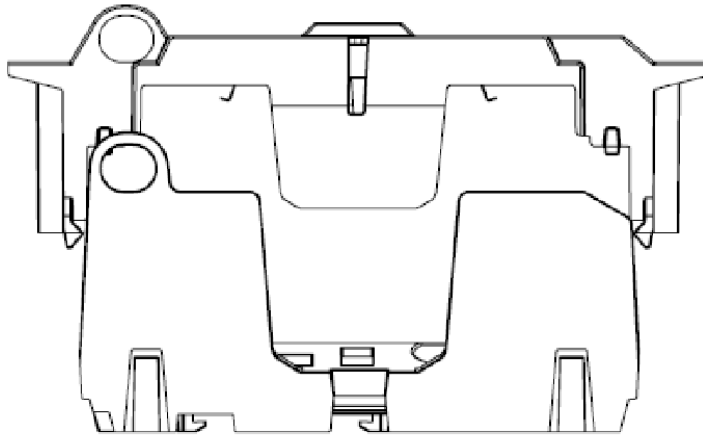


1. HOOK DIN RAIL SNAPS ON ONE SIDE OF THE DIN RAIL

2. PUSH DOWN TO DEFLECT THE SNAPS



3. ROTATE UNTIL THE
OPPOSITE SIDE SNAPS
ONTO DIN RAIL



CLOSING
PUSH STRAIGHT DOWN UNTIL SNAPS CLICK
INTO PLACE

OPENING
PULL STRAIGHT UP AT BOTH OUTSIDE
HANDLES

INSTALLATION ON DIN RAIL
END STOPS MAY BE NECESSARY FOR SOME
ASSEMBLY CONDITIONS - SEE NOTE 7

EAT•N BUSSMANN
SERIES

TITLE
250V / 60AMP CLASS R & H FUSE BLOCK

SIZE A3 DWG NO. RM25060-HM25060-CP REV B

SCALE: 2:3 SHEET 3 OF 3

Mouser Electronics

Authorized Distributor

Click to View Pricing, Inventory, Delivery & Lifecycle Information:

Eaton:

[RM25060-3CR](#) [RM25060-2MW24](#) [RM25060-2MW12](#) [RM25060-2MW14](#) [RM25060-3CHR](#) [RM25060-3MW24](#)
[RM25060-1MW24](#) [RM25060-3MW12](#) [RM25060-3MW14](#) [RM25060-1CR](#) [RM25060-2CHR](#) [RM25060-1CHR](#)
[RM25060-1MW14](#) [RM25060-2CR](#) [HM25060-1CR](#) [HM25060-2CR](#) [HM25060-3CR](#) [HM25060-3MW24](#) [HM25060-1CHR](#) [HM25060-1SCR](#) [HM25060-2SCR](#) [HM25060-3SCR](#) [HM25060-2CHR](#) [HM25060-2MW12](#) [HM25060-2MW14](#)
[HM25060-2MW24](#) [HM25060-3CHR](#) [HM25060-3MW12](#) [HM25060-3MW14](#) [HM25060-1MW14](#) [HM25060-1MW24](#)