

Mini Devices

Transorbs, Resistors, Diodes

22901 series

22902 Series

22903 Series

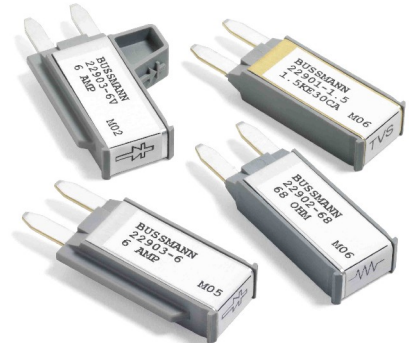
2.8 mm Plug-in Circuit Protection Components

NEW!

COOPER Bussmann

Transportation Products

Cooper Bussmann offers a series of vehicle style electrical protection devices including transorbs, resistors, and diodes. These devices are packaged in compact rugged housings with bladed terminals, making it easy to install into commonly used transportation industry power distribution modules such as the Cooper Bussmann VEC and RTMR. These circuit protection devices provide voltage and electrical current limiting functionality for vehicle circuitry. These components have terminals with industry standard 2.8mm blades (also known as '280 series' or 'mini'), and are available in various ratings. Bussmann's unique design ensures a solid electrical and mechanical connection to the internal componentry (Transorb, Resistor, or Diode) – ensuring that they will hold up to rugged and high-vibration environments. These components are designed for on- and off-highway applications including those required by heavy trucking, RV, construction, agriculture, ATV and material handling manufacturers.



Clockwise from top right:
Transorb, Resistor, Diode, and Diode
with extended 'wing' key option.

FEATURES

Basic Features:

Housing: Thermoplastic

Cover: Brushed aluminum – crimp fit, covered with label

Operating Temperature: -40°C (-40°F) to 125°C (260°F)

Voltage Rating: 12VDC or 24VDC

Terminals: 2.8mm blades on 8.1mm centerline spacing

The housing used for transorbs, resistors, and diodes is moisture repellent; however, for prolonged exposures to adverse environments, an exterior covering/protection is recommended.

(Transorbs are fast acting devices used to clamp or protect circuitry from voltage spikes.)

Power Rating: 1500W

Voltage Clamp Rating: 27Vdc currently available. (Consult factory for other voltages.)

Transorbs are typically bi-directional.

Transorb:

22901 Series

Resistor:

22902 Series

Diode:

22903 Series

(Resistors are used for various purposes including to drop the voltage in a circuit.)

Power Rating: 5W

Resistance Rating: Currently available at 68Ω, but many other ratings (.005Ω -40KΩ) are possible. (Consult factory.)

Resistors are bi-directional.

(Diodes are used to prevent reverse flow in circuitry.)

Current Rating: 6A currently available.

Keying Options: Standard longitudinal key on side; optional additional 'wing' on opposite side. In addition to keying options, the labeling denotes proper orientation.

Diodes are uni-directional.

Part Number

Description

22901-1.5

Transorb - 1.5 KE/27V available now. Consult factory for other ratings.

22902-XX

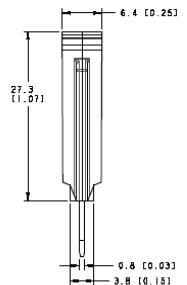
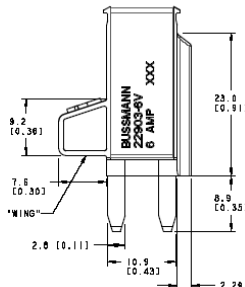
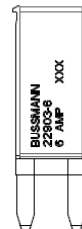
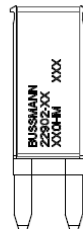
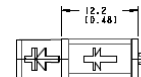
Resistor - XXΩ, 5 Watt

22903-6

Diode - 6A (standard key)

22903-6V

Diode - 6A (standard key and additional 'wing' key)



THIS STYLE IS USED FOR:
22901-1.5 (TRANSORB)

THIS STYLE IS USED FOR:
22902-XX (RESISTOR)

KEY
22903
VERSIONS
ONLY.

9.2
[0.36]

7.8
[0.30]

2.8
[0.11]

10.2
[0.40]

2.28
[0.090]

23.8
[0.94]

8.9
[0.35]

6.4
[0.25]

27.3
[1.07]

9.8
[0.63]

3.8
[0.15]

Data sheets for components are available upon request.

Cooper Bussmann Transportation Products • 175 Hansen Court • Wood Dale, IL 60191-1145

Customer Satisfaction Phone: 888-867-8194 • Technical Support Phone: 888-478-8324 • Fax: 800-832-9873

Web Site: www.bussauto.com

Concept 1A-06-05

Mouser Electronics

Authorized Distributor

Click to View Pricing, Inventory, Delivery & Lifecycle Information:

[Eaton:](#)

[22902-68](#) [22902-100](#) [22902-1K](#) [22902-200](#) [22902-2K](#) [22903-6](#) [22902-120](#) [22902-1500](#) [22902-500](#)