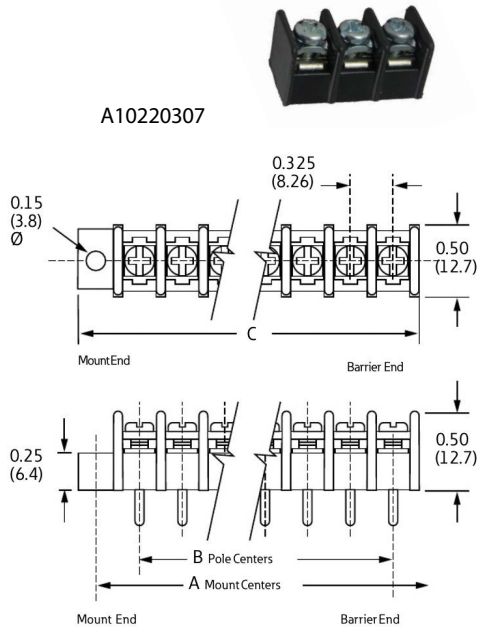


## Single Row Terminal Blocks

# A1

### Dimensions Inches (Millimeters)

A1



### Specifications

**Rating:** 20A, 250V\*

**Center Spacing:** 0.325" (8.26mm)

**Wire Range:** #14-22 AWG Cu

**Screw Size:** #6-32 zinc-plated phillslot wire-ready screws with a #2 driving recess.

**Torque Rating:** 9 lb-in.

**Base:** Standoffs are standard on CB1000 for easy flux washing.

**Distance Between Barriers:** 0.26" (6.6mm)

**Recommended PCB Hole Diameter:** 0.070" (1.78mm)

**Operating Temperature:** 105°C (221°F) max., -40°C (-40°F) min.

**Molded Material:** Black, UL Rated 94V0 Thermoplastic

**Breakdown Voltage:** 1600V

**Agency Information:** UL/CSA; IEC Compliance; CE Certified;

UL File: E62622, CSA File: 15364

\* General industrial applications

Poles	MOUNTING ENDS ONLY		BARRIER & MOUNTING ENDS	BARRIER ENDS ONLY
	A Mounting Ctrs.	C Length	B Pole Ctrs.	C Length
02	0.98	1.37	0.33	0.72
03	1.30	1.69	0.65	1.04
04	1.63	2.02	0.98	1.37
05	1.95	2.34	1.30	1.69
06	2.28	2.67	1.63	2.02
07	2.60	2.99	1.95	2.34
08	2.93	3.32	2.28	2.67
09	3.25	3.64	2.60	2.99
10	3.58	3.97	2.93	3.32
11	3.90	4.29	3.25	3.64
12	4.23	4.62	3.58	3.97
13	4.55	4.94	3.90	4.29
14	4.88	5.27	4.23	4.62
15	5.20	5.59	4.55	4.94
16	5.53	5.92	4.88	5.27
17	5.85	6.24	5.20	5.59
18	6.18	6.57	5.53	5.92
19	6.50	6.89	5.85	6.24
20	6.83	7.22	6.18	6.57
21	7.15	7.54	6.50	6.89
22	7.48	7.87	6.83	7.22
23	7.80	8.19	7.15	7.54
24	8.13	8.52	7.48	7.87
25	8.45	8.84	7.80	8.19
26	8.78	9.17	8.13	8.52
27	9.10	9.49	8.45	8.84
28	9.43	9.82	8.78	9.17
29	9.75	10.14	9.10	9.49
30	10.08	10.47	9.43	9.82

Dimensions in inches. To convert to millimeters, multiply by 25.4.

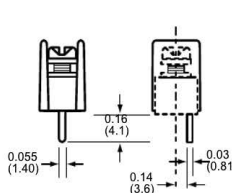


Powering Business Worldwide

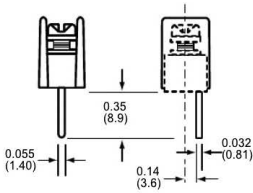
## Part Numbering System

Family	Terminal Style	Base/End	Poles	Screw Options	Options
<div> <div></div> <div></div> <div></div> </div> <p><b>A1</b> - standard barrier</p> <p><b>CB1</b> - closed back</p>	<div> <div></div> <div></div> </div> <p><b>02</b> - printed circuit</p> <p><b>04</b> - wire wrap</p> <p><b>07</b> - extended pin</p>	<div> <div></div> </div> <p><b>1</b> - mount end</p> <p><b>2</b> - barrier end</p>	<div> <div></div> <div></div> </div> <p><b>02 to 24</b> A1</p> <p><b>02 to 30</b> CB1</p>	<div> <div></div> <div></div> </div> <p>Blank-std. screws</p> <p><b>03</b>- stainless steel</p> <p><b>07</b>- steel SEMS &amp; washer (not available with hardware options)</p>	<div> <div></div> <div></div> <div></div> </div> <p><b>DR</b> - angle mts. (A1 only-pg 5)</p> <p><b>B1 to B9</b> - 0.187"</p> <p>QC (all positions)</p> <p><b>L1 to L6</b> marking options (pg 25)</p> <p><b>LT1 to LT6</b> marking options (CB1 only-pg 25)</p> <p><b>MP &amp; MT</b> - mounting plates 0.150 dia (pg 5)</p> <p><b>R26</b> - rightangle bends (A1 only-pg 5)</p>

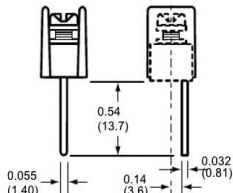
## Terminal Styles Inches (Millimeters)



**02**  
Printed Circuit



**04**  
Wire Wrap Tail



**07**  
Extended Pin

## Screw Options Wire ready screws standard on all terminal styles

(Bulk ordering part numbers are in parentheses)



**Standard**  
Zinc-Plated Steel (F508-J)



**03**  
Stainless Steel (F510-J)

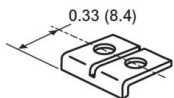


**07**  
Zinc-Plated Steel Screws (F522-J)

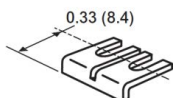
## Hardware Options Inches (Millimeters)

(Bulk ordering part numbers are in parentheses)

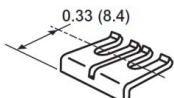
### Jumpers



(JA1-xx-J)

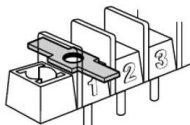


(JB1-xx-J)

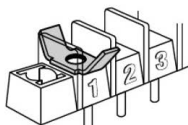


(JC1-xx-J)

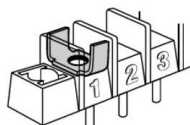
### Quick Connects Blade Width B = 0.187"



**B1 (1B1-J)\*\***



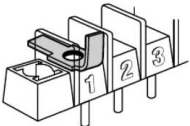
**B2 (1B2-J)\*\***



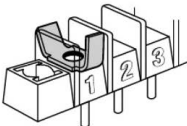
**B3 (1B3-J)\*\***



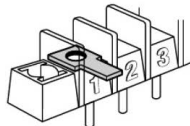
**B4 (1B4-J)\*\***



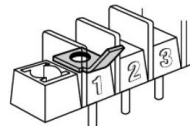
**B5 (1B5-J)\*\***



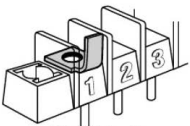
**B6 (1B6-J)\*\***



**B7 (1B7-J)**



**B8 (1B8-J)**



**B9 (1B9-J)**

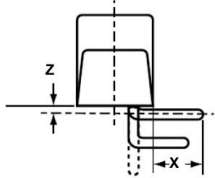
\*\* N/A on CB1

\*Contact Eaton for desired configuration

## Mounting Options

### Right Angle Bends (A1 only)

Right angle terminals are offered on the A1. Configurations are defined in these dimensions: X = pin extension beyond the block base; Z = length from block base to centerline of the terminal tip. Standard bends consist of the X and Z dimensions shown in the chart. Specify by adding the R26 Bend Option Code to the terminal part number.

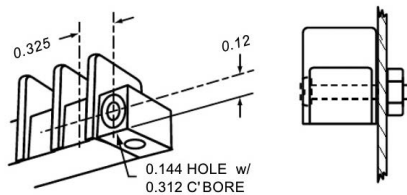


Bend Option Code	X	Z
R26 (04 terminal only)	0.14 (3.5)	0.09 (2.3)

Dimensions: in (mm)

### Right Angle Bends (A1 only)

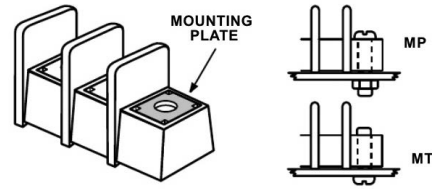
(Dimensions in inches)



### Option DR

Counterbored holes across mount ends of block enable fastening with two screws at right angles to normal mount position.

### Mounting Plates



### Options MP & MT

**MP** Metal inserts with 0.150" (3.8) dia. hole accept #6 screw.

**MT** Metal inserts with tapped hole accept #6-32 screw.

Bulk part numbers **1MP-J** & **1MT-J**.

## Contact Us

### Sales and Customer Service

#### Americas

Email: [elx.americas@eaton.com](mailto:elx.americas@eaton.com)

#### Europe, Middle East, Africa

Email: [elx.emea@eaton.com](mailto:elx.emea@eaton.com)

#### China

Email: [elx.cn@eaton.com](mailto:elx.cn@eaton.com)

#### Japan

Email: [elx.jp@eaton.com](mailto:elx.jp@eaton.com)

#### Korea

Email: [elx.kr@eaton.com](mailto:elx.kr@eaton.com)

#### South East Asia

Email: [elx.sea@eaton.com](mailto:elx.sea@eaton.com)

#### Taiwan

Email: [elx.tw@eaton.com](mailto:elx.tw@eaton.com)

### Global Technical Support

Magnetics: [InductorTech@eaton.com](mailto:InductorTech@eaton.com)

Circuit Protection: [FuseTech@eaton.com](mailto:FuseTech@eaton.com)

Supercapacitors: [CapacitorTech@eaton.com](mailto:CapacitorTech@eaton.com)

[www.eaton.com/terminalblocks](http://www.eaton.com/terminalblocks)

## Tools

### Eaton's Electronics Product Selection Tools



#### PARAMETRIC SEARCH

Drill down into the Eaton Electronics product database to find the right part for your application.



#### IC MATCHING

Find the Eaton Electronics parts called out on IC manufacturers' demo and evaluation boards.



#### CROSS REFERENCE

Find a cross to a competitor's product or to an alternate Eaton Electronics part number.



#### SUPERCAPACITOR CALCULATOR

Determine your calculated requirements and design capability.



#### TERMINAL BLOCK SELECTOR

Find the right terminal block for any application.



#### AUTOMOTIVE ELECTRONICS SOLUTIONS

Find electronics components for automotive solutions.

[tools.eatonelectronics.com](http://tools.eatonelectronics.com)

# Mouser Electronics

Authorized Distributor

Click to View Pricing, Inventory, Delivery & Lifecycle Information:

## Eaton:

[A10221307](#) [A10221507](#) [A10222207](#) [A10222407](#) [A10410607R26](#) [A10411207R26](#) [A10420307R26](#) [A10420607R26](#)  
[A10421207R26](#) [A10421607R26](#) [A10710203](#) [A10710207](#) [A10710307](#) [A10710407MT](#) [A10720507](#) [A10720707](#)  
[A10721007](#) [A10720607](#) [A10211207](#) [A10420407](#) [A10420807](#) [A10421807R26](#) [A10210803](#) [A10420207R26](#)  
[A10712007](#) [A10711803](#) [A10211003](#) [A10220503](#) [A10211503MP](#) [A10420907R26](#) [A10410303](#) [A10221407](#)  
[A10220707](#) [A10220803](#) [A10721103](#) [A10212007](#) [A10410707R26](#) [A10411607R26](#) [CB10220407](#) [A10211603](#)  
[CB10720507](#) [A10720207](#) [A10210403](#) [A10710607](#) [A10420307](#) [A10221807](#) [A10721507](#) [A10421007R26](#) [A10220507](#)  
[A10412407](#) [A10720807](#) [A10222007](#) [A10210507](#) [A10210207](#) [A10410403R26](#) [A10221107](#) [A10210307](#)  
[A10410807R26](#) [A10720207R45](#) [A10410703R26](#) [A10710507](#) [A10221707](#) [A10421303R26](#) [A10710403](#) [A102204B3](#)  
[A10420807R26](#) [CB10221407LT1](#) [A10210607](#) [A10211303](#) [A10410307](#) [A10211007](#) [A10720907](#) [A10710807](#)  
[A10221907](#) [A10221607](#) [A10212207](#) [A10210407](#) [A10711007](#) [A102210B3](#) [A10720407](#) [A10720603](#) [A10721207](#)  
[A10220907](#) [A10420407R26](#) [CB10211007MP](#) [A10210603](#) [A10220207L5](#) [A10410207](#) [A10410507](#) [A10210303](#)