

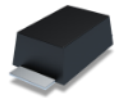


Powering Business Worldwide

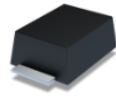
Automotive Rated TVS Diodes

Eaton Automotive TVS Diodes

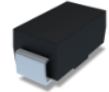
SMD TVS (Power)



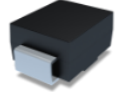
SMFxxH



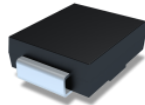
SMAJxxH



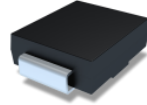
SMBJxxH/15BJxxH



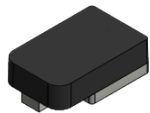
SMCJxxH



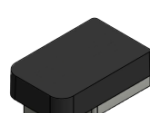
SMDJxxH



5.0SMDJxxH



SM8SxxH



SM8TxxH

Radial TVS



6KPxxH



12KPxxH

Product Description

Transient voltage suppressors with AEC-Q101 qualifications

Features & Benefits

- Offers peak power ratings from 200 W up to 12000 W
- Low inductance, low leakage current and excellent voltage clamping capability
- Broad range of footprints and peak power ratings in SMD and THT packages
- Product families meet up to ISO 16750-2 5a & 5b standards
- Leverages V-Groove interlock and dimple design that offers high reliability
- Can provide both bi-directional and uni-directional characteristics

Applications

- Communication and Infotainment systems
- Networking systems and body electronics
- Advanced Driver Assistance Systems (ADAS) and safety systems
- Automotive Lighting
- Battery Management Systems

Automotive TVS Diode Product Matrix



**TVS Diode
Surface Mount**

SOD-123FL
SMF

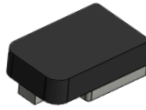
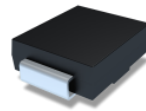
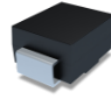
DO-214AC
SMAJ

DO-214AA
SMBJ

SMBF
15BJ

DO-214AB
SMCJ, SMDJ,
5-0SMDJ

DO-218AB
SM8S, SM8T

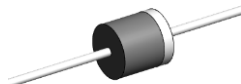


Series Name	Package	Reverse standoff voltage range	Peak current (10/1000 μs)	Peak Power
SMFxxH	SOD-123FL	10 - 58 V	2.1 to 11.8 A	200 & 400 W
SMAJxxH	DO-214AC	5 to 58 V	4.3 to 23.5 A	400 W
SMBJxxH	DO-214AA	5 to 58 V	6.4 to 30.2 A	600 W
15BJxxH	SMBF	12 to 58 V	16.1 to 88.2 A	1500 W
SMCJxxH	DO-214AB	15 to 58 V	16.1 to 61.5 A	1500 W
SMDJxxH	DO-214AB	12 to 54 V	34.4 to 150.8 A	3000 W
5-0SMDJxxH	DO-214AB	15 to 43 V	72 to 205 A	5000 W
SM8SxxH	DO-218AB	18 - 43 V	95.1 to 226 A	6600 W
SM8TxxH	DO-218AB	20 V; 33-36 V	138 to 247 A	8000 W



**TVS Diode
Thru-hole**

P600/R6
15KP



Series Name	Package	Reverse standoff voltage range	Peak current (10/1000 μs)	Peak Power
6KPxxH	P-600/R-6	15 to 43 V	95.1 to 270.5 A	6600 W
12KPxxH	P-600/R-6	20 to 72 V	103.4 to 249.9 A	12000 W

Family Cross Reference

Eaton Family	Littelfuse	Vishay	Bourns	ST Micro
SMFxxH	SZSMF	SMF...H		
SMFxxLH	TPSMF4L	VTVS....H	SMF4L-Q	
SMAJxxH	SZ1SMA	SMAJ...H & P4SMA...H	SMAJ-Q & P4SMA-Q	SM4T
SMBJxxH	TPSMB & SZ1SMB	SMBJ...H & P6SMB...H	SMBJ-Q & P6SMB-Q	SM6T
15BJxxH				
SMCJxxH	TPSMC & SZ1SMC & SZ1.5SMC	SMCJ...H & 1.5SMC...H	SMCJ-Q & 1.5SMC-Q	SM15T
SMDJxxH	TPSMD	SMC3K...H & 3KASMC...H	SMLJ-Q	SM30T
5-0SMDJxxH		SMC5K...H & 5KASMC...H	5.0SMDJ-Q	
SM8SxxH	SLD5S & SLD6S	SM5A & SM6A & SM8A	SM8S-Q	
SM8TxxH	SLD8S		SM8SF-Q	
6KPxxH	TLP & TP5KP	6KA & 5KP...H		LDP
12KPxxH				

Mouser Electronics

Authorized Distributor

Click to View Pricing, Inventory, Delivery & Lifecycle Information:

Eaton:

[12KPE28AH](#) [12KPE72AH](#) [15BJ110CAH](#) [15BJ160CAH](#) [15BJ30AH](#) [15BJ5-0AH](#) [15BJ6-5CAH](#) [5-0SMDJ22CAH](#)
[6KPE22AH](#) [SM8S10AH](#) [SM8S14CAH](#) [SM8S28CAH](#) [SMAJE10CAH](#) [SMAJE15CAH](#) [SMAJE17AH](#) [SMAJE26AH](#)
[SMAJE48CAH](#) [SMAJE78CAH](#) [SMBJE12AH](#) [SMBJE16AH](#) [SMBJE250CAH](#) [SMBJE40CAH](#) [SMBJE460AH](#) [SMBJE8-](#)
[0AH](#) [SMCJE18CAH](#) [SMCJE26CAH](#) [SMCJE33AH](#) [SMCJE51AH](#) [SMDJE14CAH](#) [SMDJE28CAH](#) [SMDJE40AH](#)
[SMFE110AH](#) [SMFE15ALH](#) [SMFE18AH](#) [SMFE220CAH](#) [SMFE28ALH](#) [SMFE45CAH](#) [SMFE64ALH](#) [SMFE78AH](#)
[12KPE20CAH](#) [12KPE36CAH](#) [15BJ130AH](#) [15BJ180AH](#) [15BJ200CAH](#) [15BJ40CAH](#) [5-0SMDJ16AH](#) [5-0SMDJ36AH](#)
[6KPE15CAH](#) [6KPE33CAH](#) [SM8S22AH](#) [SM8S40AH](#) [SM8T36AH](#) [SMAJE12AH](#) [SMAJE200CAH](#) [SMAJE330CAH](#)
[SMAJE400AH](#) [SMAJE58AH](#) [SMBJE14CAH](#) [SMBJE190CAH](#) [SMBJE220AH](#) [SMBJE350AH](#) [SMBJE58CAH](#)
[SMCJE120CAH](#) [SMCJE150CAH](#) [SMCJE170AH](#) [SMCJE210AH](#) [SMCJE22AH](#) [SMCJE400CAH](#) [SMCJE43CAH](#)
[SMCJE60CAH](#) [SMCJE90AH](#) [SMDJE18AH](#) [SMDJE48CAH](#) [SMFE120CAH](#) [SMFE13AH](#) [SMFE170AH](#) [SMFE24CAH](#)
[SMFE36AH](#) [SMFE40CALH](#) [SMFE51CAH](#) [12KPE58CAH](#) [15BJ110AH](#) [15BJ17CAH](#) [15BJ20AH](#) [15BJ5-0CAH](#)
[15BJ6-5AH](#) [5-0SMDJ33CAH](#) [6KPE16AH](#) [SM8S11AH](#) [SM8S16AH](#) [SM8T22AH](#) [SM8T32AH](#) [SMAJE150AH](#)
[SMAJE170CAH](#) [SMAJE30CAH](#) [SMAJE400CAH](#) [SMAJE8-0AH](#) [SMBJE120CAH](#) [SMBJE190AH](#) [SMBJE220CAH](#)