

Traction Fuse  
1000 Vdc

TRF



**Catalog Symbol:** TRF

**Traction Fuse**

**Construction**

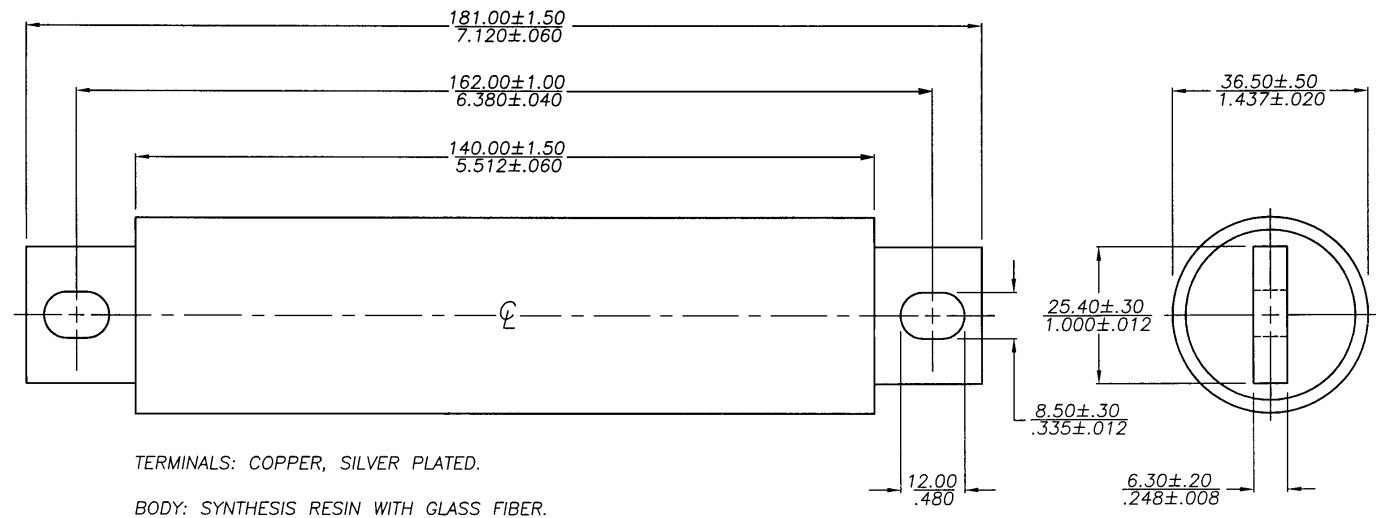
**Blades:** Copper Terminals - Silver Plated

**Body:** Synthesis Resin with Glass Fiber

**Filler:** Quartz Silica Sand

**Elements:** Silver

Part Number	Current Rating (A)	Voltage Rating (VDC)	Watt Loss	Interrupting Rating (DC)	Carton Quantity
TRF-70	70	1000	12.4	100KA	1
TRF-80	80	1000	13.7	100KA	1
TRF-100	100	1000	16.6	100KA	1
TRF-125	125	1000	19.9	100KA	1
TRF-160	160	1000	27.5	100KA	1

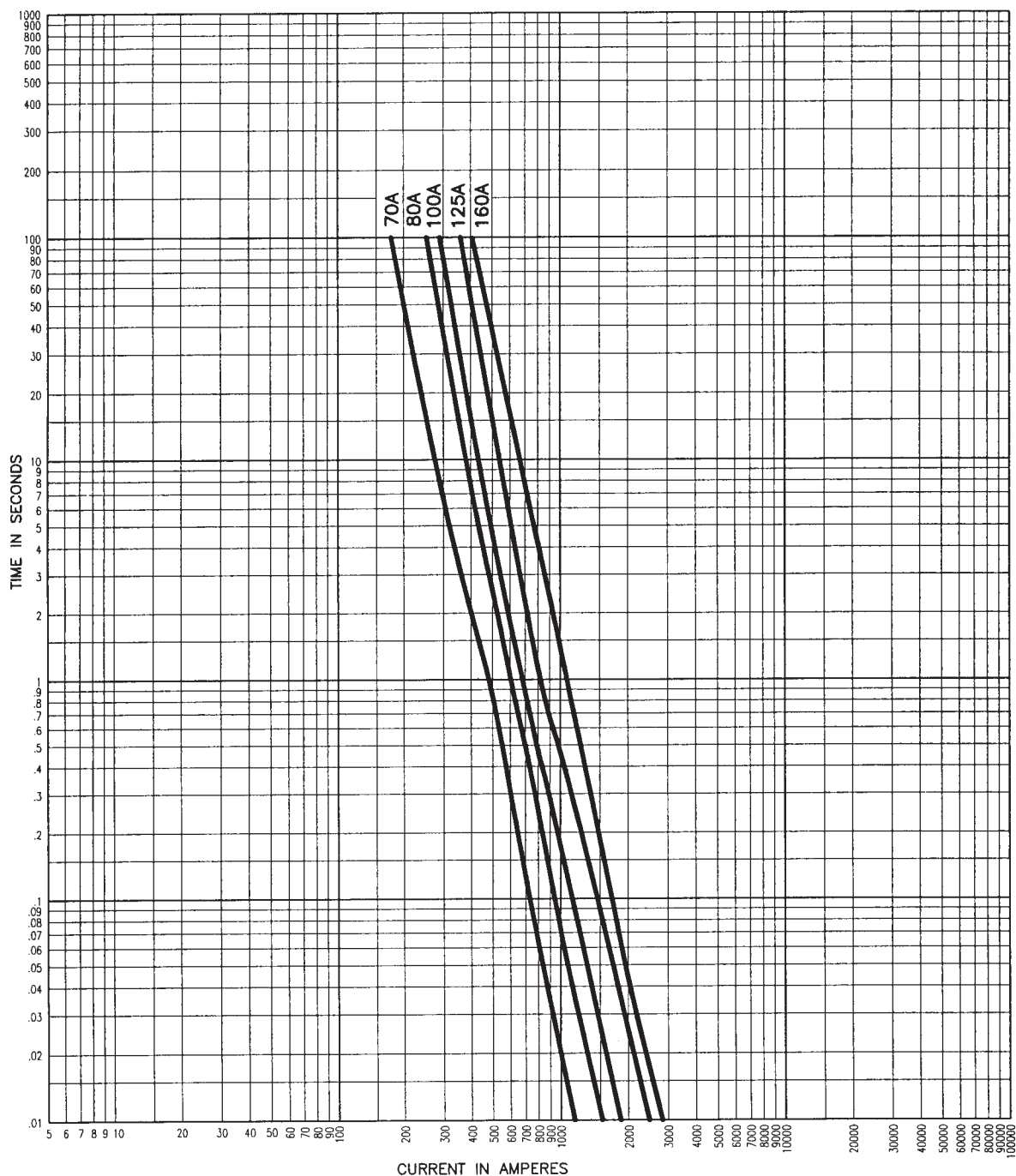


CE CE logo denotes compliance with European Union Low Voltage Directive (50-1000 Vac, 75-1500 Vdc). Refer to BIF document #8002 or contact Bussmann Application Engineering at 636-527-1270 for more information.

# Traction Fuse

## 1000 Vdc

### Time-Current Characteristic Curves—Average Melt



The only controlled copy of this BIF document is the electronic read-only version located on the Bussmann Network Drive. All other copies of this document are by definition uncontrolled. This bulletin is intended to clearly present comprehensive product data and provide technical information that will help the end user with design applications. Bussmann reserves the right, without notice, to change design or construction of any products and to discontinue or limit distribution of any products. Bussmann also reserves the right to change or update, without notice, any technical information contained in this bulletin. Once a product has been selected, it should be tested by the user in all possible applications.

# Mouser Electronics

Authorized Distributor

Click to View Pricing, Inventory, Delivery & Lifecycle Information:

Eaton:

[TRF-100](#) [TRF-160](#) [TRF-70](#) [TRF-80](#) [TR-GBH-V016A6F](#) [TR/GBH-V016A6F](#) [BK3/GBH-V015A6F](#) [BK3/GBH-V025A6F](#) [BK3/GBH-V010A6F](#) [BK3/GBH-V016A6F](#) [BK3/GBHV2030A6FR](#) [BK3/GBH-V020A6F](#)