

# Telcom Protection Products

## Section Contents Page

Telpower® compact fused disconnect switches .....388

Telpower miniature fused disconnect switches .... 389

### Fused disconnect switches for TPA fuses

TP15914 4-Pole disconnect switch .....390

TP11590-4 4-Pole disconnect switch .....391

TPA & TPA-B Fuses .....391

### Fused disconnect switches for TPS fuses

15800 1-Pole fused disconnect switch .....392

TPS Fuses .....392

### Fused disconnect switches

TP158HC panel mount, rear access switch .....393

15100 1-Pole switch for use with TPL fuses .....394

15200 1-Pole switch for use with TPL fuses .....394

**TPHCS Telpower high-current switch .....395**

**TPL Telpower 70-600A: 170Vdc fuses .....396**

**TPN Telpower 1-600A: 170Vdc fuses .....397**

**70 Series Indicating fuses .....398**

**15087 Fuse holders .....398**

**HLS, HLT & PCT fuse holders .....399**

**GMT Fast acting fuses .....399**

**GMT-A Fast acting fuse .....399**

### Telpower specialty fuses

7 Type Fuses .....400

11 Type Fuse .....400

24 & WER Type non-indicating, visible link fuses ...400

74 Type Fast acting fuses .....400

75 Type Cylindrical fuses with leads .....401

76 Type Cylindrical fuses with leads .....401

80 Type visual indicating fuses .....401

81 Type Fast acting, non-indicating fuses .....401

### Filtered terminal blocks

F38 Series 2- to 8-Pole block .....402

### Power feed through terminal blocks

Series C7021 2- to 6-Pole block .....403

Series C7024 1- to 12-Pole block .....404



# Telpower® Compact Fused Disconnect Switches

## TPC & TPCDS

### Specifications Descriptions:

- **TPC:** Telpower® compact current-limiting fuses.
- **TPCDS:** Telpower compact fused disconnect switch available in two disconnect switch profiles in addition to a variety of terminal styles. Recommended 0.75" center-to-center product spacing.

**Dimensions:** See Data Sheet 5023.

### Ratings:

- Volts: — 80Vdc  
 Amps: — 3-125A (See Catalog Numbers table for details)  
 IR: — 100kA

**Agency Information:** CE, UL Recognized (investigated to UL 1801) as a disconnect switch for the interruption of load current by means of withdrawing the fuse pullout. Recognized to US and Canadian requirements under the component recognition program of Underwriters Laboratories Inc. Files E219046 and E56412.

**Flammability Ratings:** Fuse UL 94V0, 170°C RTI, Housing UL 94V0, 120°C RTI.

### Features and Benefits

- Highest interrupting rating (100kA) available and complete system coordination for dc circuit protection for compact footprint providing a superior protection solution for replacement of existing dc telecom circuit breakers
- AmpColor ID™ System makes fuse replacement easy
- Local and remote open fuse indication. Local alarm indication provided by LED on TPC fuse
- Remote alarm terminal available in three positions common to dc circuit protection devices

### Typical Applications

- Telecommunications DC power circuit protection
- Replacement of DC telecom circuit breakers
- Applications where venting of arc or molten metals and gases during opening would pose a problem to surrounding devices



### Catalog Numbers

| TPCS disconnect switch |           | TPC Current-Limiting Fuse |            |
|------------------------|-----------|---------------------------|------------|
| Catalog Numbers        | Amp Range | Catalog Numbers           | Amp Rating |
| TPCDS-BBE-1            | 3-125     | TPC-3                     | 3          |
| TPCDS-BBE-2            | 3-125     | TPC-4                     | 4          |
| TPCDS-BBE-3            | 3-125     | TPC-5                     | 5          |
| TPCDS-BBM-1            | 3-125     | TPC-6                     | 6          |
| TPCDS-BBM-2            | 3-125     | TPC-7                     | 7          |
| TPCDS-BBM-3            | 3-125     | TPC-8                     | 8          |
| TPCDS-BSE-1            | 3-125     | TPC-10                    | 10         |
| TPCDS-BSE-2            | 3-125     | TPC-12                    | 12         |
| TPCDS-BSE-3            | 3-125     | TPC-15                    | 15         |
| TPCDS-BSM-1            | 3-125     | TPC-20                    | 20         |
| TPCDS-BSM-2            | 3-125     | TPC-25                    | 25         |
| TPCDS-BSM-3            | 3-125     | TPC-30                    | 30         |
| TPCDS-SSE-1            | 3-125     | TPC-40                    | 40         |
| TPCDS-SSE-2            | 3-125     | TPC-50                    | 50         |
| TPCDS-SSE-3            | 3-125     | TPC-60                    | 60         |
| TPCDS-SSM-1            | 3-125     | TPC-75                    | 75         |
| TPCDS-SSM-2            | 3-125     | TPC-90                    | 90         |
| TPCDS-SSM-3            | 3-125     | TPC-100                   | 100        |
| TPCDS-D-BC1*           | 3-125     | TPC-125                   | 125        |
| TPCDS-D-BC2*           | 3-125     |                           |            |
| TPCDS-D-CC1*           | 3-125     |                           |            |
| TPCDS-D-SEC1*          | 3-125     |                           |            |
| TPCDS-D-SEC2*          | 3-125     |                           |            |
| TPCDS-D-SMC1*          | 3-125     |                           |            |
| TPCDS-D-SMC2*          | 3-125     |                           |            |

\*Not investigated to Canadian Requirements.

# Telpower Miniature Fused Disconnect Switches

## TPM & TPMDS

### Specifications

#### Description:

##### — TPM:

Telpower miniature current-limiting fuses.

##### — TPMDS:

Telpower miniature fused disconnect switch.



**Dimensions:** See Data Sheet 5022.

#### Ratings:

Volts: — 80Vdc

Amps: — 3-30A

IR: — 20kA

**Agency Information:** CE, UL Recognized (investigated to UL 1801) as a disconnect switch for the interruption of load current by means of withdrawing the fuse pullout.

Recognized to US and Canadian requirements under the component recognition program of Underwriters Laboratories Inc. Files E219046 and E56412.

**Flammability Ratings:** Fuse UL 94V0, 170°C RTI; Switch UL 94V0, 140°C RTI.

### Features and Benefits

- Smallest and most versatile fused disconnect switch available allowing for assembly into 1 U (1.75"/44.5mm) panel. Easy to connect; Load: ¼" quick-connect or bolted connection with 10-32 (M5) captive nut, Line: ¼" quick-connect or screw connection with clearance hole for #10 (M5) bolt.
- AmpColor ID™ System makes fuse replacement easy
- Switch design provides for easy panel mounting by single captive 4-40 (M3) nut and panel notch integral to switch footprint.
- Complete system coordination capability with local and remote open fuse indication. Local alarm indication provided by LED on TPM fuse (maximum alarm circuit current: 20mA)

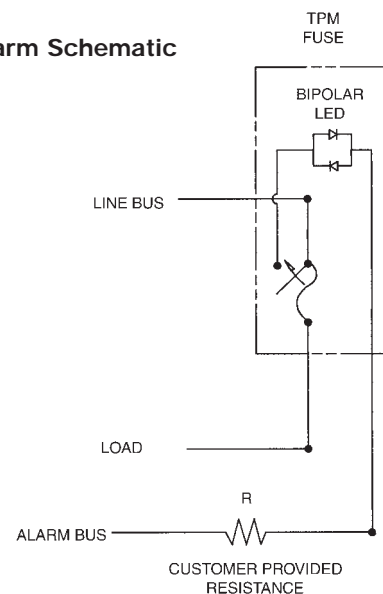
### Typical Applications

- Telecommunications DC power circuit protection
- Applications with restricted space, or mounting in 1 U panels

### Catalog Numbers

| Catalog Numbers | Description                  | Amp Rating |
|-----------------|------------------------------|------------|
| TPM-3           | Fuse                         | 3          |
| TPM-4           | Fuse                         | 4          |
| TPM-5           | Fuse                         | 5          |
| TPM-6           | Fuse                         | 6          |
| TPM-7           | Fuse                         | 7          |
| TPM-8           | Fuse                         | 8          |
| TPM-10          | Fuse                         | 10         |
| TPM-12          | Fuse                         | 12         |
| TPM-15          | Fuse                         | 15         |
| TPM-20          | Fuse                         | 20         |
| TPM-25          | Fuse                         | 25         |
| TPM-30          | Fuse                         | 30         |
| TPMDS-E         | Disconnect, English hardware | 3-30       |
| TPMDS-M         | Disconnect, Metric hardware  | 3-30       |

### TPM Alarm Schematic



### NOTES:

1. The resistance, R, must be provided by the end-user to limit the alarm output current to a maximum of 20mA. The value, R, should be calculated using the system voltage value.
- If remote alarm functionality is not required, the END-USER CIRCUITRY must still be supplied to provide a resistive path to the return for the local alarm to properly function.
2. The fuse is polarized to maintain proper orientation with the switch housing. The line and load terminals are identified on the switch housing.

For product data sheets, visit [www.cooperbusssmann.com/datasheets/ulcsa](http://www.cooperbusssmann.com/datasheets/ulcsa)

# Fused Disconnect Switches for TPA Fuses

## TP15900-4

### Specifications

**Description:** 4-pole disconnect switch for use with Telpower fuses Type TPA & TPA-B.

**Dimensions:** See Dimensions illustrations.

### Ratings:

Volts: — 145Vdc (40A)  
— 80Vdc (50A)  
Amps: — 40A@145Vdc  
— 50A@80Vdc

**Agency Information:** CE, UL Recognized File E97649 as a disconnect switch for interruption of load current by means of withdrawing the fuse carrier. UL Recognized as a component for telecommunication power distribution equipment (UL category QPQY2). UL Recognized fuses for branch circuit protection. CSA Component Acceptance for the system.

**Flammability Rating:** UL 94V0, 140°C.

### Features and Benefits

- Ease of installation - connection directly to busbar, reduces external wiring per pole. Rear accessibility for line and load terminations
- LED alarm signaling (LED current 30mA max)
- Local and remote open-fuse indication along with fuse orientation rejection feature and fuse presence indication
- Alarm test probe point, to allow on-site checking of alarm circuitry

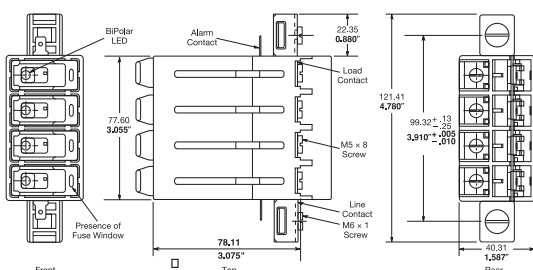
### Typical Applications

- Telecommunications DC power circuit protection

### Catalog Numbers

| Catalog Numbers | Description  |
|-----------------|--|
| TP15900-4       | 4-Pole common disconnect switch                            |
| TP15900-41      | 4-Pole common disconnect switch w/ Split Alarm, Split Line |

### Dimensions - mm (in)



### Accessories

- Spare fuse holders: Catalog Numbers 5TPH and TPSFH-AS.

Data Sheet: 5001

## TPA & TPA-B

### Specifications

**Description:** DC power distribution indicating fuses.

**Dimensions:** See Dimensions illustration.

### Ratings:

Volts: — 170Vdc TPA  
— 65Vdc TPA-B  
Amps: — 3-50A TPA  
— 20-30A TPA-B  
IR: — 100kA TPA  
— 20kA TPA-B

**Agency Information:** CE, UL Recognized, Guide JFHR2, File E56412, CSA Certified, Class 1422-30, File 53787.

### Features and Benefits

- Indication pin provides for local and remote indication when used with Cooper Busmann® TP15900-4 and TP15914 disconnect switches
- Patented "orange ring" fuse orientation features assures correct fuse position
- The UL Recognized ratings and current-limiting capability make this fuse ideal for cable protection on existing DC power distribution systems
- A unique blue label is used on all Telpower fuses to designate their DC capability

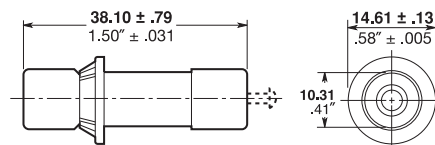
### Typical Applications

- Telecommunications DC power circuit protection

### Catalog Numbers (Amps)

| Catalog Numbers | Amp Rating | Catalog Numbers | Amp Rating |
|-----------------|------------|-----------------|------------|
| TPA-3           | 3          | TPA-30          | 30         |
| TPA-5           | 5          | TPA-40          | 40         |
| TPA-10          | 10         | TPA-50          | 50         |
| TPA-15          | 15         | TPA-B-20        | 20         |
| TPA-20          | 20         | TPA-B-25        | 25         |
| TPA-25          | 25         | TPA-B-30        | 30         |

### Dimensions - mm (in)



### Accessories

- Spare fuse holders: 5 position holder; 5TPH; 6 position holder; TPSFH-AS
- Use with fused disconnect switches TP15900-4, TP15914

Data Sheet: 5012



# Fused Disconnect Switches for TPS Fuses

## 15800

### Specifications

#### Description:

Fused disconnect switch for use only with the following fuses; Main: Telpower® TPS 3 to 70 Amp, Alarm: Cooper Bussmann GMT-A only (page 399). Recommend GMT-X Cover (page 399).

**Dimensions:** See Dimensions illustration.

#### Ratings:

Volts: — 60Vdc  
Amps: — 3-70A  
SCCR: — 100kA

**Agency Information:** CE, UL Recognized, Guide QPQY2, File E97649.

**Flammability Rating:** UL 94V0, 150°C.

### Features and Benefits

- Alarm output with wire wrap terminal or connection to 0.063" thick common alarm bus
- Spare alarm and power fuse compartment
- Mounting hardware included

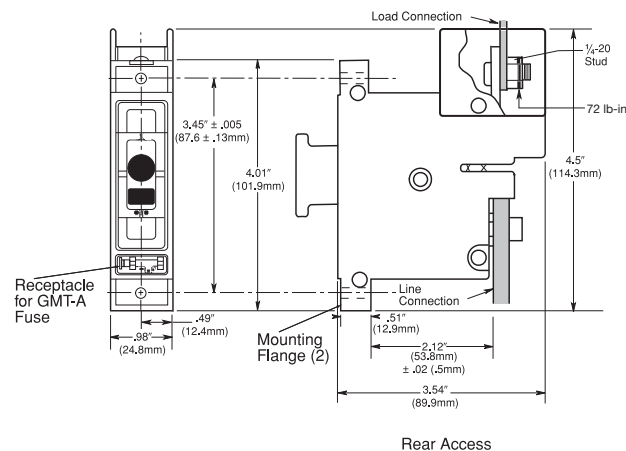
### Typical Applications:

- Telecommunications DC power circuit protection

### Catalog Numbers

| Catalog Numbers | Access Panel Mounting |
|-----------------|-----------------------|
| 15800-R-200     | Rear                  |
| 15800-F-200     | Front                 |

### Dimensions - in (mm)



### Accessories

- Spare fuse holders: Catalog Numbers TPSFH-AS (TPS fuses) and TPSFH-T (GMT fuses).

Data Sheet: 5002

## TPS

### Specifications

#### Description:

DC power distribution non-indicating fuses specifically designed to meet the unique needs of DC power distribution systems. For use with Cooper Bussmann® fused disconnect switch 15800.

**Dimensions:** See Dimensions illustration.

#### Ratings:

Volts: — 170Vdc  
Amps: — 1-70A.  
IR: — 100kA

**Agency Information:** CE, UL Recognized, Guide JFHR2, File E56412.

### Features/Benefits

- The UL Recognized ratings and current-limiting capability make this fuse ideal for cable protection on existing DC power distribution systems
- A unique blue label is used on all Telpower fuses to designate their DC capability
- Printed circuit board variations available

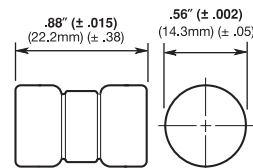
### Typical Applications

- Telecommunications DC power circuit protection
- Applications requiring printed circuit board mounting

### Catalog Numbers (Amps)

|        |         |         |          |
|--------|---------|---------|----------|
| TPS-1  | TPS-6L  | TPS-30  | TPS-50V  |
| TPS-1L | TPS-10  | TPS-30L | TPS-60   |
| TPS-2  | TPS-10L | TPS-35  | TPS-60L  |
| TPS-2L | TPS-15  | TPS-35L | TPS-70   |
| TPS-3  | TPS-15L | TPS-40  | TPS-70L  |
| TPS-3L | TPS-20  | TPS-40L | TPS-70LB |
| TPS-5  | TPS-20L | TPS-40V |          |
| TPS-5L | TPS-25  | TPS-50  |          |
| TPS-6  | TPS-25L | TPS-50L |          |

### Dimensions - in (mm)



### Accessories

- Spare fuse holder: TPSFH-AS, see page 414.

Data Sheet: 5009

# Fused Disconnect Switches

## TP158HC

### Specifications

**Description:** Panel mount, rear access high amp version of Cooper Bussmann® 15800 series fused disconnect switch for use only with the following fuses; Main: Telpower TPL-B 70-250 Amps, Alarm: Cooper Bussmann GMT-A.

**Dimensions:** See Data Sheet 5021.

### Ratings:

Volts: — 80Vdc  
Amps: — 70-250A  
SCCR: — 100kA

**Agency Information:** UL Recognized (investigated to UL 1801) as a disconnect switch for the interruption of load current by means of withdrawing the fuse pullout. Guide QPQY2, File E97649.

**Flammability Rating:** UL 94V0, 150°C.

### Features and Benefits

- Similar profile, mounting method, and backplane configuration as 15800 Series. The TP158HC can be installed into existing 15800 Series panels using the space of two 15800 disconnects
- Innovative new fuse pullout design eliminates need for tools to replace the Telpower type TPL-B fuse
- Alarm output with wire wrap terminal or connection to 0.063 inch (1.6mm) thick common alarm bus
- Hardware included: Load: washer, split lockwasher, and  $\frac{5}{16}$  - 18 nut (metric-M8 x 1.25)

### Typical Applications:

- Telecommunications DC power circuit protection

### Catalog Numbers

| Catalog Numbers | Hardware |
|-----------------|----------|
| TP158HC         | English  |
| TP158HC-M       | Metric   |

### Accessories

- Spare fuse holders: TPSFH-LB (TPL-B fuses) and TPSFH-T (GMT fuses).



### Application Notes

- The line connection uses a ¼-20 bolt (metric – M6X1) that threads into the line terminal. The line terminal is designed with a float of ±0.02" (± 0.50mm) to allow for variation in the distance between the TP158HC mounting flange and the line busbar (see Dimensions). Equipment should be designed to eliminate any relative movement between the TP158HC mounting flange and the line busbar.
- The alarm circuit is not intended for precharging of capacitive circuits. Alarm circuit current 1A maximum.



Easy Fuse Replacement



# Fused Disconnect Switches

## 15100

### Specifications

**Description:** Fused disconnect system for use with Telpower fuses Type TPL.

**Dimensions:** See Dimensions illustrations.

### Ratings:

Volts: — 60Vdc  
Amps: — 70-800A  
SCCR: — 100kA

**Agency Information:** CE, UL Recognized, Guide QPQY2, File E97649.

### Features and Benefits

- Single-pole fusible disconnect switch for primary DC power distribution
- Robust housing and terminal construction for demanding applications
- Panel mounting
- Easily connected to line or load bus

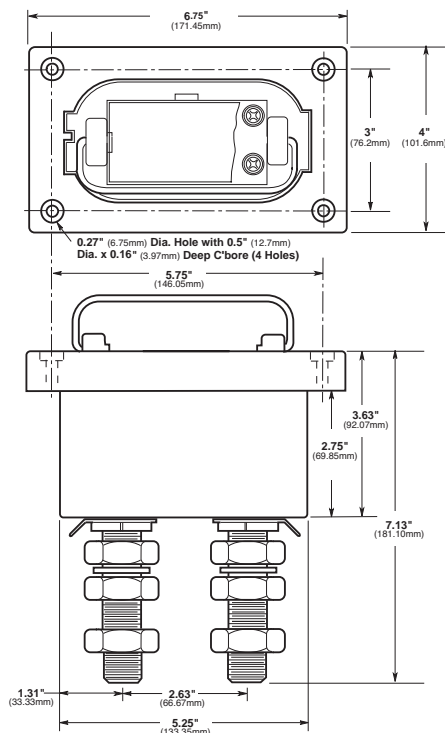
### Typical Applications

- Telecommunications DC power circuit protection

### Catalog Numbers

| Catalog Numbers | For Use With TPL Series Fuses |
|-----------------|-------------------------------|
| 15100-401       | 70-400A                       |
| 15100-601       | 300-800A                      |

### Dimensions - in (mm)



Data Sheet: 5003

## 15200

### Specifications

**Description:** Fused disconnect system for use with Telpower fuses Type TPL.

**Dimensions:** See Dimensions illustrations.

### Ratings:

Volts: — 60Vdc  
Amps: — 70-800A  
SCCR: — 100kA

**Agency Information:** CE, UL Recognized, Guide QPQY2, File E97649.

### Features and Benefits

- Fusible disconnect transfer switch for primary DC power distribution
- Robust housing and terminal construction for demanding applications
- Panel mounting
- Easily connected to line or load bus

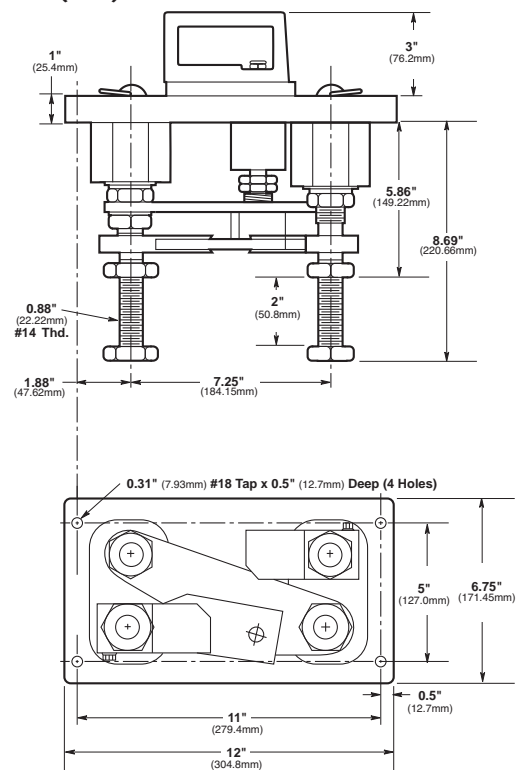
### Typical Applications

- Telecommunications DC power circuit protection

### Catalog Number

| Catalog Number | For Use With TPL Series Fuses |
|----------------|-------------------------------|
| 15200-602      | 70-800A                       |

### Dimensions - in (mm)



Data Sheet: 5004



# Telpower® High-current Switch

## TPHCS

### Specifications

**Description:** High current switch for use with Telpower fuses Type TPL-B, TPL-C and TPH.

Available as complete switch or pullout. Base may be purchased separately.

**Dimensions:** See Dimensions illustrations.

### Construction:

### Ratings:

Volts: — 80Vdc

Amps: — 70-800A

SCCR: — 100kA

**Agency Information:** UL Recognized (investigated to UL 1801) as a disconnect switch for the interruption of load current by means of withdrawing the fuse carrier. UL Recognized to meet the requirements for Canadian Standards.

### Features and Benefits

- Innovative design eliminates need for tools to replace the Telpower® Type TPL-B, TPL-C or TPH fuse
- Easy to install—captive fasteners allow for direct busbar mounting (bolts not included). Standard ¼" male quick-connect terminal for effortless remote alarm connection.
- Optional new electronic alarm eliminates need for parallel indicating fuses while providing local and remote open-fuse indications (maximum remote alarm current: 20mA); Bipolar alarm: designed for both Central Office and Radio applications, Local LED alarm indication for ease-of-viewing.
- Fuse presence window allows for easy viewing of installed fuse amp rating

### Typical Applications

- Telecommunications DC power circuit protection
- Compact design is ideal for today's high power, high-density cabinets



TPHCS800-MAV (shown)

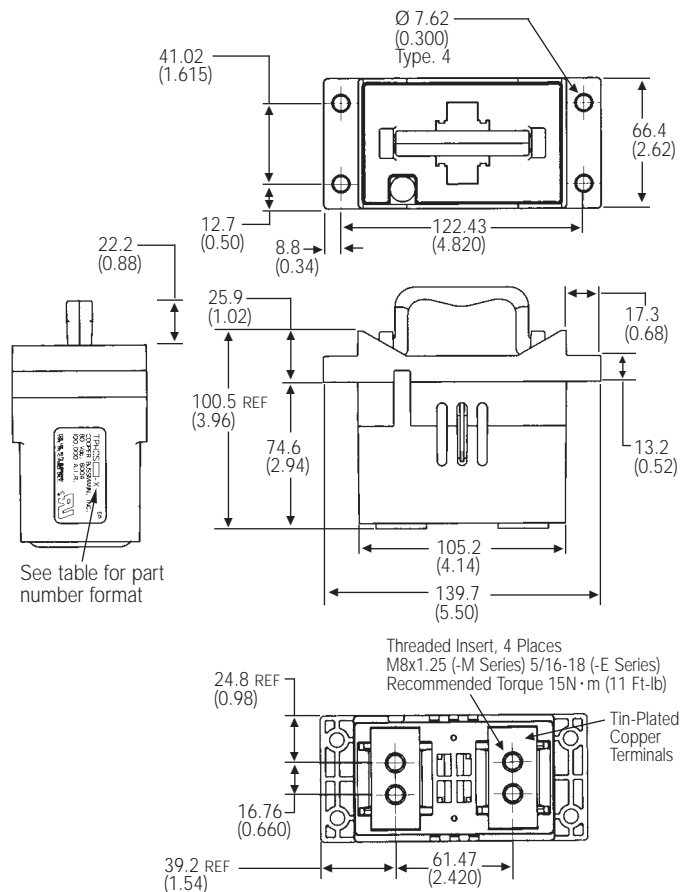
## Catalog Numbers - Switches (Pullout and Base)

| Catalog Numbers | Hardware/Option | Fuse Series  | Amp Rating |
|-----------------|-----------------|--------------|------------|
| TPHCS250-M      | Metric          | TPL-B        | 70-250     |
| TPHCS250-E      | English         | TPL-B        | 70-250     |
| TPHCS250-ML     | Metric, LED     | TPL-B        | 70-250     |
| TPHCS250-EL     | English, LED    | TPL-B        | 70-250     |
| TPHCS250-MAV    | Metric, Alarm   | TPL-B        | 70-250     |
| TPHCS250-EAV    | English, Alarm  | TPL-B        | 70-250     |
| TPHCS800-M      | Metric          | TPL-C or TPH | 300-800    |
| TPHCS800-E      | English         | TPL-C or TPH | 300-800    |
| TPHCS800-ML     | Metric, LED     | TPL-C or TPH | 300-800    |
| TPHCS800-EL     | English, LED    | TPL-C or TPH | 300-800    |
| TPHCS800-MAV    | Metric, Alarm   | TPL-C or TPH | 300-800    |
| TPHCS800-EAV    | English, Alarm  | TPL-C or TPH | 300-800    |

## Catalog Numbers - Components

| Catalog Numbers | Description Rating/Hardware/Option | Fuse Series  | Amp Rating |
|-----------------|------------------------------------|--------------|------------|
| TPHCS250-P      | Pullout only — 250A                | TPL-B        | 70-250     |
| TPHCS800-P      | Pullout only — 800A                | TPL-C or TPH | 300-800    |
| TPHCS-B-M       | Base only, Metric                  | —            | 800 Max    |
| TPHCS-B-E       | Base only, English                 | —            | 800 Max    |
| TPHCS-B-ML      | Base only, Metric, LED             | —            | 800 Max    |
| TPHCS-B-EL      | Base only, English, LED            | —            | 800 Max    |
| TPHCS-B-MAV     | Base only, Metric, Alarm           | —            | 800 Max    |
| TPHCS-B-EAV     | Base only, English, Alarm          | —            | 800 Max    |

## Dimensions mm (in)



### NOTES:

1. TPHCS250 and TPHCS800 pullouts and bases are the same with exception to the type of fuse, TPL-B, TPL-C or TPH the pullout will carry.
2. Plastic rated UL 94V0, 140°C RTI.

# Telpower® 70-600A: 170Vdc Fuses

## TPL

### Specifications

**Description:** DC power distribution fuses for use with Telpower 15100, 15200, TP158HC and TPHCS disconnect systems. For replacement of Cooper Bussmann UBO fuses a TPL-TA adapter kit is necessary.

**Dimensions:** See Dimensions illustrations.

### Ratings:

Volts: — 170Vdc  
Amps: — 70-800A  
IR: — 100kA

**Agency Information:** CE, UL Recognized Guide JFHR2, File E56412 Bellcore.

### Features and Benefits

- Current-limiting capability designed for DC power distribution systems
- Recognized branch circuit protection
- Complete system coordination capability
- Energy savings with low watts loss, low operating temperatures, and minimum I<sup>2</sup>t levels

### Typical Applications

- Telecommunications power circuit protection

### Catalog Numbers

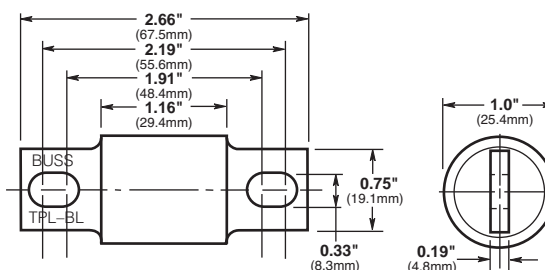
| Catalog Numbers | Amp Rating |
|-----------------|------------|
| TPL-BA          | 70         |
| TPL-BB          | 80         |
| TPL-BC          | 90         |
| TPL-BD          | 100        |
| TPL-BE          | 125        |
| TPL-BF          | 150        |
| TPL-BG          | 175        |
| TPL-BH          | 200        |
| TPL-BK          | 225        |
| TPL-BL          | 250        |
| TPL-CN          | 300        |
| TPL-CO          | 350        |
| TPL-CR          | 400        |
| TPL-CU          | 450        |
| TPL-CV          | 500        |
| TPL-CZ          | 600        |
| TPL-CZH         | 800        |

### Accessories

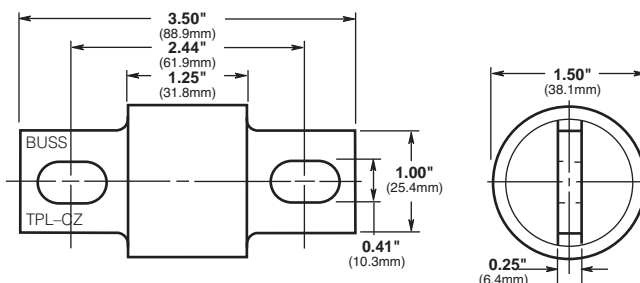
- Spare fuse holders: TPSFH-LB (for TPL-B fuses)  
TPSFH-LC (for TPL-C fuses)



### Dimensions - in (mm)



TPL-BA, TPL-BD, TPL-BF, TPL-BH, TPL-BK, and TPL-BL



TPL-CN, TPL-CR, TPL-CV, and TPL-CZ

# Telpower® 1-600A, 170Vdc Fuses

## TPN

### Specifications

**Description:** Current-limiting DC power distribution fuses. The TPN fuse series is dimensionally similar to Class R fuses making it easy to use standard Class R fuse blocks.

**Dimensions:** See Dimensions illustrations.

### Ratings:

Volts: — 170Vdc

Amps: — 1-600A

IR: — 100kA

**Agency Information:** UL Recognized, Guide JFHR2, File E56412.

### Features/Benefits

- Current-limiting capability designed for DC power distribution systems
- Recognized branch circuit protection
- Complete system coordination capability
- Energy savings with low watts loss, low operating temperatures, and minimum I<sup>2</sup>t levels

### Typical Applications

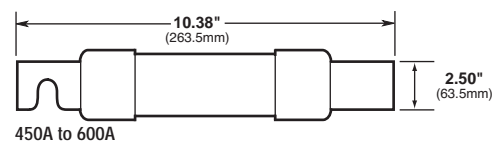
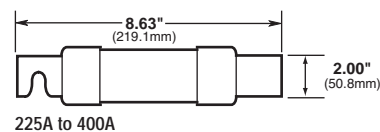
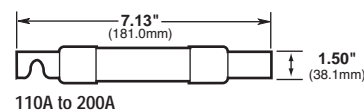
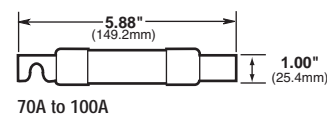
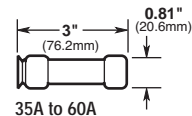
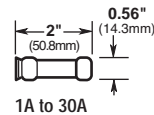
- Telecommunications power circuit protection

### Catalog Numbers (Amps)

|        |         |         |
|--------|---------|---------|
| TPN-1  | TPN-45  | TPN-200 |
| TPN-3  | TPN-50  | TPN-225 |
| TPN-5  | TPN-60  | TPN-250 |
| TPN-6  | TPN-70  | TPN-300 |
| TPN-10 | TPN-80  | TPN-350 |
| TPN-15 | TPN-90  | TPN-400 |
| TPN-20 | TPN-100 | TPN-450 |
| TPN-25 | TPN-110 | TPN-500 |
| TPN-30 | TPN-125 | TPN-600 |
| TPN-35 | TPN-150 |         |
| TPN-40 | TPN-175 |         |



### Dimensions - in (mm)



### Accessories

- Spare fuse holders:TPSFH-N30 (for TPN 1-30) TPSFH-N60 (for TPN 35-60)

### Recommended Class R Fuse Blocks

| Amps    | Poles | Catalog Number |
|---------|-------|----------------|
| 1-30    | 1     | R25030-1CR     |
| 1-30    | 2     | R25030-2CR     |
| 1-30    | 3     | R25030-3CR     |
| 35-60   | 1     | R25060-1CR     |
| 35-60   | 2     | R25060-2CR     |
| 35-60   | 3     | R25060-3CR     |
| 70-100  | 1     | R25100-1CR     |
| 70-100  | 2     | R25100-2CR     |
| 70-100  | 3     | R25100-3CR     |
| 110-200 | 1     | R25200-1CR     |
| 110-200 | 3     | R25200-3CR     |
| 225-400 | 1     | R25400-1CR     |
| 225-400 | 3     | R25400-3CR     |
| 450-600 | 1     | R25600-1CR     |
| 450-600 | 3     | R25600-3CR     |

# Indicating Fuses and Holders

## 70 Series Fuses

### Specifications

**Description:** Indicating type fuse.

### Ratings:

Volts: — 125Vac/300Vdc

Amps: — 1/10-10A

IR: — 1kA @ 300Vdc

**Agency Information:** CE, UL Recognized, Guide JDYX2, File E19180 Bellcore.

### Catalog Numbers

| Catalog Numbers       | Amp Rating | Color Code | Lucent Comcode Ref. No. | Code/ List No. |
|-----------------------|------------|------------|-------------------------|----------------|
| 70P-1/10A*            | 1/10       | Gray/Wh    | 100203413               | KS23751-L10    |
| 70R-1/100A*           | 1/100      | Red/Wh     | 101384550               | KS23751-L11    |
| 70E-1/100A*           | 1/100      | Yellow     | 100203363               | KS23751-L5     |
| 70X-3/10A             | 3/10       | Black      | —                       | —              |
| 70F-1/4A*             | 1/4        | Violet     | 100203371               | KS23751-L6     |
| 70K-1/4A*             | 1/4        | Violet/Wh  | 100203405               | KS23751-L9     |
| 70G-1/2A*             | 1/2        | Red        | 100203389               | KS23751-L7     |
| 70H-3/4A*             | 3/4        | Brown      | 100203397               | KS23751-L8     |
| 70I-1A                | 1          | Pink       | —                       | —              |
| 70A-1 1/2A*           | 1 1/2      | White      | 100203322               | KS23751-L1     |
| 70B-2A*               | 2          | Orange     | 100203330               | KS23751-L2     |
| 70C-3A*               | 3          | Blue       | 100203348               | KS23751-L3     |
| 70J-3 1/2A            | 3 1/2      | Black/Wh   | —                       | —              |
| 70D-5A*               | 5          | Grn/Blk    | 100203355               | KS23751-L4     |
| 70L-6A                | 6          | Grn/Wh     | —                       | —              |
| 70M-8A                | 8          | Brown/Wh   | —                       | —              |
| 70N-10A               | 10         | Violet/Yel | —                       | —              |
| GKB-10A               | 10         | Violet/Yel | —                       | —              |
| 72A Plastic CaseDummy | —          | —          | 100203421               | —              |
| 72B Blister PackDummy | —          | —          | 103757977               | —              |

\*Product designed to comply with Bellcore Technical Reference TR-TSY-000799 Issue 1, December 1988.



## 15087 Fuse Holder

### Specifications

**Description:** Fuse holder for 70 Series fuses.

### Ratings:

Volts: — 300Vdc

Amps: — 12A

**Agency Information:** CE, UL Recognized, Guide IZLT2, File E14853.

**Flammability Rating:** UL 94V0.

### Features and Benefits

- Panel mount fuse holder for 70 Type fuses supplied with two screws
- Remote alarm capability

### Typical Applications

- Telecommunications DC power circuit protection

### Catalog Number — 15087

### Accessories

**Description:** Optional color code eyelets used with fuse holder to indicate fuse amp rating.

### Eyelet Catalog Numbers

| Catalog Numbers | Amp Indication | Color Code    |
|-----------------|----------------|---------------|
| 1A1706-01       | 19/100         | Yellow        |
| 1A1706-02       | 2/10           | Black         |
| 1A1706-03       | 1/4            | Violet        |
| 1A1706-04       | 1/4            | Violet/White  |
| 1A1706-05       | 1/2            | Red           |
| 1A1706-06       | 3/4            | Brown         |
| 1A1706-07       | 1              | Pink          |
| 1A1706-08       | 1 1/2          | White         |
| 1A1706-09       | 2              | Orange        |
| 1A1706-10       | 3              | Blue          |
| 1A1706-11       | 5              | Green/Black   |
| 1A1706-12       | 6              | Green/White   |
| 1A1706-13       | 8              | Brown/White   |
| 1A1706-14       | 10             | Violet/Yellow |
| 1A1706-15       | 1/10           | Gray/White    |
| 1A1706-16       | 3 1/2          | Black/White   |
| 1A1706-17       | 15/100         | Red/White     |



# Indicating Fuses and Holders

## HLS, HLT, PCT

### Specifications

**Description:** Fuse holders for GMT Type indicating fuses.

**Poles:** 01 to 25.

### Ratings:

Volts: — 60Vdc/125Vac

### Agency Information:

CE, UL Recognized, Guide IZLT2, File E14853, 15A (60Vdc).

**Flammability Rating:** UL 94V0.

### Features and Benefits

- Multiple configurations provide application flexibility
- Compact size saves space

### Typical Applications

- Telecommunications DC power circuit protection

### Catalog Numbers

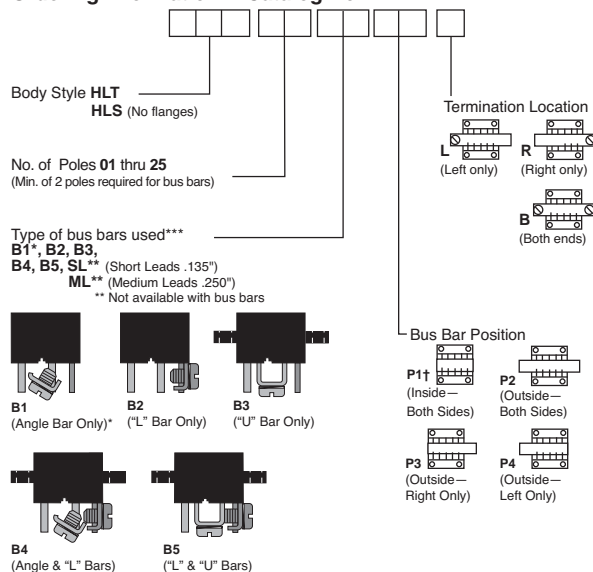
| Catalog Numbers | Poles            |
|-----------------|------------------|
| PCT             | 1                |
| HLS             | See Build-A-Code |
| HLT             | See Build-A-Code |



GMT - Dummy

GMT - A (Alarm)

### Multiple Fuseholders with bus bars Ordering Information— Catalog No.



\*Angle Bar mounts on common or center terminals only.  
\*\*SL Version is not available with bus bars.  
†Minimum of 4 Poles Required.  
\*\*\*.38 max. leads if not specified.

Data Sheet: 5010

## GMT

### Specifications

**Description:** Fast-acting fuses for use in HLT, HLS, and PCT fuse holders.

### Ratings:

Volts: — 60Vdc/125Vac

Amps: —  $\frac{1}{100}$ –15A

IR: — 450A@60Vdc

— 300A@125Vac

**Agency Information:** CE, UL Recognized, Guide JFHR2, File E56412.

**Flammability Rating:** UL 94V0.

### Features and Benefits

- Local and remote indication capability
- Color coded for easy amp rating identification

### Typical Applications

- Telecommunications DC power circuit protection

### Catalog Numbers

| Catalog Numbers         | Color Code   | Catalog Numbers        | Color Code   |
|-------------------------|--------------|------------------------|--------------|
| GMT- $\frac{1}{100}$ A  | Yellow       | GMT-3- $\frac{1}{2}$ A | White/Blue   |
| GMT- $\frac{1}{4}$ A    | Violet       | GMT-4A                 | White/Brown  |
| GMT- $\frac{1}{2}$ A    | White/Gray   | GMT-5A                 | Green        |
| GMT- $\frac{3}{4}$ A    | Red          | GMT-7- $\frac{1}{2}$ A | Black/White  |
| GMT- $\frac{65}{100}$ A | Black        | GMT-10A                | Red/White    |
| GMT- $\frac{1}{2}$ A    | Brown        | GMT-12A                | Yellow/Green |
| GMT-1A                  | Gray         | GMT-15A                | Red/Blue     |
| GMT-1- $\frac{1}{2}$ A  | White        | GMT-Dummy              | Gray Body    |
| GMT-1- $\frac{1}{2}$ A  | White/Yellow | GMT-X                  | Clear Cover  |
| GMT-2A                  | Orange       | GMT-Y                  | Clear Cover  |
| GMT-3A                  | Blue         |                        |              |

Some GMT sizes may be sold in bulk pack only.

### Accessories

- Spare fuse holder: Catalog Number TPSFH-T

## GMT-A

### Specifications

**Description:** Fast-acting fuse designed specifically for use in the Telpower® series 15800 fused disconnect switch (page 392).

**Agency Information:** The GMT-A has the same ratings and agency approvals as the standard GMT fuses as shown above.

### Catalog Numbers

| Catalog Number | Color Code |
|----------------|------------|
| GMT-A          | Yellow     |

Data Sheet: 5008



## Telpower Specialty Fuses

### 7 Type

#### Specifications

**Description:** Fiber tube, threaded ends. Typically used on wall type main distribution frames and central battery substations.

**Dimensions:** See Catalog Numbers table and Dimensions illustration.

#### Ratings:

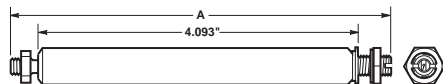
Amps: — 7A

**Agency Information:** CE

#### Catalog Numbers

| Catalog Numbers | Amp Rating | Lucent Comcode Ref. No. | Dimension A Length (in) |
|-----------------|------------|-------------------------|-------------------------|
| 7A-7            | 7          | 100863737               | 4.562                   |
| 7T-7            | 7          | 100202753               | 4.828                   |

#### Dimensions - in



### 11 Type

#### Specifications

**Description:** Fiber tube, threaded ends, identical to 7 Type except for vent slots in fiber tube.

**Dimensions:** See Dimensions illustration.

#### Ratings:

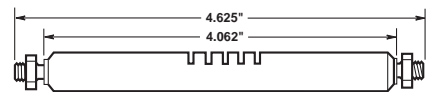
Amps: — 7A

**Agency Information:** CE

#### Catalog Number

| Catalog Number | Amp Rating | Lucent Comcode Ref. No. |
|----------------|------------|-------------------------|
| 11C-7          | 7          | 100863745               |

#### Dimensions - in



### 24 and WER Type

#### Specifications

**Description:** Flat, non-indicating visible link element mounted on 1 inch centers using either No. 6 or No. 10 screws.

**Dimensions:** See Dimensions illustration.

#### Ratings:

Volts: — 32Vdc (1/4, 1, 3 1/2, 8, 10A)

— 60Vdc (1/2, 3/4, 1 1/2, 2, 3, 4, 5A)

Amps: — 1/4-10A

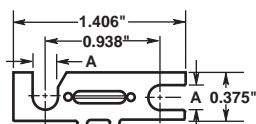
**Agency Information:** CE, UL Recognized File E56412.

#### Catalog Numbers

| Catalog Numbers | Amp Rating | DC Volts | Color Code | Lucent Comcode Ref. No. | A Length Inches |
|-----------------|------------|----------|------------|-------------------------|-----------------|
| WER-1/4         | 1/4        | 32       | —          | —                       | —               |
| 24E-1/2*        | 1/2        | 60       | Red        | 100202894               | 0.20            |
| 24D-3/4*        | 3/4        | 60       | Black      | 100202886               | 0.15            |
| WER-1           | 1          | 32       | —          | —                       | —               |
| 24G-1-1/8*      | 1 1/8      | 60       | White      | 100202910               | 0.20            |
| 24C-2*          | 2          | 60       | Orange     | 100202878               | 0.20            |
| 24B-3*          | 3          | 60       | Blue       | 100202852               | 0.15            |
| WER-3-1/2       | 3 1/2      | 32       | —          | —                       | —               |
| 24B-4*          | 4          | 60       | Yellow     | 100202860               | 0.15            |
| 24F-5*          | 5          | 60       | Green      | 100202902               | 0.15            |
| WER-8           | 8          | 32       | —          | —                       | —               |
| WER-10          | 10         | 32       | —          | —                       | —               |
| 64A-Dummy       | —          | —        | —          | 100203280               | —               |

\*Designed to comply with Bellcore Technical Reference TR-TSY-000799 Issue 1, Dec. 1988.

#### Dimensions - in



### 74 Type

#### Specifications

**Description:** Fast-acting 0.281" x 1.25" cylindrical fuse designed to comply with Lucent specification KS23753. High current companion to 70 Type Fuse.

**Dimensions:** See Dimensions illustration.

#### Ratings:

Volts: — 60Vdc

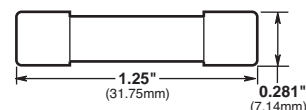
Amps: — 1 1/4-20A

**Agency Information:** CE, UL Recognized File E19180.

#### Catalog Numbers

| Catalog Numbers | Amp Rating | Lucent Comcode Ref. No. | Code/List No. |
|-----------------|------------|-------------------------|---------------|
| 74A-1-1/4       | 1 1/4      | 102630290               | KS23753-L1    |
| 74G-2           | 2          | 103064952               | KS23753-L7    |
| 74B-3           | 3          | 102630308               | KS23753-L2    |
| 74H-4           | 4          | 103264669               | KS23753-L8    |
| 74C-5           | 5          | 102630316               | KS23753-L3    |
| 74J-7-1/2       | 7 1/2      | 103228425               | KS23753-L9    |
| 74D-10          | 10         | 102630324               | KS23753-L4    |
| 74E-15          | 15         | 102630332               | KS23753-L5    |
| 74F-20          | 20         | 102630340               | KS23753-L6    |

#### Dimensions - in (mm)



# Telpower Specialty Fuses

## 75 Type

### Specifications

**Description:** Cylindrical with leads, designed to provide protection against currents resulting from the application of foreign voltages. Application for data sets and telephones.

**Dimensions:** See Dimensions illustration.

### Ratings:

Volts: — 135Vac/220Vdc (440Vdc@0.007A)

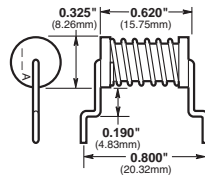
Amps: — 0.007-0.230A

**Agency Information:** CE

### Catalog Numbers

| Catalog Numbers | Amp Rating | Lucent Comcode Ref. No. | Code/ List No. |
|-----------------|------------|-------------------------|----------------|
| 75C             | 0.007      | 103260816               | KS23825-L3     |
| 75F             | 0.063      | 104172861               | KS23825-L6     |
| 75B             | 0.115      | 102732112               | KS23825-L2     |
| 75D             | 0.129      | 104013180               | KS23825-L4     |
| 75A             | 0.200      | 102660008               | KS23825-L1     |
| 75E             | 0.230      | 104015292               | KS23825-L5     |

### Dimensions - in (mm)



## 76 Type

### Specifications

**Description:** Cylindrical with leads, designed to provide protection against currents resulting from the application of foreign voltages. Application for data sets and telephones.

**Dimensions:** See Dimensions illustration.

### Ratings:

Volts: — 135Vac/440Vdc

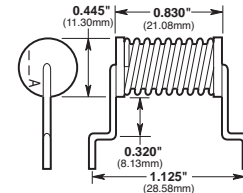
Amps: — 0.012-0.412A

**Agency Information:** CE

### Catalog Numbers

| Catalog Numbers | Amp Rating | Lucent Comcode Ref. No. | Code/ List No. |
|-----------------|------------|-------------------------|----------------|
| 76D             | 0.012      | 103798245               | KS23825-L10    |
| 76B             | 0.191      | 102965688               | KS23825-L8     |
| 76A             | 0.231      | 102810181               | KS23825-L7     |
| 76C             | 0.412      | 103656625               | KS23825-L9     |

### Dimensions - in (mm)



## 80 Type

### Specifications

**Description:** A fuse designed for high reliability applications where high ambient temperatures, low circuit voltages, low power dissipation and low contact resistance are prime considerations. The 80 Type is a visual indicating fuse with remote electrical alarm capability. UL Recognized, Guide JDYX2, File E19180.

**Dimensions:** See Dimensions illustrations.

### Ratings:

Volts: — 160Vdc

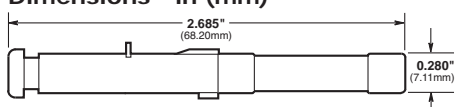
Amps: — 1/2-5A

**Agency Information:** CE, UL Recognized File E19180.

### Catalog Numbers

| Catalog Numbers | Amp Rating | Color Code | Lucent Comcode Ref. No. | Code/ List No. |
|-----------------|------------|------------|-------------------------|----------------|
| 80G-1/2         | 1/2        | Red        | 103839916               | KS23824-L6     |
| 80M-1-1/2       | 1 1/2      | White      | 408078657               | KS23824-L8     |
| 80B-2           | 2          | Orange     | 103752150               | KS23824-L2     |
| 80C-3           | 3          | Blue       | 103752168               | KS23824-L3     |
| 80D-5           | 5          | Green      | 103800637               | KS23824-L4     |

### Dimensions - in (mm)



## 81 Type

### Specifications

**Description:** Cylindrical, fast-acting, non-indicating high current companion to the 80 Type.

**Dimensions:** See Dimensions illustration.

### Ratings:

Volts: — 65Vdc

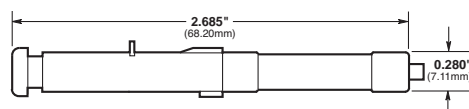
Amps: — 7 1/2-12A

**Agency Information:** CE, UL Recognized, Guide JDYX2, File E19180.

### Catalog Numbers

| Catalog Numbers | Amp Rating | Color Code | Lucent Comcode Ref. No. | Code/ List No. |
|-----------------|------------|------------|-------------------------|----------------|
| 81B-7-1/2       | 7 1/2      | Gray       | 103828141               | KS23824-L12    |
| 81A-10          | 10         | Yellow     | 103752176               | KS23824-L11    |
| 81C-12          | 12         | Lt Blue    | 104391842               | KS23824-L13    |

### Dimensions - in (mm)



# Filtered Terminal Blocks

## F38 Series

### Specifications

**Description:** Terminal blocks for filtering line power in telecommunications applications.

### Ratings:

Volts: — 240Vac/300Vdc

Amps: — 30A

**Center Spacing:** 0.437" or 7/16" (11.1mm).

**Wire Range:** # 10-22 AWG Cu.

**Screw Size:** # 8-32 (# 6-32 available, consult factory).

**Torque Rating:** 15 lb-in.

**Operating Temperature:** -55°C to +105°C.

**Capacitance:** 1,000 pF to 5,000 pF in either C or Pi Schematic.

**Dielectric Withstanding:** 1000Vac/1700Vdc.

**DC Resistance:** 0.01 Ω max.

**Agency Information:** UL/CSA, CE Certified.

**Flammability Rating:** UL 94V0.



### Insertion Loss for 2,500 pF Pi Schematic

#### Typical Insertion Loss\* (dB) in 50 Ω Circuit

|          |       |
|----------|-------|
| 30MHz:   | 42 dB |
| 50MHz:   | 45 dB |
| 100MHz:  | 50 dB |
| 300MHz:  | 68 dB |
| 1000MHz: | 70 dB |

\* For other capacitance insertion loss, consult factory.

### Features and Benefits

- Rugged integrated construction of filtering elements around a solid brass pin provides excellent EMI/RFI filtering with high insertion loss for EMI/RFI filtering of AC and DC power and control lines
- 2 to 8 terminals standard (up to 16-poles available) with options for straight lead, male or female quick-connect

### Typical Applications

- Cost-effective EMI solution for industrial interconnection filtering

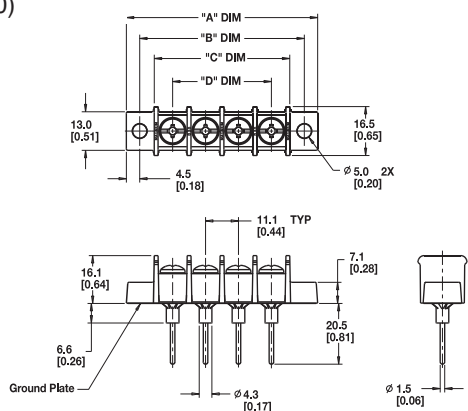
### Dimensions - in

| Poles* | Front Mount<br>A | Rear Mount<br>A | B    | C    | D    |
|--------|------------------|-----------------|------|------|------|
| 2      | 1.67             | 1.88            | 1.31 | 0.93 | 0.44 |
| 3      | 2.10             | 2.32            | 1.75 | 1.37 | 0.88 |
| 4      | 2.54             | 2.76            | 2.19 | 1.81 | 1.31 |
| 5      | 2.98             | 3.19            | 2.63 | 2.25 | 1.75 |
| 6      | 3.41             | 3.63            | 3.06 | 2.68 | 2.19 |
| 7      | 3.85             | 4.07            | 3.50 | 3.12 | 2.62 |
| 8      | 4.29             | 4.51            | 3.94 | 3.56 | 3.06 |

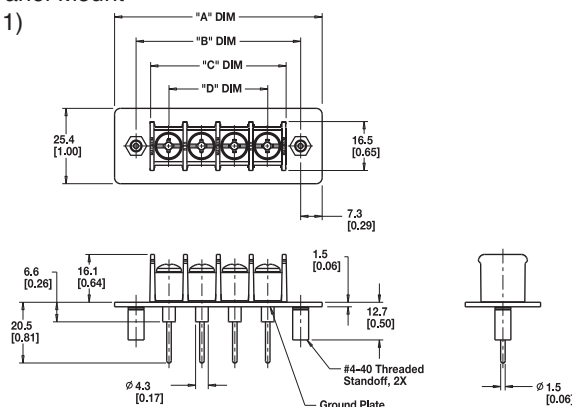
1" = 25.4mm.

\* Note: Available up to 16-poles. Consult factory.

### Front Panel Mount (Code 0)



### Rear Panel Mount (Code 1)



### Catalog Number Build-A-Code

| Series | Terminal Style   | Mounting  | # of Poles                         | Screw Options  | Filter Options  | Capacitance  |
|--------|--|---|------------------------------------|--|---|--|
| F38    | <input type="checkbox"/> 0 = Straight lead<br><input type="checkbox"/> 1 = 0.187" Quick connect (male)<br><input type="checkbox"/> 2 = 0.187" Quick connect (female)<br><input type="checkbox"/> 3 = 0.250" Quick connect (male)<br><input type="checkbox"/> 4 = 0.250" Quick connect (female) | <input type="checkbox"/> 0 = Front panel mount with mount ends<br><input type="checkbox"/> 1 = Rear panel mount with #4-40 threaded inserts | <input type="checkbox"/> 02 to 08* | <input type="checkbox"/> Blank = #8-32, steel, zinc-plated phillslot BHMS (standard)<br><input type="checkbox"/> 04 = #8-32, Brass, nickel-plated phillslot BHMS<br><input type="checkbox"/> 92 = #8-32, Steel, zinc-plated slotted BHMS<br><input type="checkbox"/> 94 = #8-32, Brass, nickel-plated slotted BHMS | <input type="checkbox"/> C = C Filter<br><input type="checkbox"/> P = Pi Filter | <input type="checkbox"/> 1.0 = 1,000 pF +100%-0%<br><input type="checkbox"/> 2.5 = 2,500 pF +100%-0%<br><input type="checkbox"/> 5.0 = 5,000 pF +100%-0% |

\* Note: Standard is 02-08 poles. Available up to 16-poles. Consult Cooper Bussmann for availability. Special electrical/mechanical configurations are available upon request.

# Power Feed Through Terminal Blocks

## Series C7021

### Specifications

**Description:** Power feed through terminal block with two rows 1/4-20 studs capable of accommodating the industry standard two-hole compression lugs on both studs in parallel.



### Ratings:

Volts: — 300V

Amps: — 115/175A\* per pole

**Center Spacing:** 0.690" (17.5mm).

**Wire Range:** AWG #2/0-8.

**Poles:** 2- to 6-poles.

**Bolt Hole Spacing:** 0.625" or 5/8" (15.88mm).

**Stud:** Standard 1/4-20 stud (tin-plated brass) or optional M6 stud.

**Mounting:** #6 thread cutting screws (not included) or optional mounting ears.

**Torque Rating:** 36 lb-in.

**Operating Temperature:** 130°C.

**Agency Information:** UL/CSA; CE Certified.

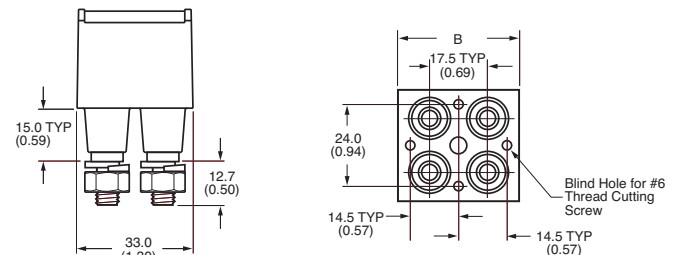
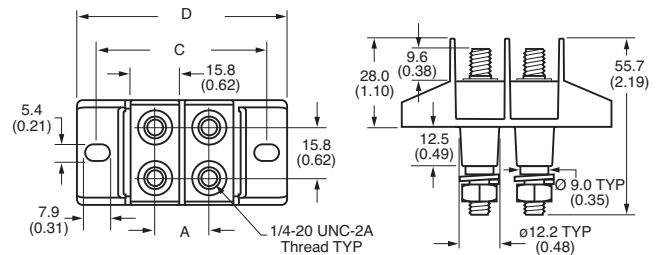
\*175 achieved using both studs in parallel, 115A using a single stud per line.

### Typical Applications

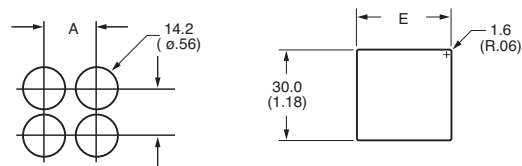
- Applications requiring up to 175A utilizing a 2-hole compression lug on 5/8" centers
- Input/output block for telecommunications power panels
- Use to eliminate busbars

### Dimensions - in (mm)

| Catalog Numbers | A           | B            | C            | D            | E            |
|-----------------|-------------|--------------|--------------|--------------|--------------|
| C7021-01-X      |             |              |              |              |              |
| C7021-02-X      | 17.5 (0.69) | -            | 54.4 (2.14)  | 67.3 (2.65)  | 31.8 (1.25)  |
| C7021-03-X      | 34.9 (1.37) | -            | 70.9 (2.83)  | 84.8 (3.34)  | 49.2 (1.94)  |
| C7021-04-X      | 52.3 (2.06) | -            | 89.3 (3.52)  | 102.2 (4.02) | 66.7 (2.63)  |
| C7021-05-X      | 69.8 (2.75) | -            | 106.8 (4.20) | 119.7 (4.71) | 84.2 (3.31)  |
| C7021-06-X      | 87.2 (3.44) | -            | 124.2 (4.89) | 134.1 (5.40) | 101.7 (4.00) |
| C7021-01N-X     |             |              |              |              |              |
| C7021-02N-X     | 17.5 (0.69) | 36.1 (1.42)  | -            | -            | 31.8 (1.25)  |
| C7021-03N-X     | 34.9 (0.69) | 53.5 (2.11)  | -            | -            | 49.2 (1.94)  |
| C7021-04N-X     | 52.3 (2.06) | 71.0 (2.80)  | -            | -            | 66.7 (2.63)  |
| C7021-05N-X     | 69.8 (2.75) | 88.4 (3.48)  | -            | -            | 84.2 (3.31)  |
| C7021-06N-X     | 87.2 (3.44) | 105.9 (4.17) | -            | -            | 101.7 (4.00) |



### Panel Cutouts



### Catalog Number Build-A-Code

| Series | Poles  | Mount Ends                              | Studs   | Hardware  |
|--------|--|---|---|---|
| C7021  | - <input type="checkbox"/> <input type="checkbox"/>  | <input type="checkbox"/>                | <input type="checkbox"/> <input type="checkbox"/> | - <input type="checkbox"/>  |
|        | 01 = 1-Pole (2 studs)<br>02 = 2-Pole (4 studs)<br>03 = 3-Pole (6 studs)<br>04 = 4-Pole (8 studs)<br>05 = 5-Pole (10 studs)<br>06 = 6-Pole (12 studs) | Blank = Mount ends<br>N = No mount ends | Blank = Standard<br>M6 = M6 Studs                 | Blank = No hardware<br>0 = Bulk pack, one set<br>1 = Bulk pack, two sets<br>2 = Assembled, bottom<br>3 = Assembled, top<br>4 = Assembled, both sets |

# Power Feed Through Terminal Blocks

## Series C7024

### Specifications

**Description:** A power feed through terminal block with two rows of ¼-28 studs capable of accommodating the industry standard two-hole compression lugs on ¾" centers.

**Dimensions:** See Dimensions illustration.

### Ratings:

Volts: — 600V

Amps: — 115A per pole

**Center Spacing:** 0.75" (19.1mm).

**Wire Range:** #2-8 AWG.

**Poles:** 1 to 12.

**Bolt Hole Spacing:** 0.75" (19.1mm).

**Stud:** Standard ¼-28 stud (tin-plated bronze).

**Torque Rating:** 36 lb-in.

**Operating Temperature:** 130°C.

**Agency Information:** UL/C-UL, CSA; CE Certified.

**Flammability Rating:** UL 94V0.

### Catalog Numbers

| Catalog Number | Poles | "A" Dimension- mm (in)<br>±0.4 (±0.02) | "B" Dimension- mm (in)<br>±0.4 (±0.02) |
|----------------|-------|--|--|
| C7024-01       | 01    | 21.6 (0.85)                            | -                                      |
| C7024-02       | 02    | 40.6 (1.60)                            | 19.05 ±0.08 (0.750 ±0.003)             |
| C7024-03       | 03    | 59.7 (2.35)                            | 38.10 (1.500)                          |
| C7024-04       | 04    | 78.7 (3.10)                            | 57.15 ±0.26 (2.250 ±0.010)             |
| C7024-05       | 05    | 97.8 (3.85)                            | 76.2 (3.00)                            |
| C7024-06       | 06    | 116.8 (4.60)                           | 95.25 ±0.26 (3.750 ±0.010)             |
| C7024-07       | 07    | 135.9 (5.35)                           | 114.30 ±0.38 (5.250 ±0.015)            |
| C7024-08       | 08    | 154.9 (6.10)                           | 133.35 ±0.38 (5.25 ±0.015)             |
| C7024-09       | 09    | 174.0 (6.85)                           | 152.40 ±0.38 (6.00 ±0.015)             |
| C7024-10       | 10    | 193.0 (7.60)                           | 171.45 ±0.38 (6.750 ±0.015)            |
| C7024-11       | 11    | 212.1 (8.35)                           | 190.50 ±0.38 (7.500 ±0.015)            |
| C7024-12       | 12    | 231.1 (9.10)                           | 209.55 ±0.38 (8.250 ±0.015)            |

### Catalog Number Build-A-Code

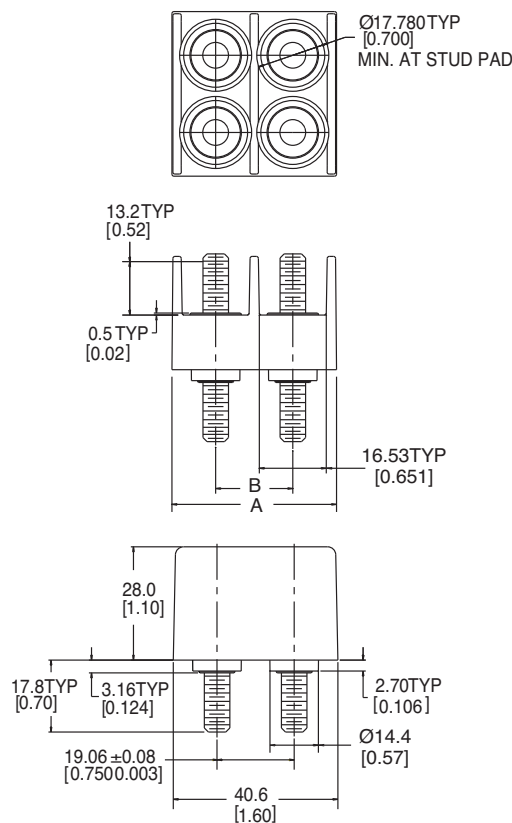
| Series | Poles |
|--------|-------|
| C7024  | 01-12 |



### Typical Applications

- Applications requiring up to 115A utilizing a 2-hole compression lug on ¾" centers
- Ideal as an input/output block for telecommunications power panels
- Use to eliminate busbars

### Dimensions - mm (in)





# Mouser Electronics

Authorized Distributor

Click to View Pricing, Inventory, Delivery & Lifecycle Information:

Eaton:

[80C-3](#) [74H-4](#) [74B-3](#) [74D-10](#) [74A-1-1/4](#) [74G-2](#) [74E-15](#) [80D-5](#) [80M-1-1/3](#) [80G-1/2](#) [74J-7-1/2](#) [76B](#) [76C](#) [74C-5](#)  
[76D](#) [74F-20](#)