

# Telpower® DC Power Distribution Fuses

TPA

170 Volts, DC, 3-50 Amps



CATALOG SYMBOL: TPA and TPA-B

DC POWER DISTRIBUTION FUSES

AMPERE RATING: 3-50 Amps

VOLTAGE RATING: TPA - 170 VOLTS DC; TPA-B - 65V DC

INTERRUPTING RATINGS: TPA, 100 kA; TPA-B, 20kA

CONSTRUCTION:

- SILVER-PLATED BRASS FERRULES AND INDICATOR PIN.
- GLASS MELAMINE TUBE.

AGENCY APPROVALS:

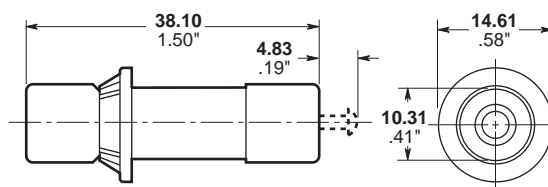
U.L. RECOGNIZED (GUIDE # JFHR2, FILE E56412)

CSA CERTIFIED, CLASS 1422-30, FILE 53787

## Catalog Numbers

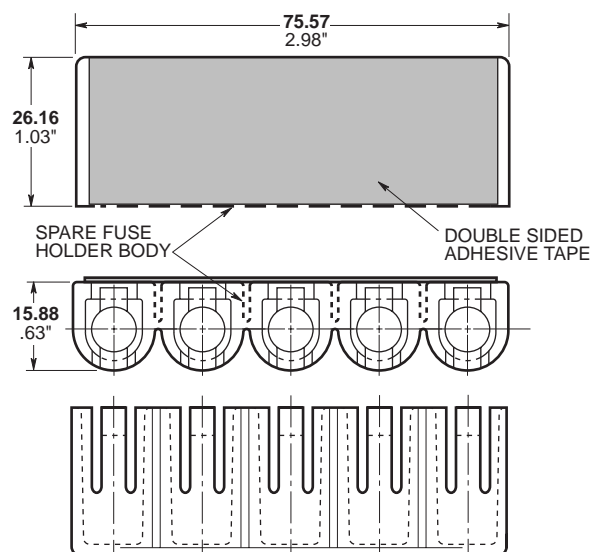
TPA-3	TPA-25	TPA-B-20
TPA-5	TPA-30	TPA-B-25
TPA-10	TPA-40	
TPA-15	TPA-50	
TPA-20		

## Dimensional Data – TPA Fuses



- Recognized branch circuit protection.
- Current-limiting capability.
- Complete system coordination capability.
- Use with Telpower **TP15914** and **TP15900-4** Disconnect Switches.
- Five position spare fuseholder available – **Part No. 5TPH.**

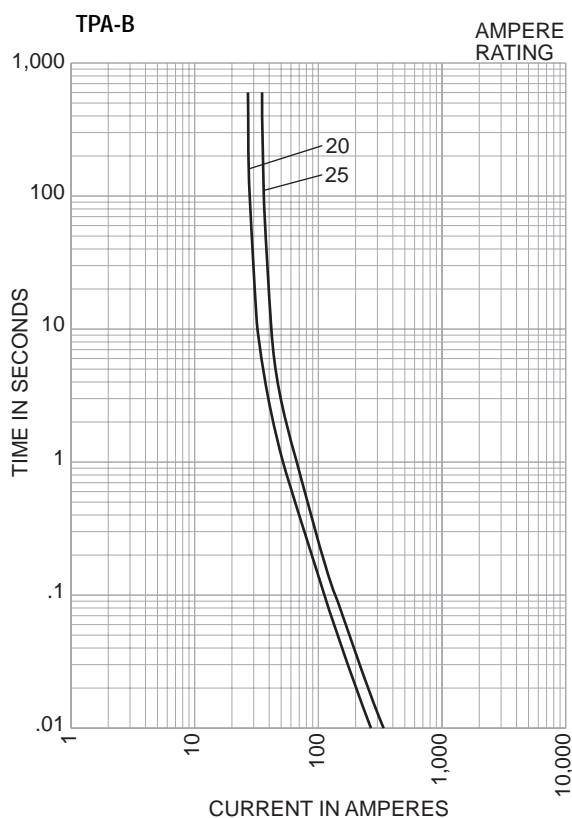
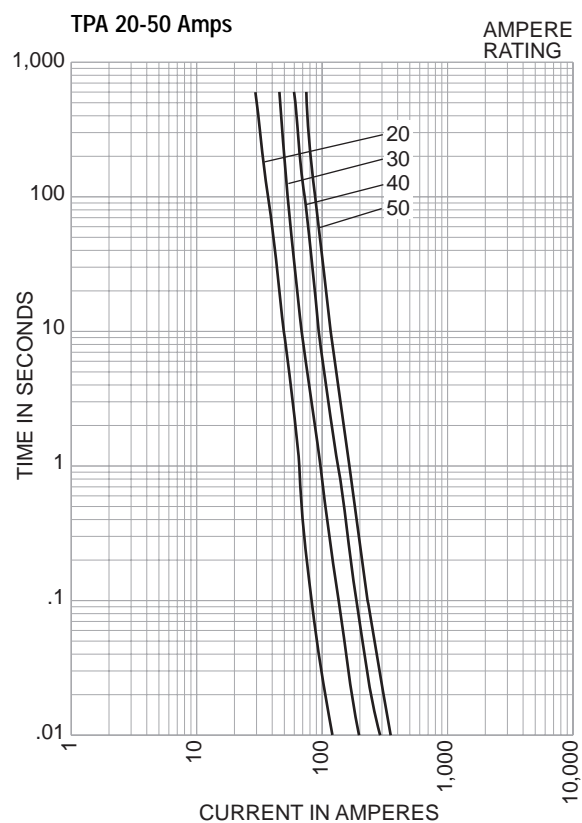
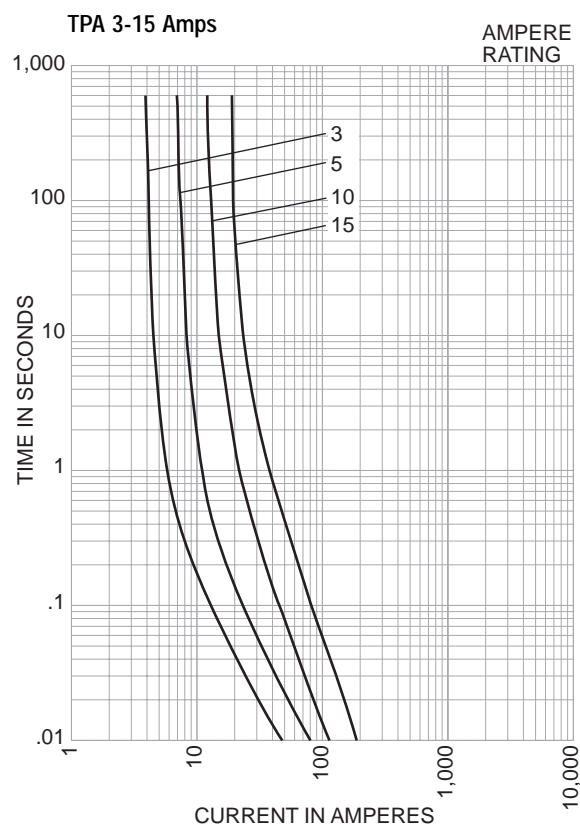
## Five Position Spare Fuseholder – 5TPH



# Telpower® DC Power Distribution Fuses

## 170 Volts DC, 3-50 Amps

TPA



The only controlled copy of this BIF document is the electronic read-only version located on the Bussmann Network Drive. All other copies of this BIF document are by definition uncontrolled. This bulletin is intended to clearly present comprehensive product data and provide technical information that will help the end user with design applications. Bussmann reserves the right, without notice, to change design or construction of any products and to discontinue or limit distribution of any products. Bussmann also reserves the right to change or update, without notice, any technical information contained in this bulletin. Once a product has been selected, it should be tested by the user in all possible applications.

# Mouser Electronics

Authorized Distributor

Click to View Pricing, Inventory, Delivery & Lifecycle Information:

[Eaton:](#)

[TPA-10](#) [TPA-50](#) [TPA-5](#) [TPA-20](#) [TPA-25](#) [TPA-3](#)