

M15E M.2 5GbE



The future of high-speed networking

Overview

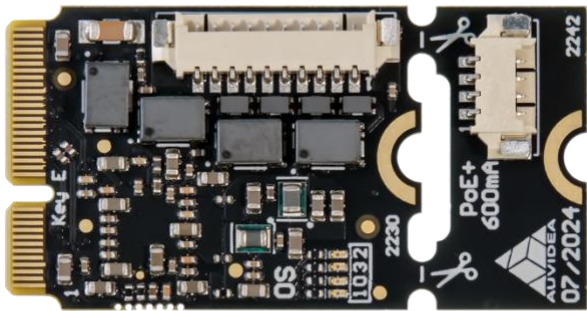
This tiny M.2 key E (2230/2242) add-on card is designed to seamlessly elevate your cameras performance and to enable the use of 5 GigE Vision cameras.

Features

- Based on Realtek RTL8126
- Realtek driver tested with the NVIDIA compute modules
- Designed and manufactured in Germany

Technical specification

Feature	Description
Module compatibility	Orin NX/AGX and more
Connector	M.2 key E 2230/2242
Interface	PCIe x1 (no USB)
PicoBlade (10 pin)	For RJ45 or X-Code
Ethernet	12 pin FPC
Power requirements	< 1.5W
PoE+ (802.3at Type 2) PD or PSE	Optional with use of external Module (4 pin JST-GH)
Size	22mm x 30/42mm
Driver	Realtek Driver for Linux, Windows and more
Model number	38677



M15E top side



M15E bottom side

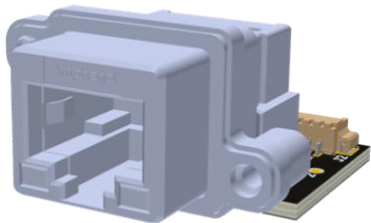


Variations

SKU	Part
70828	M15E M.2 GbE
70828-Kit	M15E Kit

Accessories

SKU	Part
70436	Amphenol IP67 RJ45 Ethernet adapter
70927	BE323 RJ45 Ethernet adapter
38577-M12	BS441 M12 X-Code Ethernet adapter



Amphenol IP67 RJ45 adapter



BE323 RJ45 adapter



BS441 M12 X-Code adapter



5 GigaBit Ethernet

M15E M.2 5GbE Kit



M15E Kit includes

SKU	Part
70828	M15E M.2 GbE
70927	BE323 Ethernet adapter board
42458-150	Ethernet cable (1:1)

Mouser Electronics

Authorized Distributor

Click to View Pricing, Inventory, Delivery & Lifecycle Information:

[Auvideo:](#)

[70828-Kit](#)