

ARTESYN NPS20-M SERIES

40 W



Advanced Energy's Artesyn NPS20-M series of open-frame AC-DC power supplies features ITE and medical safety approvals. The series comprises five single output models, offering voltages of 5 V, 12 V, 15 V, 24 V or 48 V. Each model has a typical full load efficiency of 87%. These power supplies are primarily intended for use in information technology equipment (ITE) and light industrial systems, as well as for equipment intended for non-patient contact and non-patient critical use in low power medical, dental and laboratory applications.

SPECIAL FEATURES

- Medical and ITE safety approvals
- Universal input
- Less than 1U high
- 2" x 4" footprint
- Remote sense
- Overload and short circuit protection
- Adjustable output voltage
- High efficiency
- High MTBF
- Built in EMI filter (CISPR 22 Class B)
- International Efficiency Level V, Energy Star 2.0 (NPS22-M < 38 W output)
- Less than 300 mW no-load power consumption
- 0°C to +80°C operation
- Input power < 49 W

- Complies with EN61000-3-2
- Class I approved
- Class II approved (with Class A EMI)
- LPX100 enclosure kit available
- Dual AC fuses
- RoHS compliant

SAFETY

- | | |
|---------|------------------------|
| ■ TUV | 62368-1, 60601-1 |
| ■ UL | 60950-1, 60601-1 |
| ■ CSA | 60950-1, 60601-1 |
| ■ NEMKO | 62368-1, 60601-1 |
| ■ CB | Certificate and report |
| ■ CE | Mark (LVD) |
| ■ CQC | Mark |
| ■ UKCA | Mark |

AT A GLANCE

Total Power

25 to 40 W

Input Voltage

90 to 264 VAC
127 to 300 VDC

of Outputs

Single



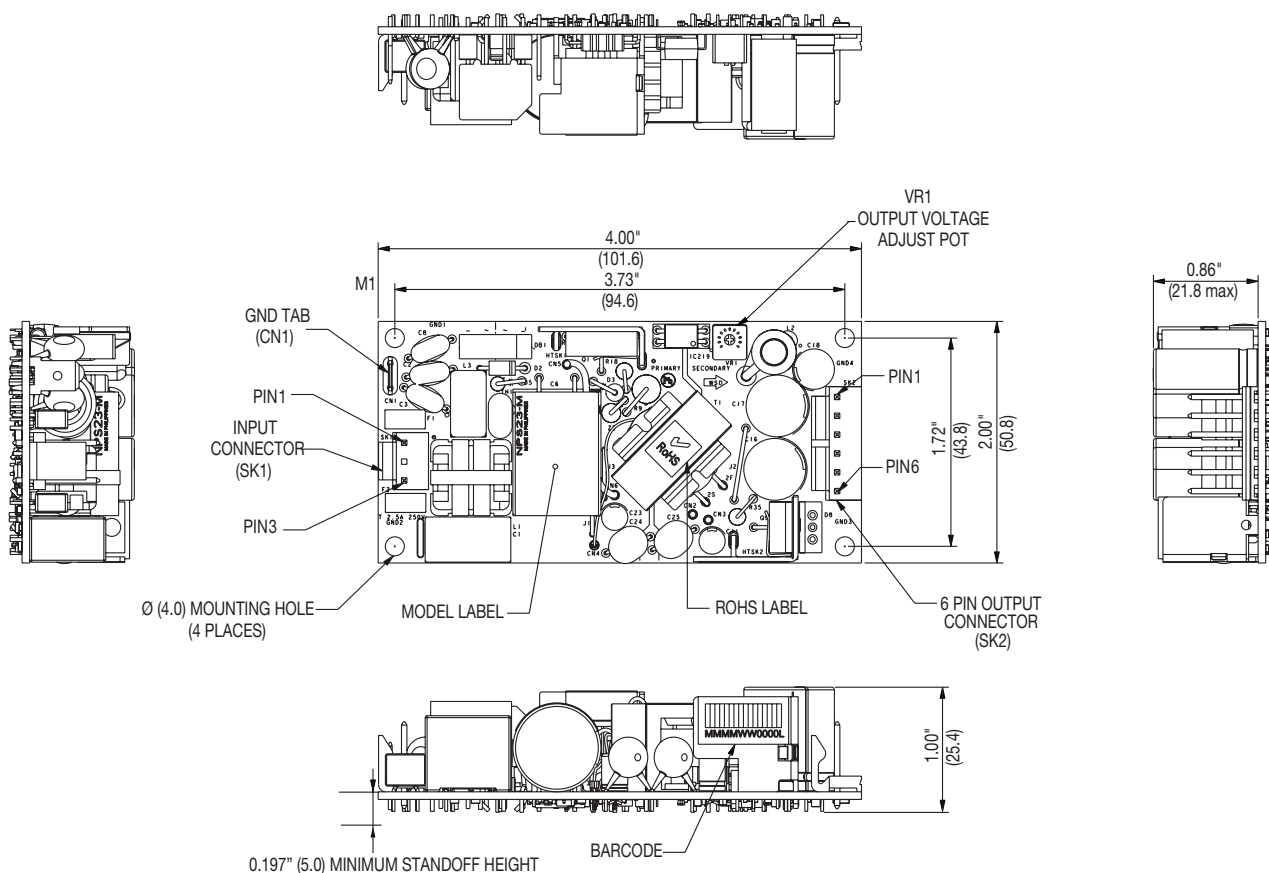
ELECTRICAL SPECIFICATIONS

Input	
Input Voltage	90 to 264 VAC (wide range) or 127 to 300 VDC
Frequency	47 to 440 Hz
Inrush Current	< 50 A peak @ 230 VAC, cold start @ 25°C
Input Power	< 49 W
Efficiency	87% average (as per Energy Star 2.0 standard) (NPS22-M, 80%)
EMI/RFI	FCC Class B conducted, CISPR 22 Class B conducted, EN55022 Class B conducted, VDE0878PT3 Class B conducted
Safety Ground Leakage Current	275 μ A @ 50/60 Hz, 264 VAC input
Output	
Maximum Power	25 W for convection. 40 W with 200 LFM forced air
Adjustment Range	\pm 20% minimum (-10%, +20% for NPS22-M)
Hold-up Time	10/20 ms (115/230 VAC input line)
Overload Protection	Short circuit protection on all outputs. Case overload protected @ 110% to 160% of normal rating, (110% to 190% for NPS28-M)
Overvoltage Protection	130% to 150% of nominal output
Remote Sense	Compensated for 0.5 V lead drop max. Will operate without remote sense connected. Reverse connection protected.

ENVIRONMENTAL SPECIFICATIONS

Operating Temperature	0°C to 50°C ambient derate each output at 2.5% per degree from 50°C to 80°C, -20°C start up
Storage Temperature	-45°C to +85°C
Electromagnetic Susceptibility	Designed to meet EN61000-4; -2, -3, -4, -5, -6, -8, -11 Level 3
Humidity	Operating, non-condensing 10% to 90% RH
Vibration	IEC68-2-6 to the levels of IEC721-3-2
MTBF Demonstrated	> 550,000 hours at full load and 25°C ambient conditions

MECHANICAL DRAWING



ORDERING INFORMATION

Model Number	Output Voltage	Minimum Load	Maximum Load with Convection Cooling	Maximum Load with 200LFM Forced Air	Peak Load ¹	Regulation ²	Ripple P/P (PARD) ³
NPS22-M	5 V	0 A	5 A	8 A	9 A	±2%	50 mV
NPS23-M	12 V	0 A	2.1 A	3.3 A	4 A	± 2%	120 mV
NPS24-M	15 V	0 A	1.7 A	2.7 A	3 A	± 2%	150 mV
NPS25-M	24 V	0 A	1 A	1.8 A	2 A	± 2%	240 mV
NPS28-M	48 V	0 A	0.52 A	0.84 A	1 A	± 2%	480 mV

1. Peak current lasting < 15 seconds with a maximum 10% duty cycle.

2. At 25°C including initial tolerance, line voltage, load currents and output voltages adjusted to factory settings.

3. Peak-to-peak with 20 MHz bandwidth and 10 µF (tantalum capacitor) in parallel with a 0.1 µF capacitor at rated line voltage and load ranges.

4. This product is a component power supply and is only for inclusion by professional installers within other equipment and must not be operated as a standalone product. EMC compliance to appropriate standards must be verified at the system level. This product is for sale to OEMs and system integrators, including through distribution channels. It is not intended for sale to end users.

PIN ASSIGNMENTS

Connector	NPS22-M	NPS23-M	NPS24-M	NPS25-M	NPS28-M
SK1-1	Line	Line	Line	Line	Line
SK1-3	Neutral	Neutral	Neutral	Neutral	Neutral
CN1	Ground	Ground	Ground	Ground	Ground
SK2-1	+5 V	+12 V	+15 V	+24 V	+48 V
SK2-2	+5 V	+12 V	+15 V	+24 V	+48 V
SK2-3	Common	Common	Common	Common	Common
SK2-4	Common	Common	Common	Common	Common
SK2-5	-Sense	-Sense	-Sense	-Sense	-Sense
SK2-6	+Sense	+Sense	+Sense	+Sense	+Sense

MATING CONNECTORS

AC Input	Molex 09-50-8031 (USA) 09-91-0300 (UK) PINS: 08-52-0113
DC Outputs	Molex 09-50-8061 (USA) 09-93-0600 (UK) PINS: 08-52-0113
Artesyn Embedded Power Connector Kit #70-841-006, includes all of the above	

Notes:

- Specifications subject to change without notice.
- All dimensions in inches (mm), tolerance is ±0.02" (±0.5 mm)
- Mounting holes M1 and M2 should be grounded for EMI purposes.
- Mounting hole M1 is safety ground connection.
- Specifications are for convection rating at factory settings with 115 VAC input, 25°C unless otherwise stated.
- For DC input an external DC safety rated fuse must be used.
- Warranty: 2 year
- Weight: 0.22 lbs/0.10 kg



For international contact information,
visit advancedenergy.com.

powersales@aei.com (Sales Support)
productsupport.ep@aei.com (Technical Support)
+1 888 412 7832

ABOUT ADVANCED ENERGY

Advanced Energy (AE) has devoted more than three decades to perfecting power for its global customers. AE designs and manufactures highly engineered, precision power conversion, measurement and control solutions for mission-critical applications and processes.

Our products enable customer innovation in complex applications for a wide range of industries including semiconductor equipment, industrial, manufacturing, telecommunications, data center computing, and medical. With deep applications know-how and responsive service and support across the globe, we build collaborative partnerships to meet rapid technological developments, propel growth for our customers, and innovate the future of power.

PRECISION | POWER | PERFORMANCE | TRUST

Specifications are subject to change without notice. Not responsible for errors or omissions. ©2023 Advanced Energy Industries, Inc. All rights reserved. Advanced Energy®, AE® and Artesyn™ are U.S. trademarks of Advanced Energy Industries, Inc.

Mouser Electronics

Authorized Distributor

Click to View Pricing, Inventory, Delivery & Lifecycle Information:

[Advanced Energy:](#)

[NPS22-M](#) [NPS23-M](#) [NPS24-M](#) [NPS25-M](#) [NPS28-M](#) [70-841-006](#)