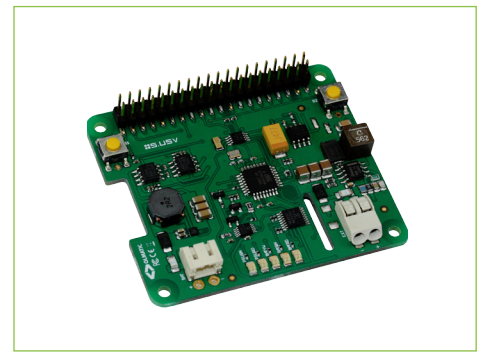


S.USV MOBILE - INTELLIGENT ENERGY MANAGEMENT MODULES/POWERBANK WITH UPS FUNCTION

FOR SINGLE BOARD COMPUTERS AND EMBEDDED SYSTEMS
START AND OPERATE PURELY VIA RECHARGEABLE BATTERY



PRODUCT DESCRIPTION

Supply your single-board computer or embedded system mobile and variable via the S.USV mobile modules and design your personal battery-powered systems including uninterruptible power supply. Thanks to this intelligent power bank, you can start and operate the SBC or embedded system purely via rechargeable battery - your battery-operated portable system.

The modules are fully functional Plug & Play solutions. The implemented monitoring system carries out a continuous review of all relevant performance data in order to safely shut down the systems in case of misconduct and thus prevent data loss. For example, if the power supply to the systems falls below a specifically defined voltage threshold, the S.USV modules automatically switch to battery mode and maintain the functionality of the systems for a user-settable period of time, thereby bridge the power sink or shut down the systems safely in the event of a long-term power outage.

Through the detailed analysis of the collected performance data, the system can be operated highly efficient and energy-saving. EcoSmart® - Energy Efficient: Energy-saving and environmentally friendly power supply through high efficiency across the entire load range and intelligent power management systems.

All these functions are automated. In addition, the operator has the option of checking and controlling all operating states or switching processes via specific software solutions.

All modules are customizable and, through specific bus systems/communication protocols and modular design, allow variable integration with mechanical and electrical conditions in a variety of specific application systems. or switching operations on a software.

WHY MOBILE?

The S.USV mobile variants allow the systems to be launched purely via battery and operated permanently, without the need for a primary source of supply. The modules also work with intelligent power management systems, thus preventing data loss or operational failures of the used systems.

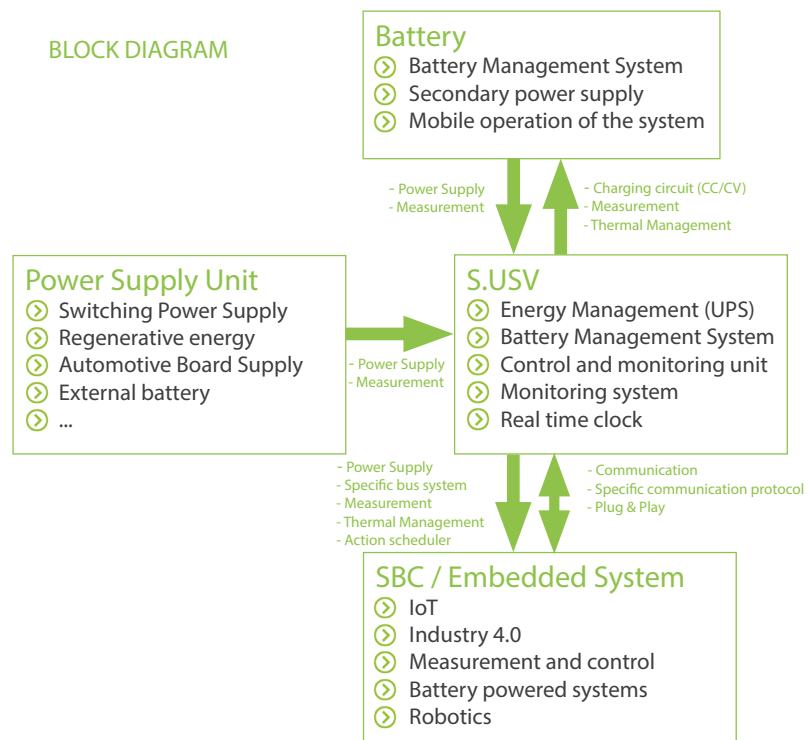
Thanks to the integrated real-time clock, as well as the function of the Timed Action Scheduler, the systems can be supplied energy-saving and thus drastically increasing the life time of the batteries.

Not all applications require that the single board computers and embedded systems are permanently in operational condition and therefore benefit from modern low-power strategies – so that the systems can be switched to sleep and low-power mode in order to save energy and only be started and operated when needed or at tightly configured operating times.

FUNCTION OVERVIEW

- ⌚ HAT compliant energy management modules
- ⌚ Integration capability in all SBCs and embedded systems
- ⌚ customized adjustments
- ⌚ custom communication protocols
- ⌚ Plug & Play
- ⌚ specific software solutions
- ⌚ uninterruptible power supply
- ⌚ Power input with extended voltage range (+ 7-24V)
- ⌚ Monitoring system (Performance / Power monitoring)
- ⌚ integrated LiPo battery with configurable charging control (300mA / 500mA / 1000mA)
- ⌚ Battery Management Controller
- ⌚ Battery Management System
- ⌚ Integrated Real Time Clock
- ⌚ time-controlled and event-based switching on and off the systems - Action scheduler
- ⌚ Supply Switch (On/Off Button / File Safe Shutdown)
- ⌚ LED status display
- ⌚ Bootloader for live firmware updates
- ⌚ Battery-Hot-Swap

BLOCK DIAGRAM

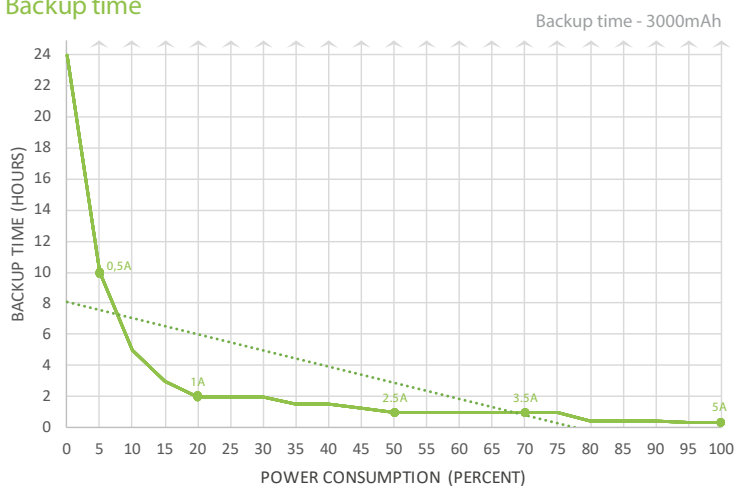


TECHNICAL SPECIFICATION

Input voltage - Primary	+7-24V			
Performance specifications		primary	secondary (battery operation)	charging circuit
	Max. Input current	3.5A	-	-
	Max. Output current	3.5A	3.5A	1A
	Max. Output voltage	+5V	+5V	+4.2V
Power consumption	average <4W / max. 25W			
Efficiency	up to 91%			
Ripple	<50 mVss			
Backup time	3000mAh = 0.5A ~ 10h / 2.5A ~ 1h / 5A ~ 0.25h (see Backup time)			
Protection Circuit	SCP, OLP, OCP, OVP, UVP, OTP, ODP, RCP			
Safety/EMC	EMC Directive 2014/30/EU, IEC 62368-1:2014, IEC 61140:2016			
Temperature range	-20°C to +60°C			
Dimensions	65x56,5x9,0mm (WxDxH)			
Battery data		300mAh - LiPo battery	3000mAh - LiPo battery	
	Nominal voltage	3.7V	3.7V	
	Operating voltage	3.0- 4.2V	3.0 - 4.2V	
	Capacity	300mAh	3000mAh	
	Internal impedance	≤60mΩ	≤30mΩ	
	Constant charge/ discharge current	2C/15C	1C/2C	
	Working temperature	-20-60°C	-20-60°C	
	Connection cable	UL1571#28	UL1571#28	
	Connector	Würth 620 002 113 322	Würth 620 002 113 322	
	Dimension	30.0 x 20.0 x 6.7 mm	60.0 x 50.0 x 9.0 mm	

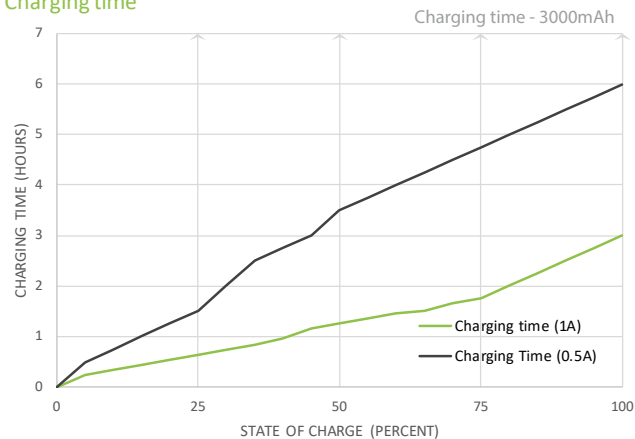
larger capacities on request

Backup time



(The measured backup time may vary depending on electrical conditions)

Charging time



S.USV - MODEL OVERVIEW / COMPARISON CHART

ALREADY AVAILABLE MODULES

	<i>S.USV pi basic mobile</i>	<i>S.USV pi advanced S.USV tinker S.USV UPs</i>	<i>S.USV pi advanced mobile S.USV tinker mobile S.USV UPs mobile</i>	<i>S.USV pi industrial S.USV tinker industrial S.USV UPs industrial</i>
Plug & Play	√	√	√	√
Starting process via battery (mobile)	√	x	√	√
Primary power supply/Output power	5 Volt/3500 mA	7-24 Volt/3500 mA	7-24 Volt/3500 mA	7-48 Volt/5000 mA
Backup Line (Backup input for secured supply)	x	x	x	7-48 Volt/5000 mA
Secondary power supply/ Output power (battery operation)	5 Volt/3500 mA	5 Volt/3500 mA	5 Volt/3500 mA	5 Volt/5000 mA
Interfaces	I ² C, GPIO	I ² C, GPIO	I ² C, GPIO	I ² C, GPIO
ID EEPROM	√	√	√	√
Monitoring - System	√	√	√	√
LiPo - Battery (300 mAh)	√	√	√	x
LiFePO4 - Battery (3400 mAh)	x	x	x	√
Battery Management	√	√	√	√
Battery Monitoring	√	√	√	√
Real Time Clock	√	√	√	√
Supply Switch	√	√	√	√
Customizable	√	√	√	√
Extern-Voltage-Monitoring	x	x	x	√
Dynamic-Power-Tracking	x	x	x	√
Thermal Management	x	x	x	√
Additional +5V/5A Power Output	x	x	x	√
Extended Protection Circuit	x	x	x	√
Watchdog	x	x	x	√
Power Cycle/Heartbeat	x	x	x	√
ESD protected 2-channel 10-Bit A/D converter	x	x	x	√
Automatic fan switching (optional)	x	x	x	√
Compatibility	All Raspberry Pi models	All Raspberry Pi models All Asus tinker models All UP Boards	All Raspberry Pi models All Asus tinker models All UP Boards	All Raspberry Pi models All Asus tinker models All UP Boards
Dimension	65x56,5x9,0mm (WxDxH)	65x56,5x9,0mm (WxDxH)	65x56,5x9,0mm (WxDxH)	65x56,5x9,0mm (WxDxH)

Mouser Electronics

Authorized Distributor

Click to View Pricing, Inventory, Delivery & Lifecycle Information:

Olmatic:

[PRFE21000030](#) [PRFE21000031](#) [PRFE21000032](#)