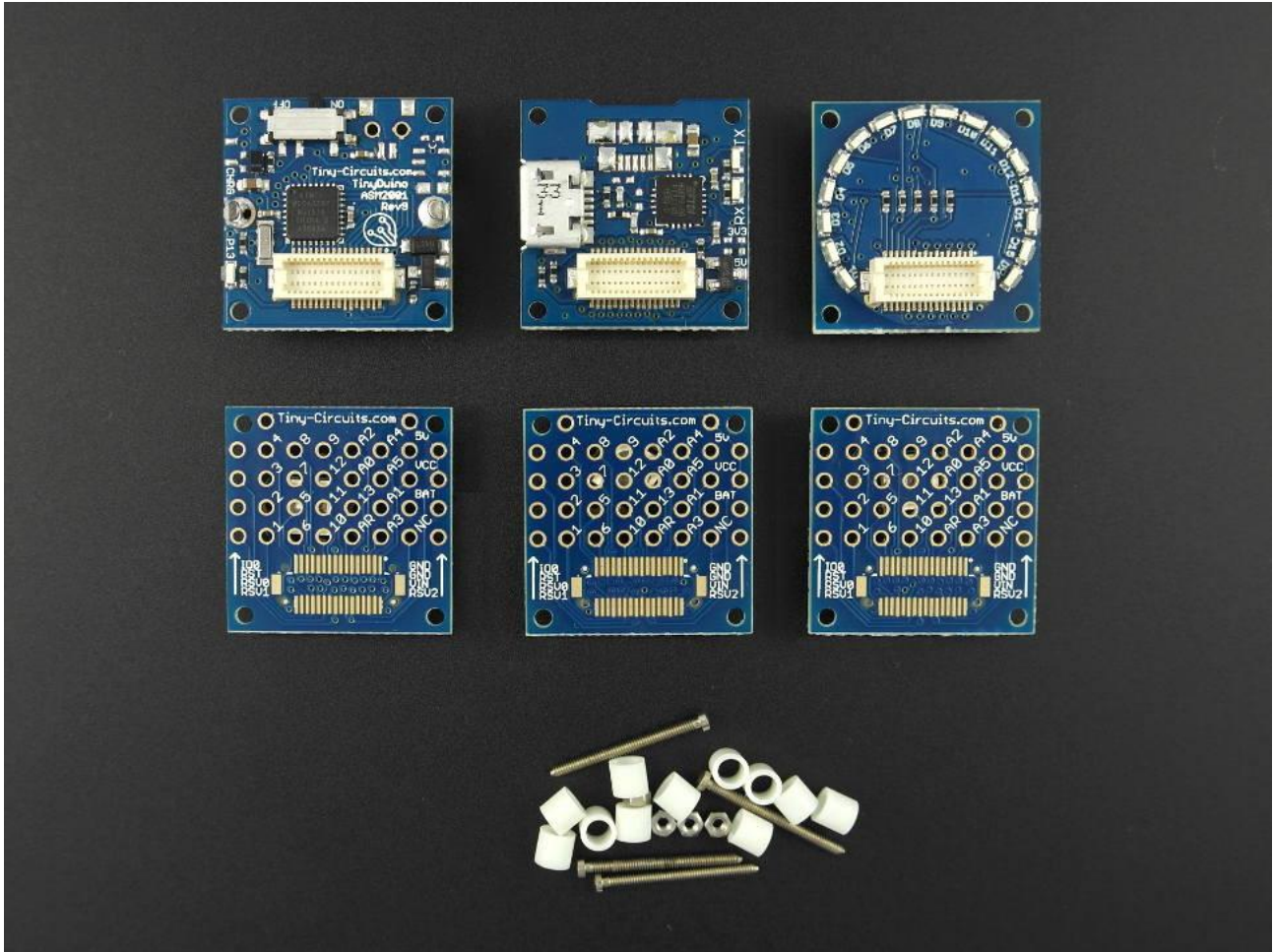


TinyDuino Starter Kit - Coin Cell - ASK1002-R-LG-B

 tinycircuits.com/products/tinyduino-starter-kit



DESCRIPTION

This **TinyDuino Starter Kit** is a great way to start with your TinyDuino and begin creating some cool projects! This kit comes with a TinyDuino processor with the **coin cell battery holder** (coin cell battery not included), so you can run your low power projects with a coin cell battery. You can also power your TinyDuino with a USB cable plugged in.

Note: For higher power projects you may want to check out the **TinyDuino Starter Kit - Lithium Battery Version**, which includes a rechargeable Lithium Polymer Battery pack.

This kit includes the following items:

This kit also includes basic instructions to get your first program running.

Notes

- The TinyDuino processor board included has the coin cell option. The coin cell (a CR1632) is not included in the kit.
- The coin cell battery can only be used for low power applications and cannot be used to power every TinyShield (such as the TinyScreen or the WiFi TinyShield). In these cases, plan on using the Lithium battery version of the TinyDuino Processor.
- A micro USB cable is not included in the kit.

Mouser Electronics

Authorized Distributor

Click to View Pricing, Inventory, Delivery & Lifecycle Information:

[TinyCircuits:](#)

[ASK1002-R-LG-B](#)