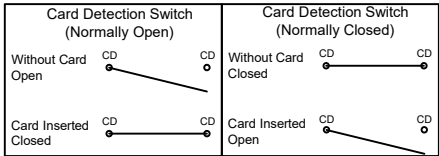
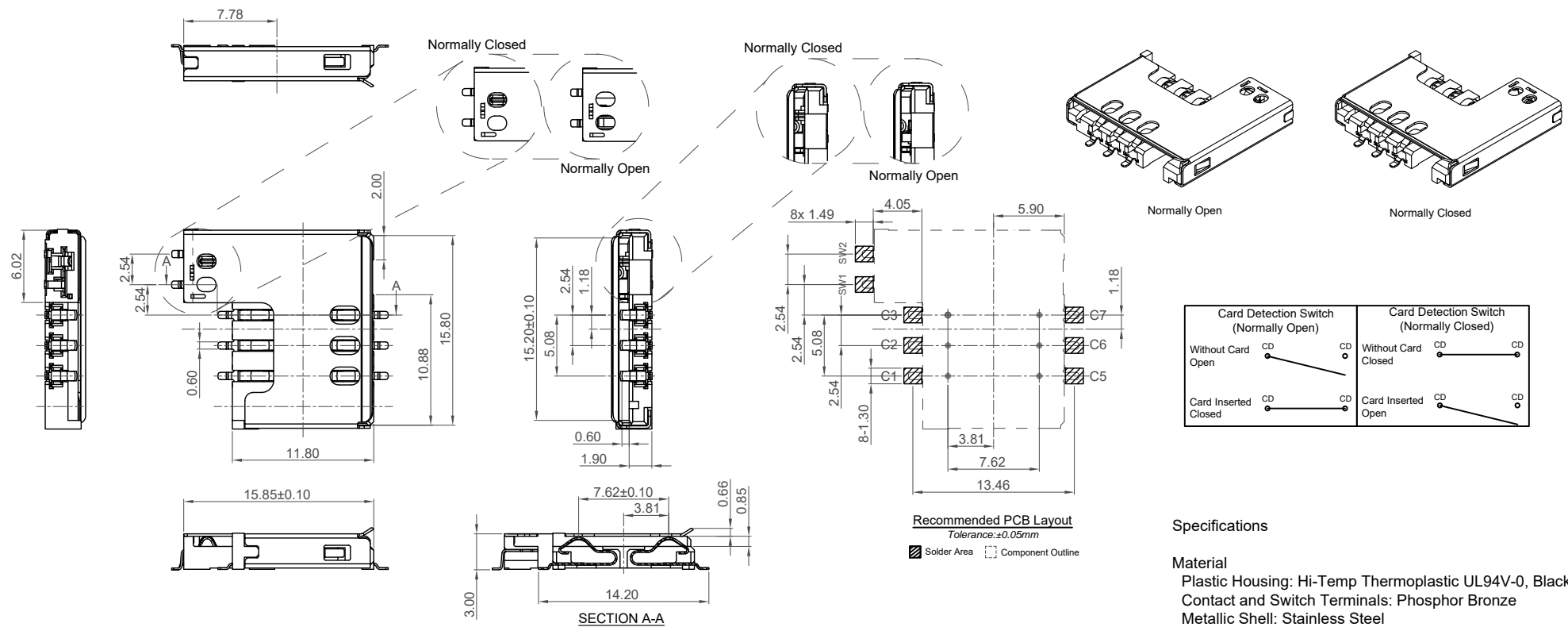


H
G
F
E
D
C
B
A



Specifications

Material
Plastic Housing: Hi-Temp Thermoplastic UL94V-0, Black
Contact and Switch Terminals: Phosphor Bronze
Metallic Shell: Stainless Steel

Plating
Under-Plating: 50µ" Nickel
Contact Area: 5µ" Gold
Soldering Area: Tin

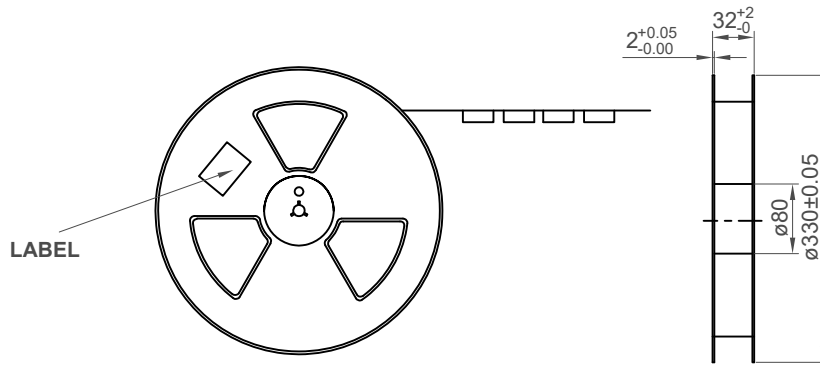
Electrical
Voltage Rating: 50V max.
Current Rating: 1A max. 10µ A min.
Operating Temperature: -40°C to +85°C
Contact Resistance: 50mΩ max.
Insulating Resistance: >1000MΩ/500VDC
Dielectric Withstanding Voltage: 500 VAC for 1 min

Mechanical & Environmental
Durability: 5,000 cycles

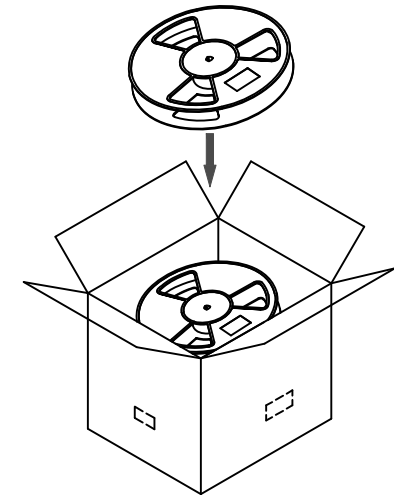
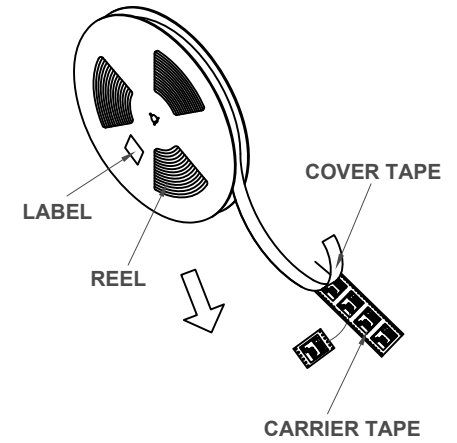
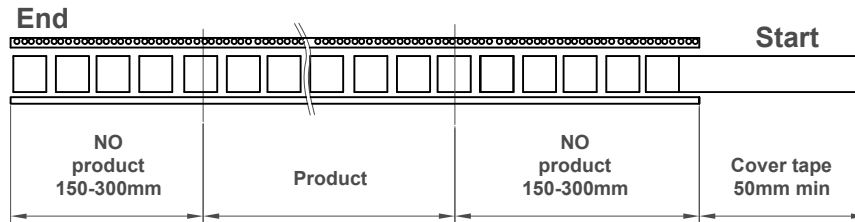
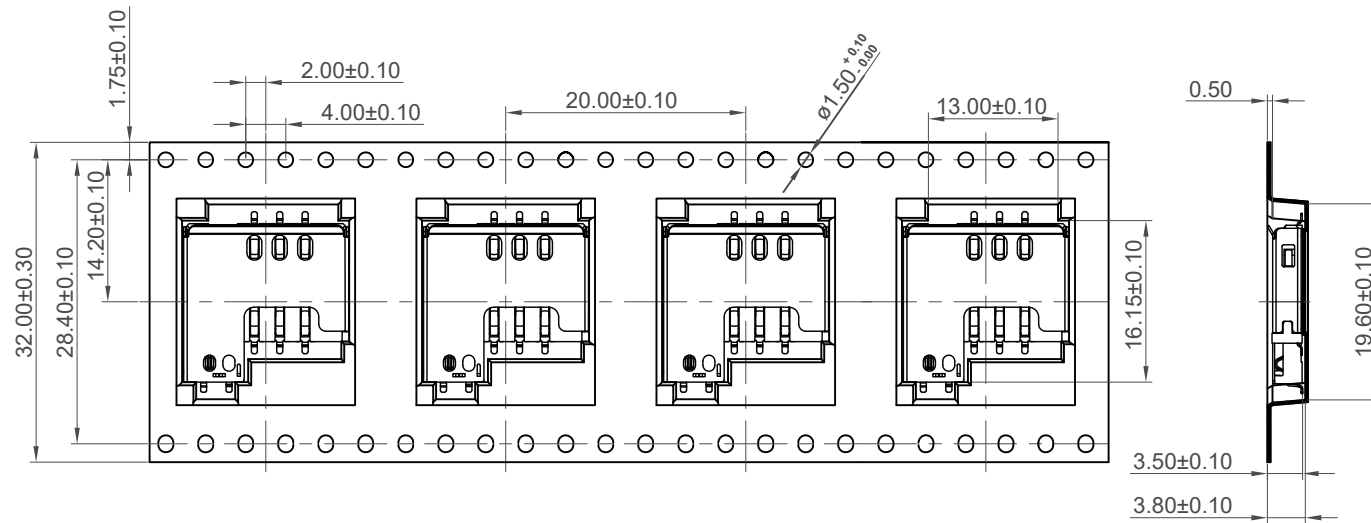
Ordering Grid

SIM2070	-	6	-	X	-	30	-	00	-	A	
No. of Contacts				Switch				Packing Options		Request Samples and Quotation	
6				1 = With - Normally Open (Standard) 0 = With - Normally Closed				A = Tape & Reel (700 Pcs per Reel)			
								Locating Post			
								00 = Without			




Part Number		Product Description			
SIM2070		SIM Card Connector - 3.44mm Profile			
Drawing Date		Receiver type 6 Pin, SMT, with Card Detect			
5th Dec 2011					
By	CC	Tolerances (Except as Noted)		Units:	Metric (mm)
Detail	SIM2070 D PCN	Length	Angle		
Revision	D3	X.X ± 0.25	X.° ± 1°		3rd Angle Projection
Date	01/07/22	X.XX ± 0.15	X.X° ± 0.5°		
		X.XXX ± 0.050	X.XX° ± 0.25°		
				RoHS COMPLIANT 2011/65/EU Deca-SIDE	
				This drawing is confidential and copyright of Global Connector Technology, Ltd (GCT). This drawing must not be copied or disclosed without written consent. E & OE	
				GCT www.gct.co	
				Not to Scale	Sheet No. 1/2



Gross Weight: 1.00KGS
Q'ty: 700 Pcs per Reel



Gross Weight: 8.00KGS
Quantity: 5600 Pcs per carton (8 Reels set in order)
Measure: 35.00L×35.00W×31.50H cm

Part Number		Product Description				
SIM2070		SIM Card Connector - 3.44mm Profile Receiver type 6 Pin, SMT, with Card Detect				
Drawing Date						
5th Dec 2011						
By	CC	Tolerances (Except as Noted)		Units: Metric (mm)		 This drawing is confidential and copyright of Global Connector Technology, Ltd (GCT). This drawing must not be copied or disclosed without written consent. E & OE
Detail	SIM2070 D PCN	Length Angle				
Revision	D3			 3rd Angle Projection		
Date	01/07/22					



This drawing is confidential and copyright of Global Connector Technology, Ltd (GCT). This drawing must not be copied or disclosed without written consent. E & OE

GCT
www.gct.co

Not to Scale	Drawn By CM	Sheet No. 2/2
--------------	----------------	------------------

Mouser Electronics

Authorized Distributor

Click to View Pricing, Inventory, Delivery & Lifecycle Information:

[GCT:](#)

[SIM2070-6-0-30-00-A](#)