

RFPC-SMA29-F : RP SMA Vertical Jack, PCB Connector, 6GHz

Material and Plating:

Insulator: PTFE, WHITE

Pin: Brass, Gold

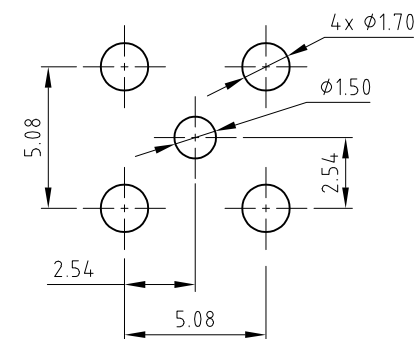
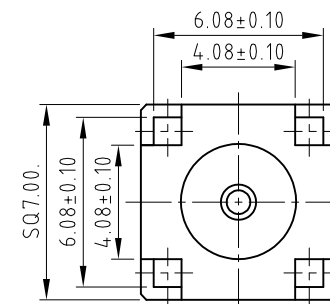
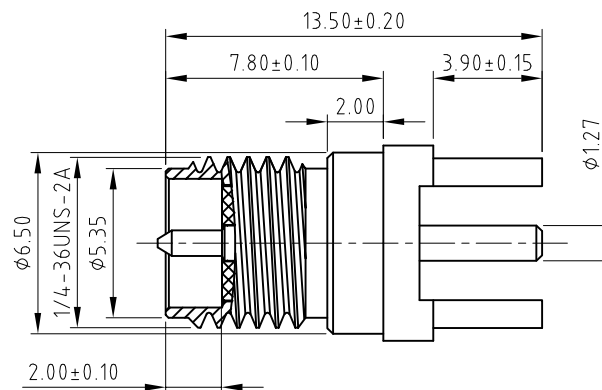
Body: Brass, Gold

Specification:

Operating Temperature: -55°C~+125°C

Working Frequency Range: DC~6GHz

Impedance: 50 Ohm.



Recommended PCB Layout
Tolerance: ±0.05

REV. DATE & DOW
1.0 2/7/23 - CC RELEASE
1.1 2/13/24 - CC RELEASE
Update product description
1.2 12/15/25 - NYM
Add GCT logo.

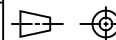
Scale: NTS

Drawn: CC

App'd: XXX

Date: 12 MAY '25

THIRD ANGLE



Unstated
.X
.XX
.XXX
ANGLES

Tolerances:
±0.2
±0.1
±0.05
±3°

Title RP SMA PCB Connector

Revision: 1.2

Material
SEE NOTE

NOT TO SCALE

Unit: mm

GCT **GRADCONN**
www.gct.co www.gradconn.com

THIS DRAWING IS CONFIDENTIAL AND MUST NOT BE
COPIED OR DISCLOSED WITHOUT WRITTEN CONSENT

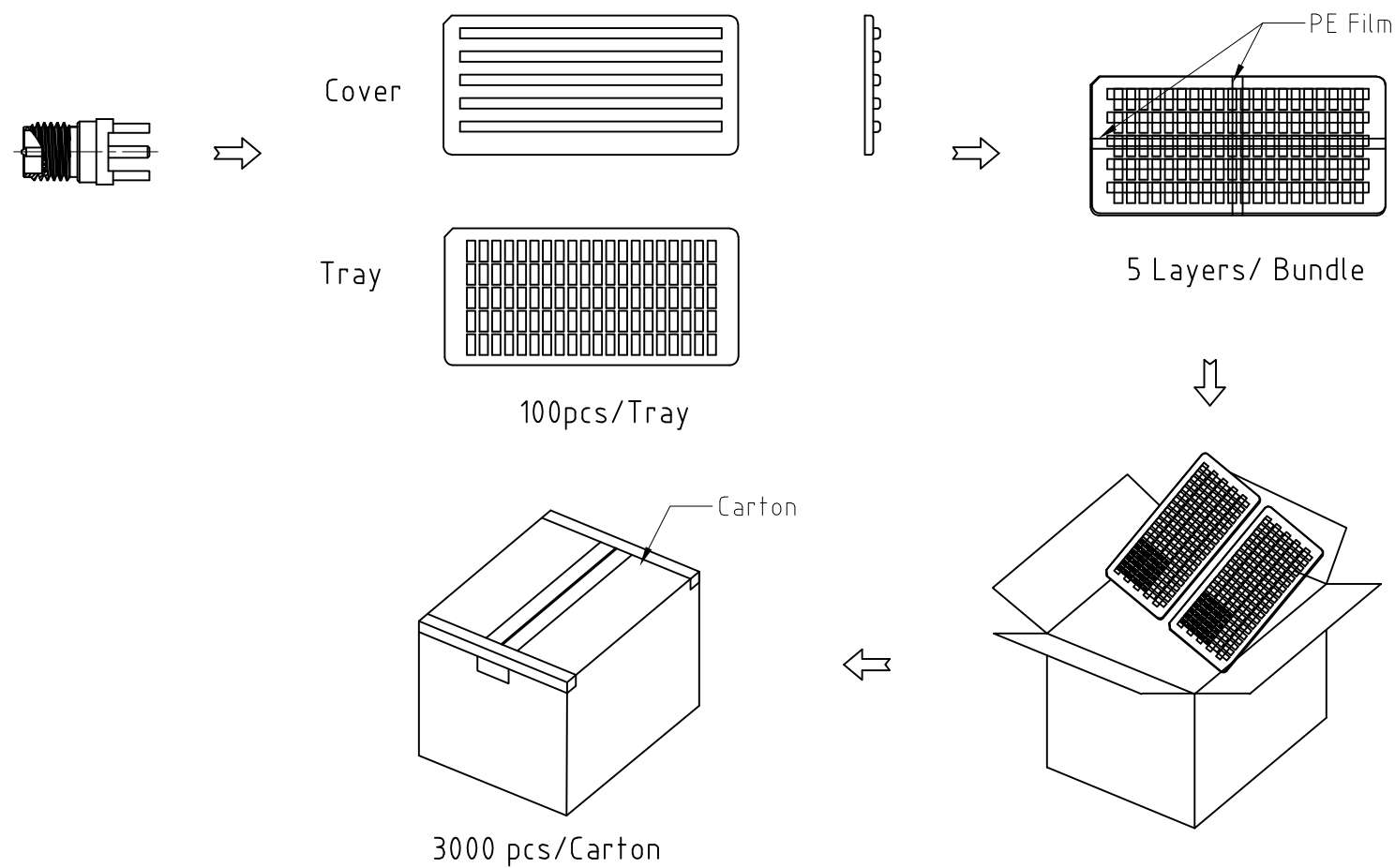
Type: RFPC-SMA29-F

RFPC-SMA29-F

Drawing Number:

Sheet 1 of 2

Drawing © E and O E



pcs / Tray	Trays / Carton	pcs/Carton
100	30	3000

Mouser Electronics

Authorized Distributor

Click to View Pricing, Inventory, Delivery & Lifecycle Information:

[GCT:](#)

[RFPC-SMA29-F](#)