

## RFPC-MMCX04-F : MMCX Straight Jack, Surface Mount Type

## Material and Plating:

Insulator: PTFE

Pin: Be Cu, Gold

Body: Brass, Gold

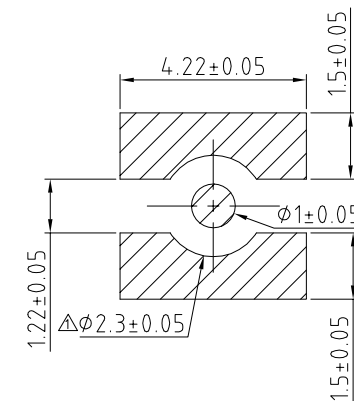
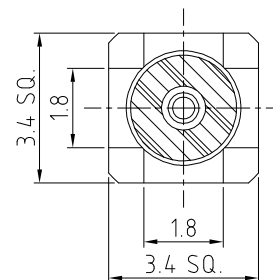
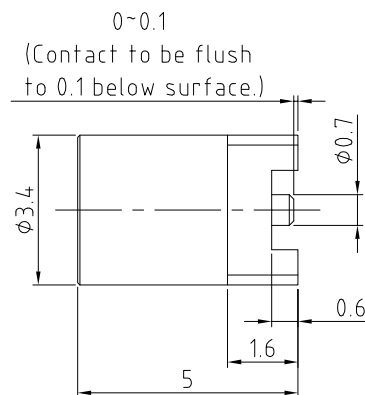
## Specification:

Durability: 500 Mating Cycles Min.

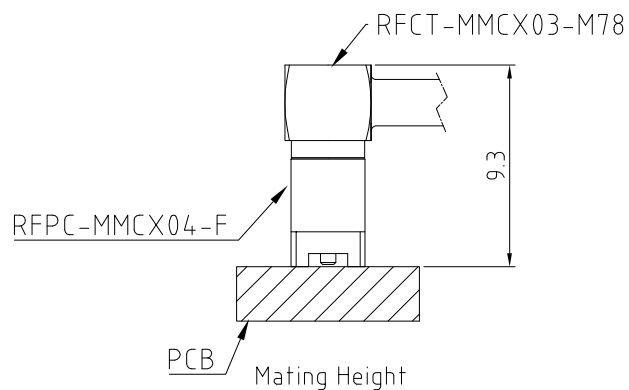
Operating Temperature: -40°C~+125°C

Working Frequency Range: DC~6GHz

Impedance: 50 Ohm.



Recommended PCB SMT Layout

HOW TO ORDER  
R F P C - M M C X 0 4 - F - X

PACKAGING OPTIONS:

T = TRAY

R = TAPE &amp; REEL + CAP (1,500PCS/REEL)

REV. DATE & DRN
10 20/05/19 - NYW RELEASE
11 24/02/20 - NYW ADD MATING HEIGHT DIAGRAM
12 27/07/20 - NYW AMEND OPERATING TEMP.
13 24/12/21 - NYW ΔAMEND DIMENSION
14 14/02/23 - NYW ADD IMPEDANCE

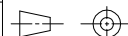
Scale: NTS

Drawn: NYW

App'd: XXX

Date: 14 FEB. '23

THIRD ANGLE



Title JACK

Revision: 1.4

Unstated  
.XX  
.XXX  
ANGLESTolerances:  
±0.2  
±0.2  
±0.2  
±5Material  
SEE NOTE

NOT TO SCALE

Unit: mm



www.gradconn.com

© THIS DRAWING IS CONFIDENTIAL AND MUST NOT BE  
COPIED OR DISCLOSED WITHOUT WRITTEN CONSENT

Type: RFPC-MMCX04-F

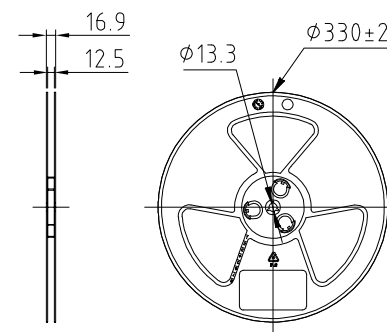
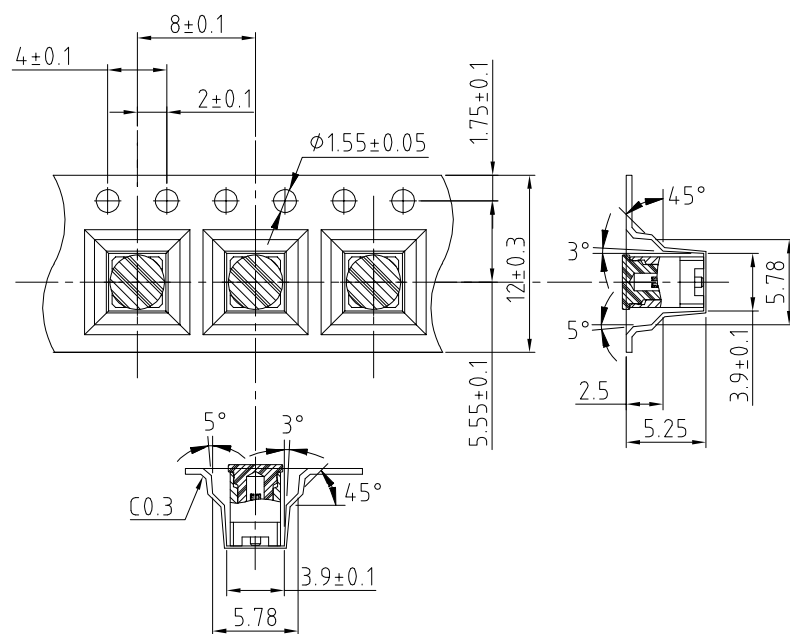
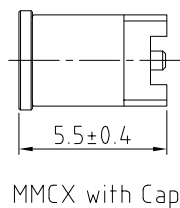
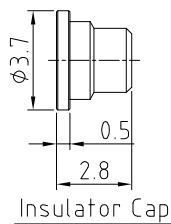
RFPC-MMCX04-F

Drawing Number:

Sheet 1 of 2

Drawing © E and O E

## RFPC-MMCX04-F : TAPE AND REEL PACKAGING DRAWING



## Notes:

1. Reel Diameter: 33cm
2. Unit Per Reel: 1,500pcs.
3. Insulator Cap Material: Polyamide Resin.

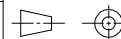
Scale: NTS

Drawn: NYW

App'd: XXX

Date: 20 MAY '19

THIRD ANGLE



Title JACK

Revision: 1.0

Unstated Tolerances:  
.X ±0.2  
.XX ±0.2  
.XXX ±0.2  
ANGLES ±5

Material  
SEE NOTE

NOT TO SCALE

Unit: mm



www.gradconn.com

THIS DRAWING IS CONFIDENTIAL AND MUST NOT BE  
COPIED OR DISCLOSED WITHOUT WRITTEN CONSENT

Type: RFPC-MMCX04-F

RFPC-MMCX04-F

Drawing Number:

Sheet 2 of 2

Drawing © E and O E

# Mouser Electronics

Authorized Distributor

Click to View Pricing, Inventory, Delivery & Lifecycle Information:

[GCT:](#)

[RFPC-MMCX04-F-R](#)