

## RFPC-MMCX03-F : MMCX Straight Jack, PCB Mount Type

## Material and Plating:

Insulator: PTFE

Pin: Be Cu, Gold

Body: Brass, Gold

## Specification:

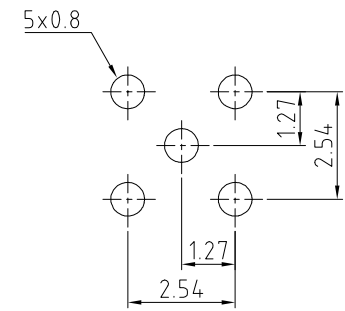
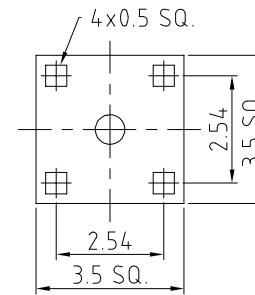
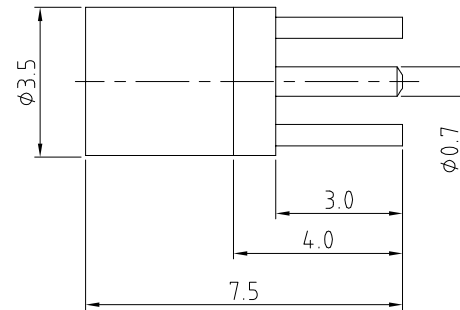
Durability: 500 Mating Cycles Min.

Operating Temperature: -40°C~+125°C

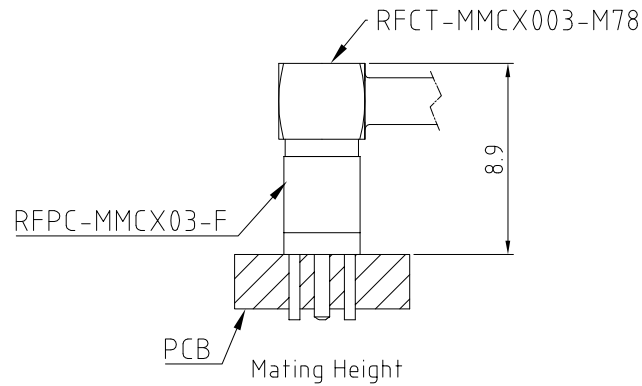
Working Frequency Range: DC~6GHz

Impedance: 50 Ohm.

Packaging: Bulk in Tray



Recommended PCB Layout



REV. DATE & DRN
10 20/05/19 - NYW RELEASE
11 24/02/20 - NYW ADD MATING HEIGHT DIAGRAM
12 27/07/20 - NYW AMEND OPERATING TEMP.
13 14/02/23 - NYW ADD IMPEDANCE

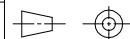
Scale: NTS

Drawn: NYW

App'd: XXX

Date: 14 FEB. '23

THIRD ANGLE



Title JACK

Revision: 13

Unstated  
X  
.XX  
.XXX  
ANGLESTolerances:  
±0.2  
±0.2  
±0.2  
±5Material  
SEE NOTE

NOT TO SCALE

Unit: mm

© THIS DRAWING IS CONFIDENTIAL AND MUST NOT BE  
COPIED OR DISCLOSED WITHOUT WRITTEN CONSENT

Type: RFPC-MMCX03-F

RFPC-MMCX03-F

Drawing Number:

Sheet 1 of 1

Drawing © E and O E

# Mouser Electronics

Authorized Distributor

Click to View Pricing, Inventory, Delivery & Lifecycle Information:

[GCT:](#)

[RFPC-MMCX03-F](#)