

Specifications

Material

Insulator: PA9T, UL 94V-0, Black
Contact: Copper Alloy
Mid Plate: Stainless Steel
EMI Plate: Stainless Steel
Shell: Stainless Steel

Plating

Contact
Contact Area: 3u" Au over 50µ" min. Nickel
Solder Tails: Gold Flash over 50µ" min. Nickel
Shell: 30µ" min. Nickel
Mid Plate: Clear
EMI Plate: Clear

Electrical

Current Rating: 5.00A collectively for Vbus pins
6.25A collectively for GND pins
1.25A for A5/B5 pin
0.25A per pin for all other pins

Voltage Rating: 48V DC

Power Rating: 240W

Contact Resistance: 40mΩ max initial.

50mΩ max after test

Dielectric Withstanding Voltage: 100V AC

Insulation Resistance 100MΩ min

Mechanical & Environmental

Operating Temperature: -25°C to +85°C

Mating Force: 5 to 20 N.

Unmated Force: 6 to 20 N after test

Durability: 20K cycles

Ordering Grid

USB4145 - 03 - XXXX - C [Request Samples and Quotation](#)

Contact Plating
03 = 3u" Gold

Packing Options

C = Tape & Reel with Cap

Shell Stake Length "S"

0070 = 0.70mm

0170 = 1.70mm

0230 = 2.30mm

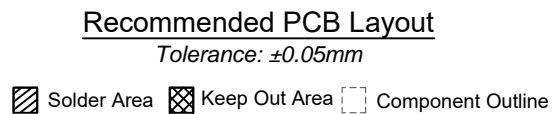
| Part Number | | Product Description | |
|--------------|-----------------|---|-------------|
| USB4145 | | USB2.0 Type C Receptacle, Vertical, SMT, H=7.46mm, 16 Pin | |
| Drawing Date | | 28th June 2022 | |
| By | CC | Tolerances (Except as Noted) | Units: |
| Detail | Drawing Release | Length | Metric (mm) |
| Revision | A2 | Angle | |
| Date | 31/01/23 | X.X ± 0.30 | |
| | | X.XX ± 0.20 | |
| | | X.XXX ± 0.10 | |




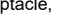


This drawing is confidential and copyright of Global Connector Technology, Ltd (GCT). This drawing must not be copied or disclosed without written consent. E & OE

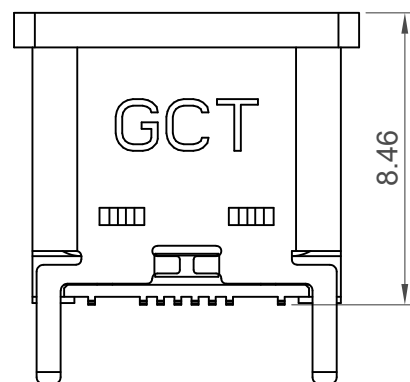
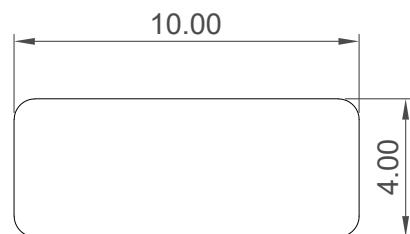
GCT
www.gct.co

Not to Scale
Drawn By
Scale
CC
Sheet No.
1/4

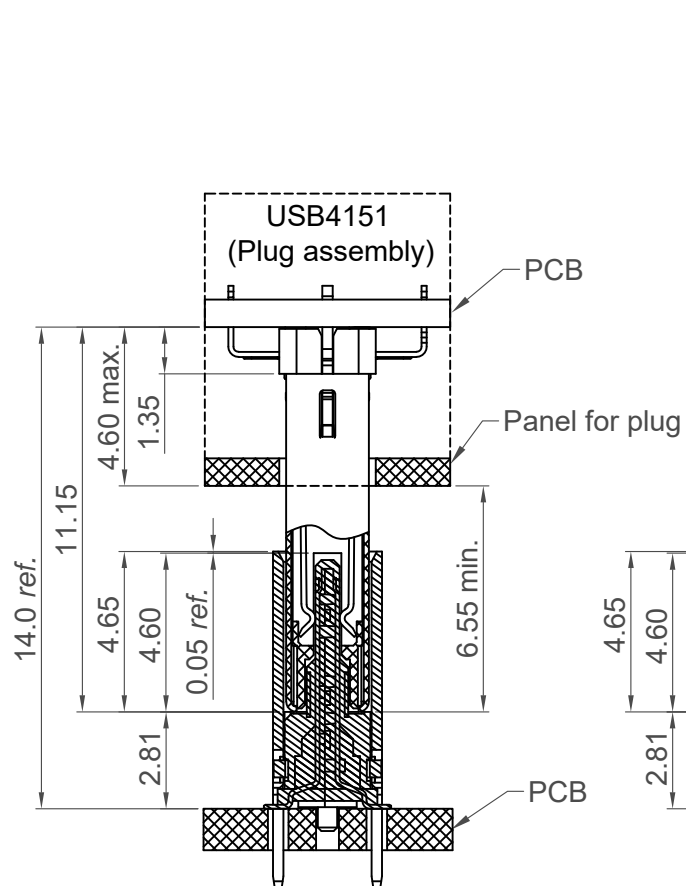


| Pin | Signal | Mating Sequence | Pin | Signal | Mating Sequence |
|-------|------------------|-----------------|-------|------------------|-----------------|
| A1 | GND | First | B12 | GND | First |
| A4 | V _{BUS} | First | B9 | V _{BUS} | First |
| A5 | CC1 | Second | B8 | SBU2 | Second |
| A6 | Dp1 | Second | B7 | Dn2 | Second |
| A7 | Dn1 | Second | B6 | Dp2 | Second |
| A8 | SBU1 | Second | B5 | CC2 | Second |
| A9 | V _{BUS} | First | B4 | V _{BUS} | First |
| A12 | GND | First | B1 | GND | First |
| SHELL | | GND | SHELL | | GND |

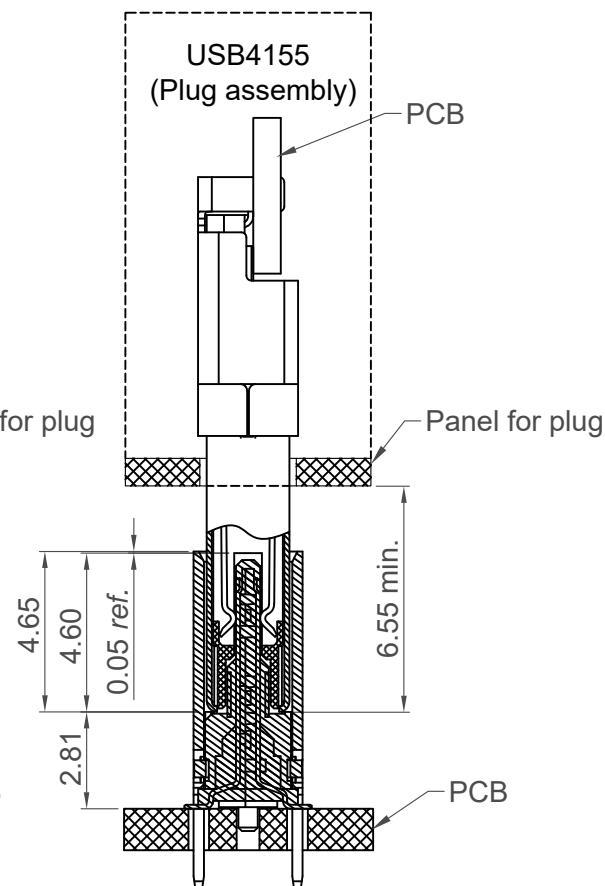
| | | | | | | |
|----------------|-----------------|--|-------|---|---|---|
| Part Number | | Product Description | | | |  www.gct.co |
| USB4145 | | USB2.0 Type C Receptacle, Vertical, SMT, H=7.46mm, 16 Pin | | | | |
| Drawing Date | | | | | | |
| 28th June 2022 | | | | | | |
| By | CC | Tolerances (Except as Noted) | | Units: |   This drawing is confidential and copyright of Global Connector Technology, Ltd (GCT). This drawing must not be copied or disclosed without written consent. E & OE | |
| Detail | Drawing Release | Length | Angle | Metric (mm) | | |
| Revision | A2 | X.X ± 0.30 | - |  3rd Angle Projection | | |
| Date | 31/01/23 | X.XXX ± 0.10 | | | | |
| | | | | | | Not to Scale |
| | | | | | | Drawn By CC |
| | | | | | | Sheet No. 2/4 |



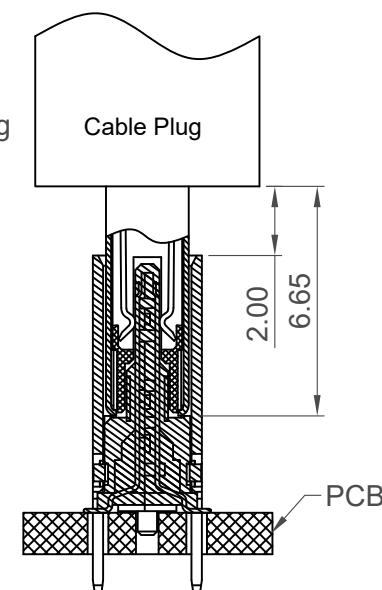
Cap Information



USB4145
(Receptacle assembly)


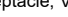




USB4145
(Receptacle assembly)

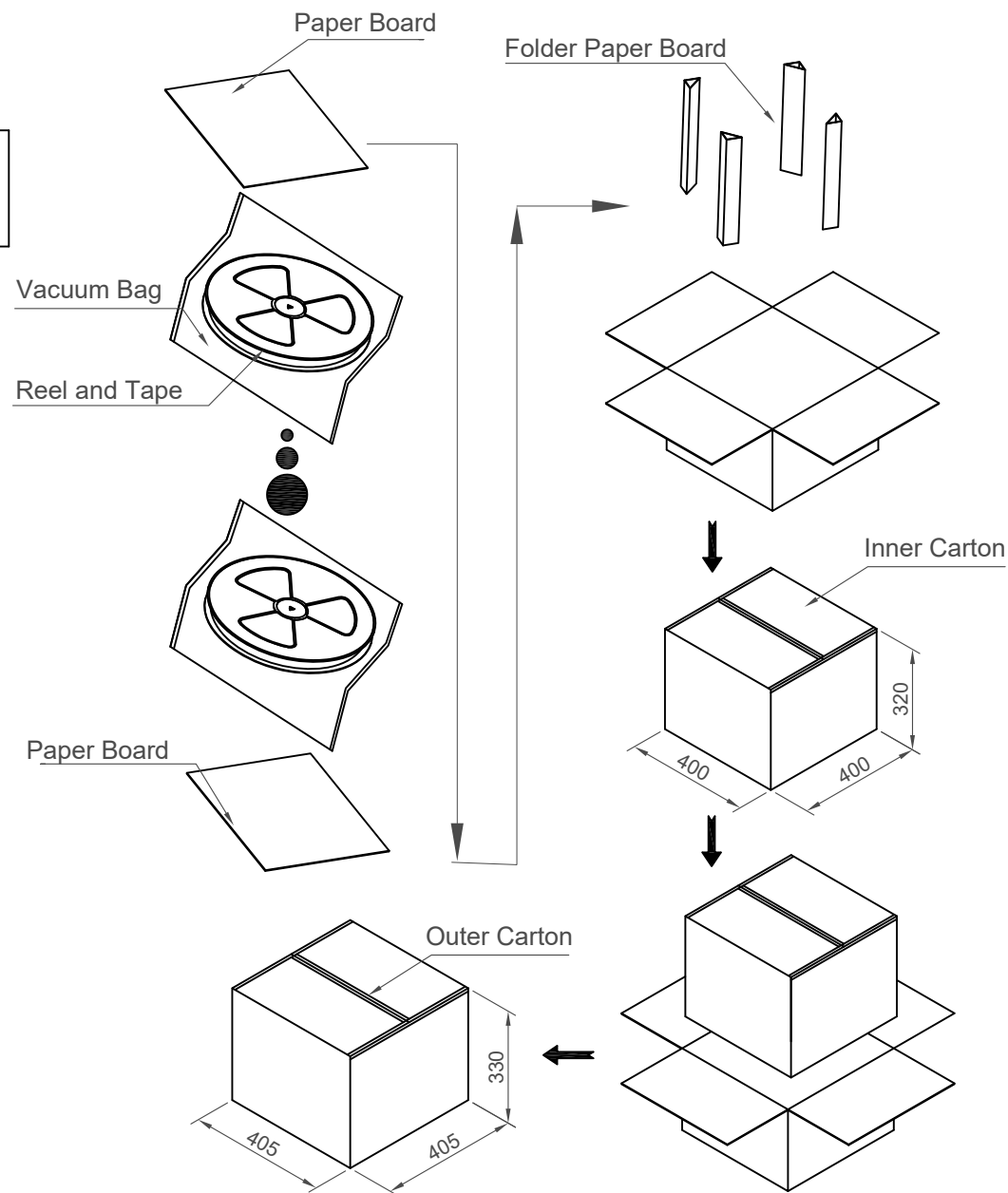
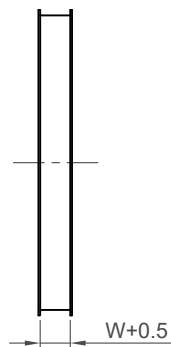
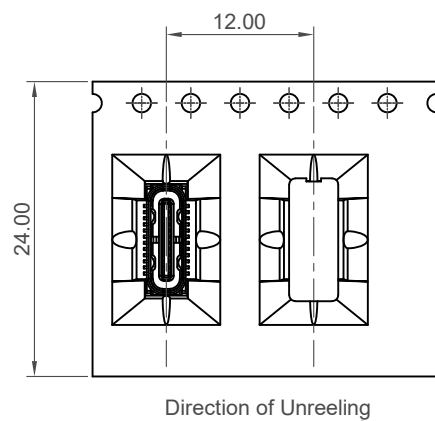
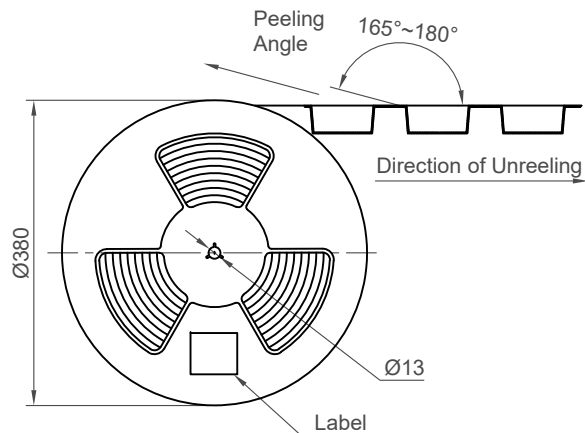
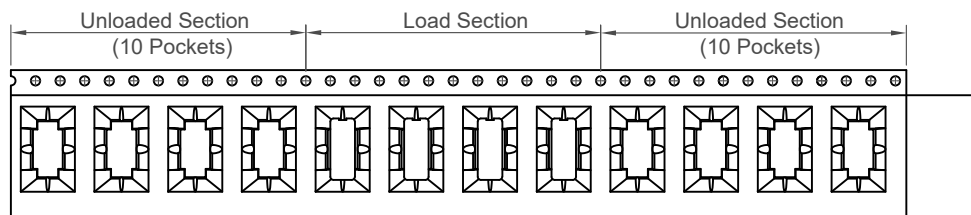


USB4145
(Receptacle assembly)

Plug and Receptacle Mating View

| | | | | | |
|----------------|-----------------|---|-------------|---|---|
| Part Number | | Product Description | | <div> www.gct.co</div> | |
| USB4145 | | USB2.0 Type C Receptacle, Vertical, SMT, H=7.46mm, 16 Pin | | | |
| Drawing Date | | | | | |
| 28th June 2022 | | | | | |
| By | CC | Tolerances (Except as Noted) | Units: | <div> RoHS COMPLIANT 2011/65/EU Deca-BDE</div> <div> 3rd Angle Projection</div> <div> This drawing is confidential and copyright of Global Connector Technology, Ltd (GCT). This drawing must not be copied or disclosed without written consent. E & OE</div> | <div>Not to Scale</div> <div>Drawn By CC</div> <div>Sheet No. 3/4</div> |
| Detail | Drawing Release | Length | Metric (mm) | | |
| Revision | A2 | X.X ± 0.30 | | | |
| Date | 31/01/23 | X.XX ± 0.20 | | | |
| | | X.XXX ± 0.10 | | | |

H
G
F
E
D
C
B
A



| Part Number | Pcs / Reel | Reels / Carton | Total Quantity |
|-------------------|------------|----------------|----------------|
| USB4145-03-0070-C | 700 | 10 | 7,000 pcs |
| USB4145-03-0170-C | 600 | 10 | 6,000 pcs |
| USB4145-03-0230-C | 600 | 10 | 6,000 pcs |

| | | | |
|--------------|-----------------|---|-------------|
| Part Number | | Product Description | |
| USB4145 | | USB2.0 Type C Receptacle, Vertical, SMT, H=7.46mm, 16 Pin | |
| Drawing Date | | 28th June 2022 | |
| By | CC | Tolerances (Except as Noted) | Units: |
| Detail | Drawing Release | Length | Metric (mm) |
| Revision | A2 | Angle | |
| Date | 31/01/23 | X.X ± 0.30 | |
| | | X.XX ± 0.20 | |
| | | X.XXX ± 0.10 | |



This drawing is confidential and copyright of Global Connector Technology, Ltd (GCT). This drawing must not be copied or disclosed without written consent. E & OE



| | | |
|--------------|-------------|---------------|
| Not to Scale | Drawn By CC | Sheet No. 4/4 |
|--------------|-------------|---------------|

Mouser Electronics

Authorized Distributor

Click to View Pricing, Inventory, Delivery & Lifecycle Information:

[GCT:](#)

[USB4145-03-0070-C](#) [USB4145-03-0170-C](#) [USB4145-03-0230-C](#)