

CABLE 252 RF: SMA R/A PLUG + RP SMA STRAIGHT BULKHEAD JACK W/O-RING RATED TO IP67/68 + RG178 CABLE

SPECIFICATIONS :

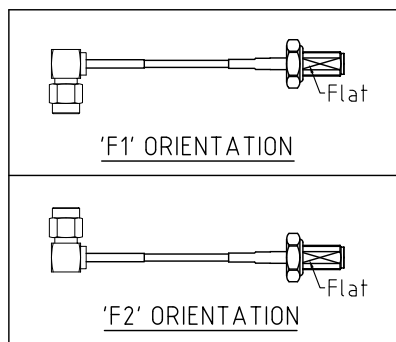
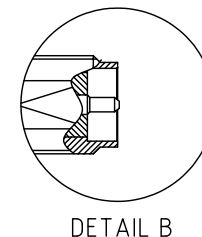
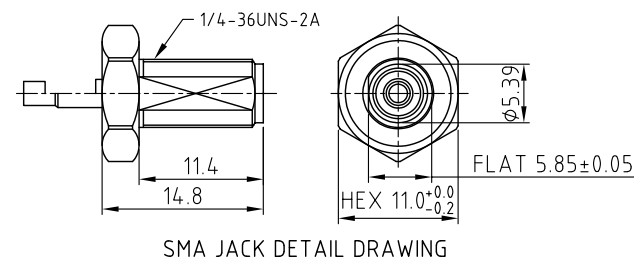
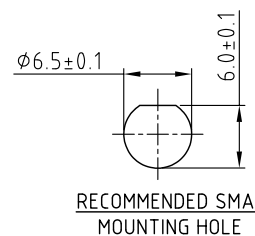
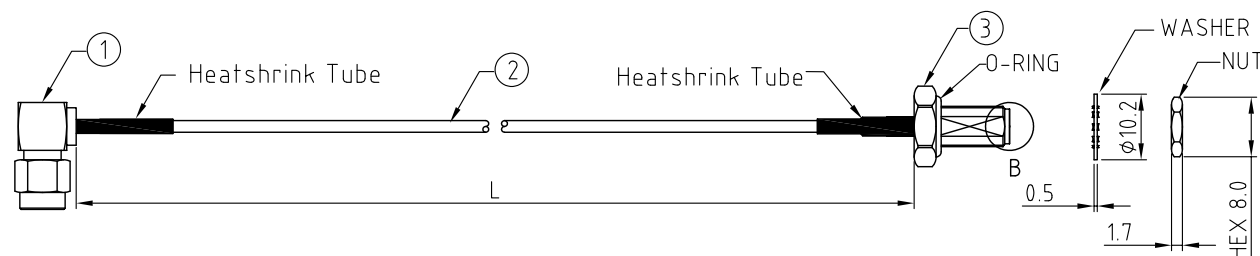
1. SMA RIGHT ANGLE PLUG, P/N: RFCT-SMA025-M78.
2. COAXIAL CABLE, SEE P/N OPTIONS FOR DETAIL.
3. RP SMA STRAIGHT BULKHEAD JACK W/O-RING RATED TO IP67/68, P/N: RFCT-SMA008-F78.

ENVIRONMENTAL:

- A. BULKHEAD MOUNTED CONNECTOR (RFCT-SMA008-F78) TESTED TO THE FOLLOWING SPECIFICATION:
- i. IP6X – DUST TIGHT – NO PARTICLE INGRESS.
  - ii. IPX7 WATERPROOF FOR 30 MINUTES UP TO 1 METER UNDERWATER.
  - iii. IPX8 WATERPROOF FOR 48 HOURS AT 1 METER UNDERWATER.
  - iv. IPX8 WATERPROOF FOR 12 HOURS AT 5 METERS UNDERWATER.
  - v. PRESSURE TEST – 1 BAR FOR 10 SECONDS.

NOTES:

1. THE ORIENTATION OF CONNECTORS ON DRAWING IS FOR REFERENCE ONLY, IF THE ORDER IS LEFT BLANK THE CONNECTOR WILL NOT HAVE FIXED ORIENTATION.
2. FIXED ORIENTATION IS SUGGESTED FOR CABLE LENGTH 25MM TO 100MM. PLEASE SPECIFY THE FIXED ORIENTATIONS FROM THE ORDER CODE (F1, F2, ETC)
3. CONTACT GCT IF THE ORIENTATION YOU REQUIRE IS NOT SHOWN.
4. WORKING FREQUENCY RANGE: DC-3GHz.
5. OPERATING TEMPERATURE: -40°C TO +125°C
6. IMPEDANCE: 50 OHM



## HOW TO ORDER

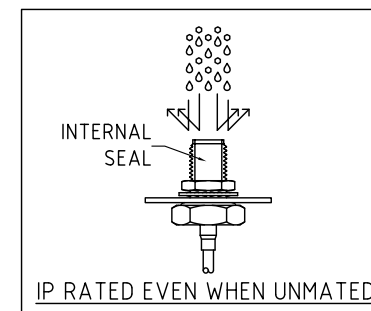
CABLE 252 RF - X X X X - X X - X - 1




"L" LENGTH IN MM:  
eg: 100MM = 0100  
(MIN. 0050-MAX.2000  
STANDARD = 0100, 0150, 0200)  
Tolerance: 50mm:  $\pm 2$ mm.  
51-200mm:  $\pm 5$ mm.  
201-500mm:  $\pm 7$ mm.  
>501mm:  $\pm 10$ mm.

CABLE SIZE:  
1 = RG178 CABLE. COLOR: BROWN.

WASHER AND NUT OPTIONS:  
 BLANK = SEPARATELY PACKED (STANDARD)  
 A = ALL ASSEMBLED WITH CONNECTOR

**ORIENTATION OPTIONS:**  
**BLANK = DOES NOT HAVE A FIXED ORIENTATION**  
**F1 = SMA PLUG CONNECTION DOWN (L=50-200MM)**  
**F2 = SMA PLUG CONNECTION UP (L=50-200MM)**  
**(SEE NOTES 1, 2, 3 AND DIAGRAMS FOR MORE INFORMATION)**



<div>REV. DATE &amp; DRN</div> <div>10 12/07/76 - 2-B RELEASE</div> <div>11 04/05/78 - NYM</div> <div>ADD ORIENTATION OPTIONS.</div> <div>12 22/05/78 - NYM</div> <div>ADD NOTES 5 &amp; 6.</div> <div>13 24/07/78 - NYM</div> <div>2-B RELEASE OPERATING TEMP.</div> <div>14 03/03/74 - CC</div> <div>ADD P RATING VIEW</div> <div>15 16/02/75 - KY</div> <div>Add GCT logo.</div>	Scale: NTS	THIRD ANGLE		Unstated .X .XX .XXX ANGLES	Tolerances: N/A N/A N/A N/A	<div>IP Rated RF Products</div>	<div></div> <div>www.gct.co</div> <div>www.gradconn.com</div>	Type: Cable 252 RF
	Drawn: KY							CABLE 252 RF
	App'd: XXX	Title CABLE ASSEMBLY						Drawing Number:
	Date: 16 FEB. '25	Revision: 1:5	Unit: mm		<div>www.gct.co</div> <div>www.gradconn.com</div>			
	© THIS DRAWING IS CONFIDENTIAL AND MUST NOT BE COPIED OR DISCLOSED WITHOUT WRITTEN CONSENT						Sheet 1 of 1	
							Drawing ©	E and O E

# Mouser Electronics

Authorized Distributor

Click to View Pricing, Inventory, Delivery & Lifecycle Information:

[GCT:](#)

[CABLE 252 RF-0300-A-1](#) [CABLE 252 RF-0200-A-1](#) [CABLE 252 RF-0100-A-1](#)