

CUSTOMER PRODUCT SPECIFICATION SHEET

CAB576RF: I-PEX MHF PLUG + RP S/S SMA FEMALE STRAIGHT BULKHEAD JACK W/O-RING TESTED TO IP68/69K + Ø1.13MM CABLE, 6GHZ

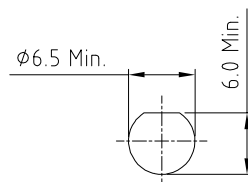
1. I-PEX MHF PLUG, GOLD PLATED, P/N: 20278-112R-13.
2. Ø1.13MM COAXIAL CABLE, COLOR: GRAY.
3. RP SMA STRAIGHT BULKHEAD JACK W/O-RING, W/SUS303 STAINLESS STEEL BODY, RATED TO IP68/69K, P/N: RFCT-SMA124-F13 (WITH SILICONE O-RING), RFCT-SMA124-F13-1 (WITH EPDM O-RING).
4. WASHER: SUS304.
5. NUT: SUS303, PASSIVATED.

A. BULKHEAD MOUNTED CONNECTOR (RFCT-SMA124-F13-1) TESTED TO THE FOLLOWING SPECIFICATION:

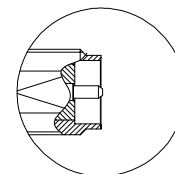
- i. IP6X - DUST TIGHT - NO PARTICLE INGRESS.
- ii. IPX8 WATERPROOF FOR 48 HOURS AT 1 METER UNDERWATER.
- iii. IPX9K WATER SPRAY, 14-16L PER MINUTE, AT 8,000-10,000 KPA, AT 100-150MM DISTANCE FOR 30 SECONDS.

1. THE ORIENTATION OF CONNECTORS ON DRAWING IS FOR REFERENCE ONLY, IF THE ORDER IS LEFT BLANK THE CONNECTOR WILL NOT HAVE FIXED ORIENTATION
2. FIXED ORIENTATION IS SUGGESTED FOR CABLE LENGTH 50MM TO 100MM. PLEASE SPECIFY THE FIXED ORIENTATIONS FROM THE ORDER CODE (F1, F2, ETC)
3. CONTACT GRADCONN IF THE ORIENTATION YOU REQUIRE IS NOT SHOWN.
4. WORKING FREQUENCY RANGE: DC-6GHz.
5. OPERATING TEMPERATURE: -40°C TO +85°C
6. IMPEDANCE: 50 OHM
7. IF THE CONNECTOR IS USED IN A CORROSIVE ENVIRONMENT, WE RECOMMEND THE CONNECTOR FACE IS PROTECTED WITH A STAINLESS STEEL DUST CAP.
8. PLEASE USE THE RECOMMENDED TORQUE FORCES FOR STAINLESS STEEL CONNECTORS. THIS IS PUBLISHED ON [GRADCONN.COM](https://www.gradconn.com/resources) RESOURCES PAGE.

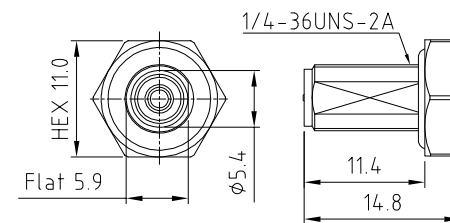
- (i) HANDLE WITH CARE.
- (ii) DO NOT TWIST; APPLY EXCESSIVE FORCES OR SHARP BENDS TO THE CABLE. DO NOT FORCEFULLY DEFORM WIRES.
- (iii) CONSULT CONNECTOR MANUFACTURER'S DATASHEETS FOR DETAILED NOTES ON HANDLING INSTRUCTIONS.



RECOMMENDED SMA
MOUNTING HOLE



DETAIL A



SMA JACK DETAIL DRAWING

CAB576RF - X X X X - X X - X - 1 - X

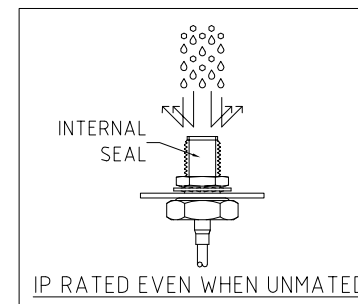
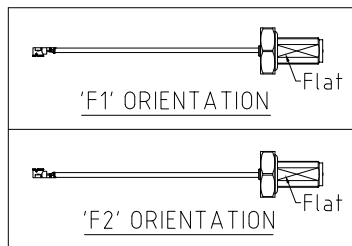
"L" LENGTH IN MM:
eg: 100MM = 0100
(MIN. 0025-MAX.0400
STANDARD = 0100, 0150, 0200)
Tolerance: 50mm: ± 2 mm.
51-200mm: ± 5 mm.
201-400mm: ± 7 mm.






CABLE SIZE:
1 = Ø1.13MM CABLE. COLOR: GRAY.

O-RING MATERIAL OPTIONS:
S = SILICONE, RED
E = EPDM, BLACK (STANDARD)

WASHER AND NUT OPTIONS:
BLANK = SEPARATELY PACKED (STANDARD)
A = ALL ASSEMBLED WITH CONNECTOR

ORIENTATION OPTIONS:
BLANK = DOES NOT HAVE A FIXED ORIENTATION
F1 = MHF CONNECTION DOWN (L= 50-200MM)
F2 = MHF CONNECTION UP (L=50-200MM)
(SEE NOTES 1, 2, 3 AND DIAGRAMS FOR MORE INFORMATION)



| | | | | | | | |
|--|-----------------|---|--|---|--|-----------------------------|---|
| REV. DATE & DRN 0 28/06/73 - NYW RELEASE 1 06/07/73 - NYW ADD SILICONE O-RING MATERIAL 2 30/11/73 - NYW AROUND RATING TO 69K 3 03/02/74 - CC ADD IP RATING VIEW 4 01/03/74 - NYW ADD SILICONE O-RING OPTION | Scale: NTS | THIRD ANGLE | Unstated: X Tolerances: XX N/A XXX N/A ANGLES N/A |  IP Rated RF Products |  www.gradconn.com | Drawing Number: CAB576RF | |
| | Drawn: CC |  | | | | | Sheet 1 of 1 |
| | App'd: XXX | Title CABLE ASSEMBLY | | |  THIS DRAWING IS CONFIDENTIAL AND MUST NOT BE COPIED OR DISCLOSED WITHOUT WRITTEN CONSENT | | Drawing  E and O E |
| | Date: 1 MAR '24 | Revision: 1.4 | Unit: mm | | | | |

Mouser Electronics

Authorized Distributor

Click to View Pricing, Inventory, Delivery & Lifecycle Information:

[GCT:](#)

[CAB576RF-0200-A-1-E](#) [CAB576RF-0300-A-1-E](#) [CAB576RF-0100-A-1-E](#) [CAB576RF-0150-A-1-E](#) [CAB576RF-0050-A-1-E](#)