

**LUMOTAST 16 - Emergency stop pushbutton, active/inactive,
gold contacts, 2 NC**
1.15.213.064/0000



General information

Type Description	E-Stop, active/inactive, illuminable mushroom
Form of lens	conical mushroom form
Color of lens	red
Color of front ring	-
Form of collar	round

Dimensions

Mushroom Diameter	30 mm
Dimensions of collar	ø 25 mm
Overall height	40.8 mm
Mounting depth	18.0 mm
Mounting hole	16.2 mm
Key grid	30 x 30 mm

Mechanical design

NC contact forcibly actuated acc. to IEC 60947-5-1	yes
Mounting	ring nut
Terminals	quick connector 2.8 x 0.5 mm
Torque for nut ring	0.8 - 1.5 Nm
Robustness	100 N
Contact function	latching
Contact materials	Au
Illuminability	Whole Mushroom
Reset	by rotation

Mechanical characteristics

Robustness max.	100 N
-----------------	-------

Electrical characteristics

Contact arrangement	2 NC
Rated voltage min.	0.02 V
Rated voltage max.	35 V
Rated current min.	1 mA
Rated current max.	100 mA
Rated power max.	0.5 W

Electrical characteristics of LED

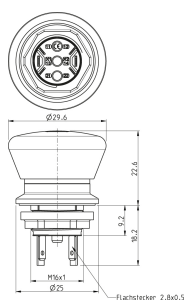
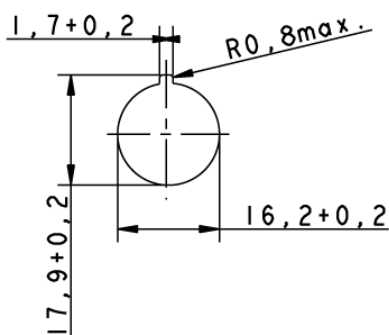
LED operating voltage DC min.	10 V
LED operating voltage max.	28 V

LED operating current min.	8 mA
LED operating current max.	18 mA
LED terminal marking	Anode +, Cathode -

Other specifications

Ambient temp. operating min.	-25 °C
Ambient temp. operating max.	+70 °C
Storage temperature min.	-40 °C
Storage temperature max.	+80 °C
Robustness	acc. to IEC 600 68-2-3 und 2-30
Operating life (operations) / B10	30.000 cycle
Degree of protection from front side	IP65 (DIN EN 60529)
Environmental resistance	acc. to IEC 60068-2-14, -30, -33 and -78
Salt spray	IEC 600 68-2-11
ROHS compliant	yes
REACH compliant	yes

Panel cut-out



Mouser Electronics

Authorized Distributor

Click to View Pricing, Inventory, Delivery & Lifecycle Information:

RAFI:

[1.15.213.064/0000](#)