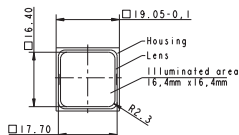
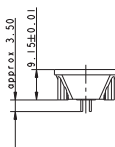


## RF 19 - Signal indicator, 1 x 1-module



Pict.: 1 x 1-module

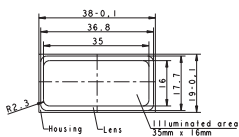
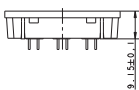
Illumination	Colour of lens	LED colour	LED type	Order no.
fully illuminated 2 LED	red	red	2 mm	<b>3.14.002.051/0000</b>
fully illuminated 2 LED	green	green	2 mm	<b>3.14.002.052/0000</b>
fully illuminated 2 LED	yellow	yellow	2 mm	<b>3.14.002.053/0000</b>
fully illuminated 2 LED	orange	yellow	2 mm	3.14.002.054/0000
fully illuminated 2 LED	blue	blue	2 mm	3.14.001.659/0000

Technical data see page 4 - 76

For technical data of the LED see separate page at the beginning of chapter „RF short-travel keyswitches“

Suitable for RK 90 system design, illuminated for 2-module keycap.

## RF 19 - Signal indicator, 1 x 2-module



Pict.: 1 x 2-module

Illumination	Colour of lens	LED colour	LED type	Order no.
fully illuminated 5 LED	red	red	2 mm	3.14.002.071/0000
fully illuminated 5 LED	green	green	2 mm	3.14.002.072/0000
fully illuminated 5 LED	yellow	yellow	2 mm	3.14.002.073/0000
fully illuminated 5 LED	orange	yellow	2 mm	3.14.002.074/0000

Technical data see page 4 - 76

For technical data of the LED see separate page at the beginning of chapter „RF short-travel keyswitches“

# Mouser Electronics

Authorized Distributor

Click to View Pricing, Inventory, Delivery & Lifecycle Information:

[RAFI:](#)

[3.14.002.051/0000](#) [3.14.002.071/0000](#) [3.14.002.052/0000](#)