

**Signal lamps with integrated neon lamp - 10 mm, round lens,
230 V, yellow lens
1.69.527.104/1402**



General information

Form of lens	round
Color of lens	transparent yellow
Diameter of collar	12.5

Dimensions

Overall height	1.2 mm
Mounting depth	32 mm
Mounting hole	10 mm

Mechanical design

Mounting	pressing into hole
Terminals	quick connector 2.8 x 0.8 mm
Lamp socket	no
Lamp	neon lamp

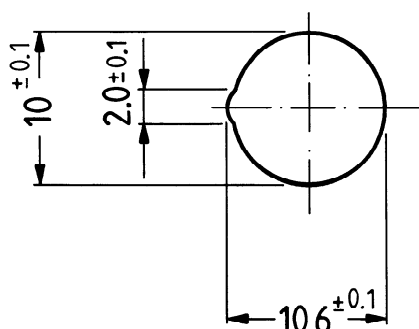
Electrical characteristics

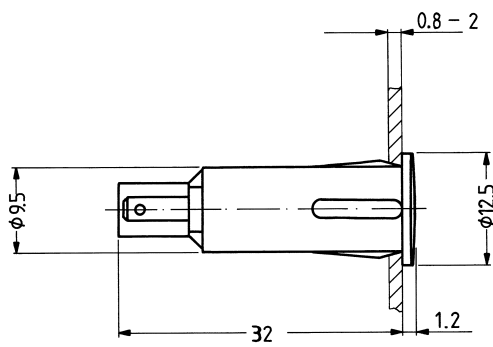
Voltage limit max.	230 V
--------------------	-------

Other specifications

Degree of protection from front side	IP40 (DIN EN 60529)
Weight	2.5 g
ROHS compliant	yes
REACH compliant	yes

Panel cut-out





Mouser Electronics

Authorized Distributor

Click to View Pricing, Inventory, Delivery & Lifecycle Information:

[RAFI:](#)

[1.69.527.104/1402](#)