

**Signal lamps with integrated filament lamp - 5 mm, round lens,  
24 V, green lens  
1.69.508.113/1502**

**General information**

Form of lens	round
Color of lens	transparent green
Diameter of collar	5.8

**Dimensions**

Overall height	1 mm
Mounting depth	18 mm
Mounting hole	5 mm

**Mechanical design**

Mounting	pressing into hole
Terminals	solder terminals
Lamp socket	no
Lamp	filament lamp

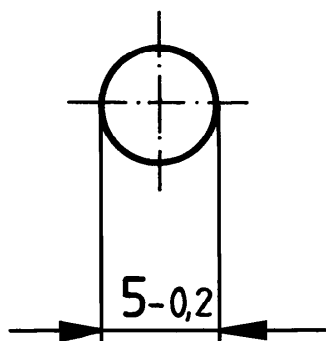
**Electrical characteristics**

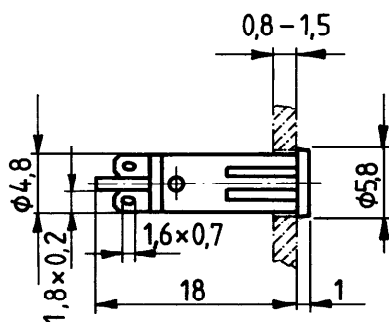
Voltage limit max.	24 V
Power limit max.	0.45 W

**Other specifications**

Operating life	10,000 h
Degree of protection from front side	IP40 (DIN EN 60529)
Weight	0.3 g
ROHS compliant	yes
REACH compliant	yes

Mounting hole





# Mouser Electronics

Authorized Distributor

Click to View Pricing, Inventory, Delivery & Lifecycle Information:

[RAFI:](#)

[1.69.508.113/1502](#)