

Signal lamps with integrated neon lamp - 10 mm, lens in arrow shape, 230 V, red lens

1.69.507.157/1301



General information

Form of lens	arrow formed
Color of lens	transparent red

Dimensions

Length of collar	16 mm
Width of collar	18.2 mm
Overall height	3 mm
Mounting depth	30 mm
Mounting hole	10 mm

Mechanical design

Mounting	pressing into hole
Terminals	quick connector 2.8 x 0.8 mm
Lamp socket	no
Lamp	neon lamp

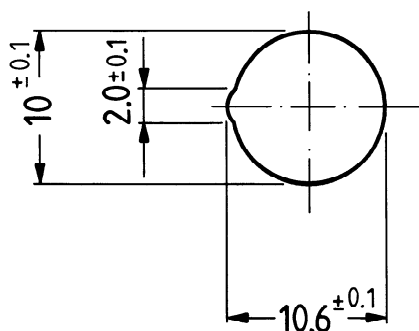
Electrical characteristics

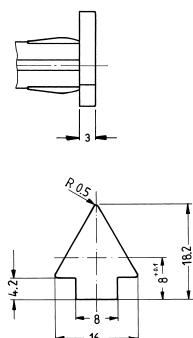
Voltage limit max.	230 V
--------------------	-------

Other specifications

Degree of protection from front side	IP40 (DIN EN 60529)
Weight	2.5 g
ROHS compliant	yes
REACH compliant	yes

Panel cut-out





Mouser Electronics

Authorized Distributor

Click to View Pricing, Inventory, Delivery & Lifecycle Information:

[RAFI:](#)

[1.69.507.157/1301](#)