

## RACON 12 - Tactile switch solder terminals for PCB, inward

**1.14.001.802/0000**

For keycaps, refer to RK 90:



### Dimensions

Length of housing	12 mm
Width of housing	12 mm
Overall height	5.00 mm

### Mechanical design

Mounting	soldering
Terminals	THT inward
Contact system	snap-action contact
Contact arrangement	1 NO
Contact materials	Au
Illumination	no

### Mechanical characteristics

Operating force	4,7 N
Switching travel	0.66 mm

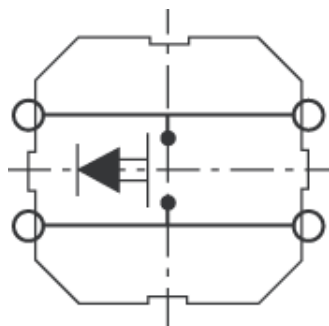
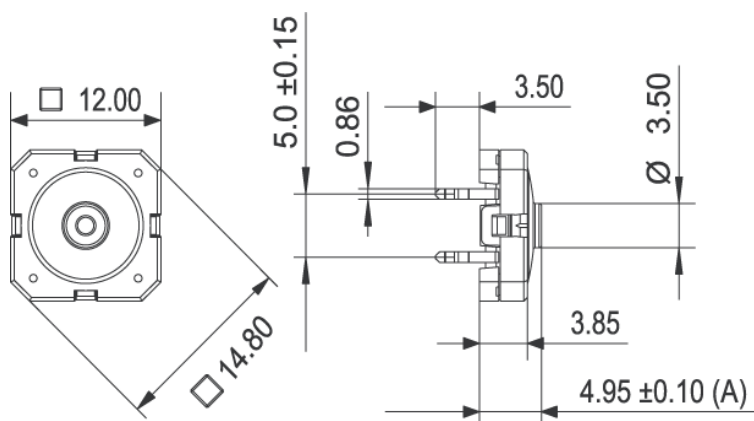
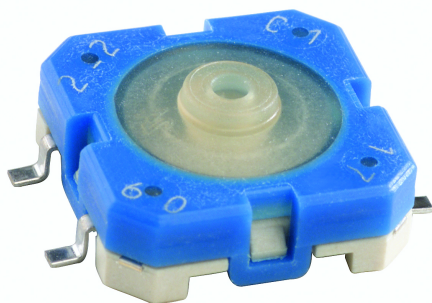
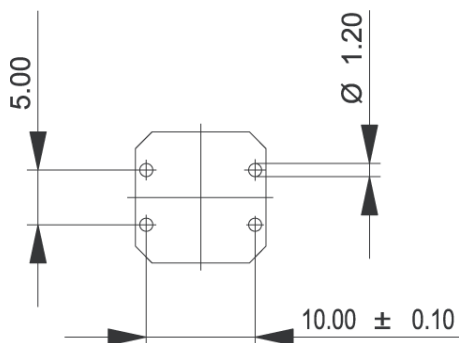
### Electrical characteristics

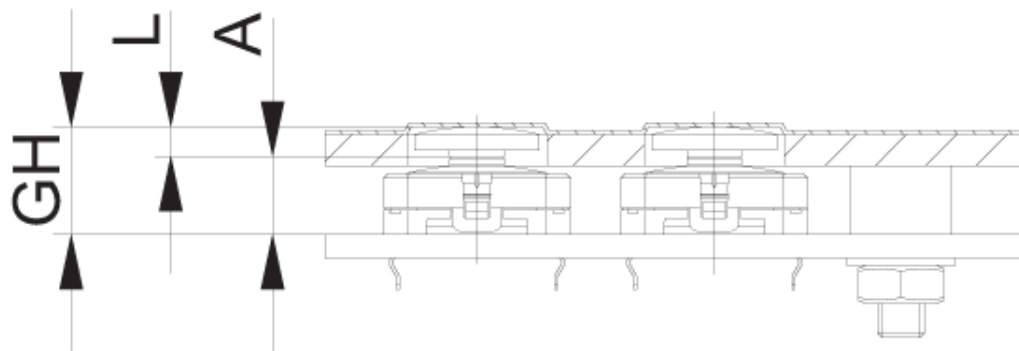
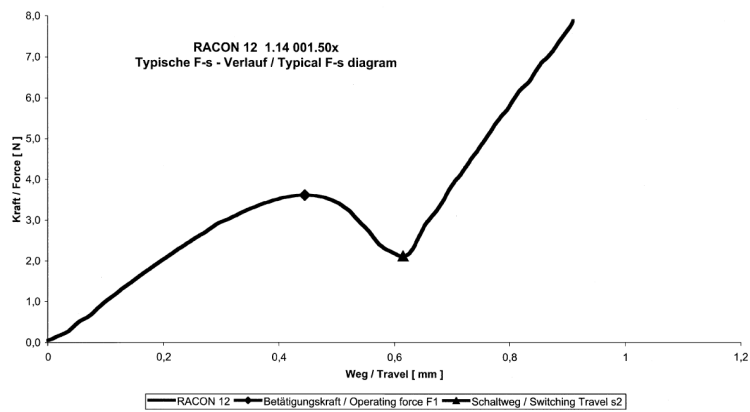
Rated voltage min.	0.02 V
Rated voltage max.	35 V
Rated current min.	0.01 mA
Rated current max.	100 mA
Rated power max. (ohmic load)	1 W
Contact resistance when new max.	100 mΩ
Insulation resistance	10 <sup>9</sup> Ω

### Other specifications

Ambient temp. operating min.	-40 °C
Ambient temp. operating max.	+90 °C
Resistance to environment	DIN EN 60068-2 -14,-30,-33 and -78
Operating life	1,000,000 cycle
Solderability / Solder heat resistance	DIN EN 60068-2-20
Flammability of materials	UL 94 HB
Packing	tubes à 45 pieces
Produkt code	B4
ROHS compliant	yes
REACH compliant	yes

PCB footprint, view on component side





# Mouser Electronics

Authorized Distributor

Click to View Pricing, Inventory, Delivery & Lifecycle Information:

RAFI:

[1.14.001.802/0000](#)