

RAMO 22 T - Pushbutton, yellow, collar square, M8

1.10.010.101/0441



General information

| | |
|---------------------|--------|
| Form | flush |
| Color of front ring | black |
| Form of collar | square |
| Color lens | yellow |

Dimensions

| | |
|---------------|---------|
| Mounting hole | 22.3 mm |
|---------------|---------|

Mechanical design

| | |
|-----------------------------|---------------------------|
| Contact | momentary, 1 NO |
| Contact materials | gold |
| Mounting | ring nut |
| Terminals | M8 |
| Reverse polarity protection | yes |
| Labeling | individually with FLEXLAB |
| Torque for nut ring | 1.2 Nm |

Mechanical characteristics

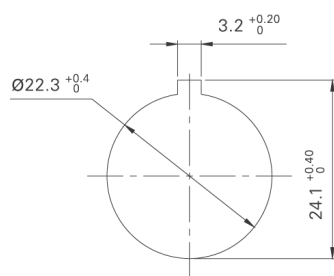
| | |
|------------------------------|-----|
| Operating force F1 (+/-20 %) | 5 N |
|------------------------------|-----|

Electrical characteristics

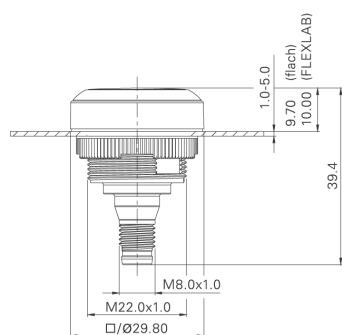
| | |
|--------------------|---------------------------------|
| Rated voltage min. | DC 0.02 V V |
| Rated current min. | 0.01 mA |
| Rated voltage max. | DC 35 V |
| Rated current max. | 100 mA |
| Rated power max. | 1 W (ohmsche Last) W |
| LED power supply | DC 24 V +/- 20% / 10 mA +/- 20% |

Other specifications

| | |
|--------------------------------------|---|
| Ambient temp. operating min. | -40 °C |
| Ambient temp. operating max. | +70 °C |
| B10 | 500,000 cycle |
| Degree of protection from front side | IP 66, IP 67, IP 69K |
| Degree of protection from rear side | IP 66 (je nach verwendetem Stecker IP 67 oder IP 69K) |
| Environmental resistance | acc. to IEC 60068-2-14, -30, -33 and -78 |
| Operating life cycles | 250,000 |
| ROHS compliant | yes |
| REACH compliant | yes |



Einbauöffnung nach IEC 60947-5-1



Mouser Electronics

Authorized Distributor

Click to View Pricing, Inventory, Delivery & Lifecycle Information:

RAFI:

[1.10.010.101/0441](#)