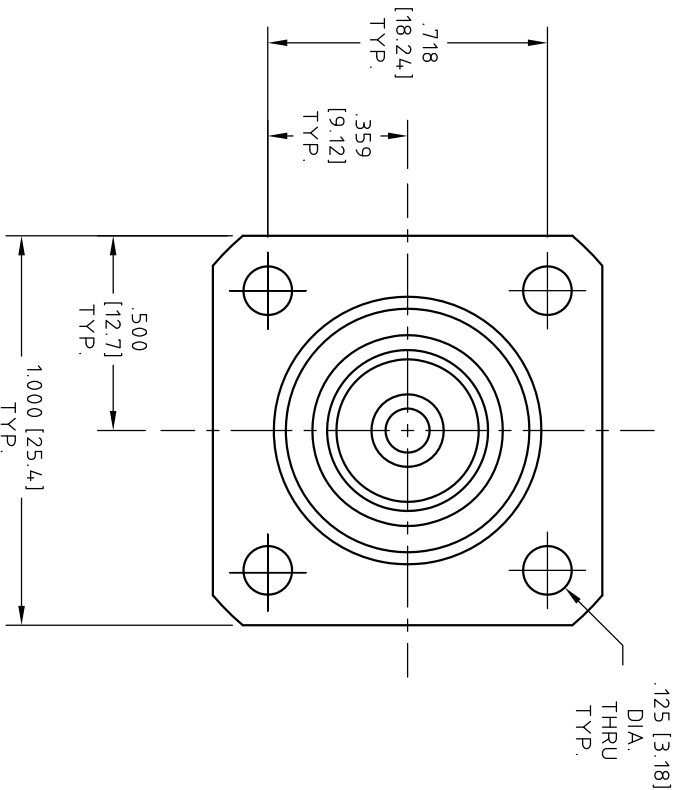


CONTROL DRAWING

29398-3F

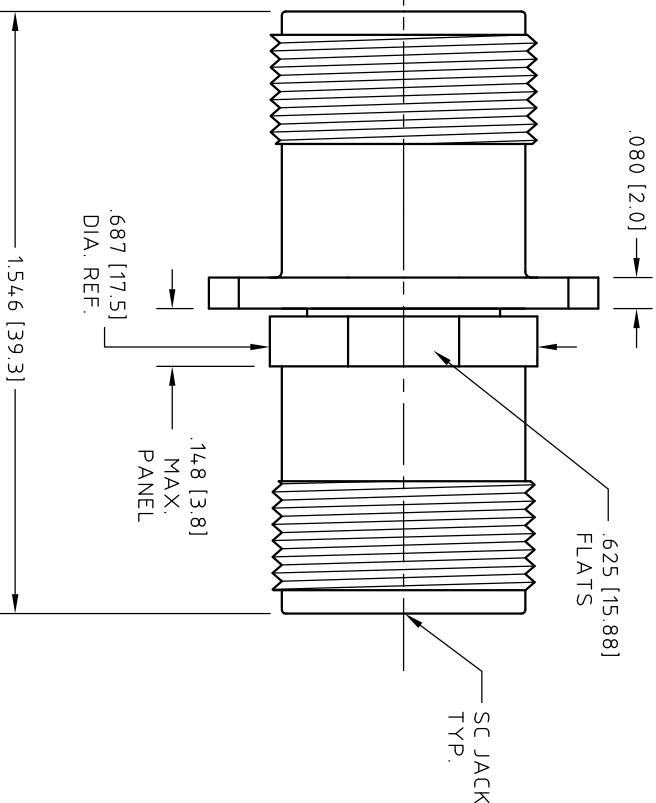


NOTES:

1. DESCRIPTION  
ADAPTOR, SC JACK TO SC JACK, FLANGED.

2. MATERIALS AND FINISHES

BODY AND NUT,  
STEEL, CORROSION RESISTANT PER ASTM A-582,  
UNS NO. S30300, COND. A, NON MAGNETIC,  
PASSIVATED PER SAE-AMS-2700.  
NO DICHROMATE SOLUTIONS USED.  
CENTER CONDUCTOR,  
BERYLLIUM COPPER ALLOY PER ASTM B-196,  
UNS NO. C17300, TEMPER TD04(H),  
GOLD PLATED 50 µIN (1.27 µM) MIN. THK.  
PER ASTM B-488, CODE C, TYPE II, CLASS 1,27  
OVER  
NICKEL PLATE, 50 µIN (1.27 µM) MIN. THK.  
PER SAE-AMS-QQ-N-290, CLASS 1.  
DIELECTRIC,  
POLYTETRAFLUOROETHYLENE (PTFE) PER ASTM D-1770,  
OR ASTM D-4894, TYPE I, GRADE 1, CLASS A.



NOTES CONTINUED:

3. ELECTRICAL CHARACTERISTICS:

IMPEDANCE  
50.0 Ohms NOMINAL.  
FREQUENCY  
11.0 GHz MAX.  
INSERTION LOSS  
0.30 dB MAX.  
VSWR  
1.25 : 1 MAX.


4. INTERFACE MEETS MIL-STD-34.8.

5. OPERATING TEMPERATURE RANGE  
-55° C TO +125° C

ROHS 6 COMPLIANT

F	ECN No. 15315	02/05/13	EF	
REV.	DESCRIPTION	DATE	BY	APPROVED

UNLESS OTHERWISE SPECIFIED CONCENTRICITY .004 T.I.R. CORNERS AND FILLETS .005 MAX. RADIUS OR CHAMFER SURFACE FINISH 63 RMS MICROINCHES OR BETTER.	
FRACTIONS	± 1/16
X	± .030
XX	± .015
XXX	± .005
ANGLES	± 1°
DO NOT SCALE DRAWING	

NAME	DATE		
PREP. M. KEATING	07/08/91		
ELEC.			
MECH.			
Q.C.		THIS DRAWING CONTAINS PATENTABLE AND PROPRIETARY INFORMATION. THE DESIGN CANNOT BE USED WITHOUT WRITTEN PERMISSION OF HUBER + SUHNER ASTROLAB.	
TITLE		ADAPTOR, SC JACK TO SC JACK, FLANGED	
THDS. TO BE IN ACCORD WITH U.S. DEPT. OF COM. SCREW THD. STDS. FOR FEDERAL SERVICES 1950 SUPP. TO HANDBOOK H 28.		SCALE 2:1	CODE IDENT. 16301
		DWG NO. 29398-3F	REV F

# Mouser Electronics

Authorized Distributor

Click to View Pricing, Inventory, Delivery & Lifecycle Information:

[HUBER+SUHNER:](#)

[29398-3F](#)