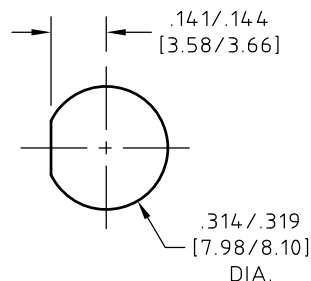


CONTROL DRAWING

29285G

S



PANEL CUT OUT (PC4)

TORQUE MOUNTING NUT
TO 20.0±2.0 IN-LBS.
[2.26±.23 Nm]

NOTES:

1. MATERIALS AND FINISHES

BODY AND MOUNTING NUT,

STEEL, CORROSION RESISTANT PER ASTM A-582,
UNS No. S30300, COND. A, NON MAGNETIC,
PASSIVATED PER SAE-AMS-2700 OR ASTM A-967.
NO DICHROMATE SOLUTIONS USED.

OR

NICKEL PLATED .000100 IN MIN. THK. (2.54 MICRO METERS)
PER SAE-AMS-C-26074 OR ASTM B-733.

CENTER CONDUCTOR,

BERYLLIUM COPPER ALLOY PER ASTM B-196,
UNS No. C17300, TEMPER TD04(H),
GOLD PLATED .000050 IN MIN. THK. (1.27 MICRO METERS)
PER ASTM B-488, CODE C, TYPE II,

OVER

NICKEL PLATE, .000050 IN MIN. THK. PER SAE-AMS-QQ-N-290,
OR ASTM B-689 TYPE 1.

FEEDTHRU BODY AND PIN,

KOVAR PER ASTM F-15 AND F-1466 (MIL-I-23011 CLASS1) UNS K94610
GOLD PLATED .000050 IN MIN. THK. (1.27 MICRO METERS)
PER MIL-C-45204 TYPE III, GRADE A OVER
NICKEL PLATE, .000100 TO .000200 IN THK. PER MIL-C-26074.

FEEDTRU DIELECTRIC,

CORNING No. 7070 GLASS

DIELECTRIC,

POLYTETRAFLUOROETHYLENE (PTFE) PER ASTM D-1710,
OR ASTM D-4894, TYPE I, GRADE 1.

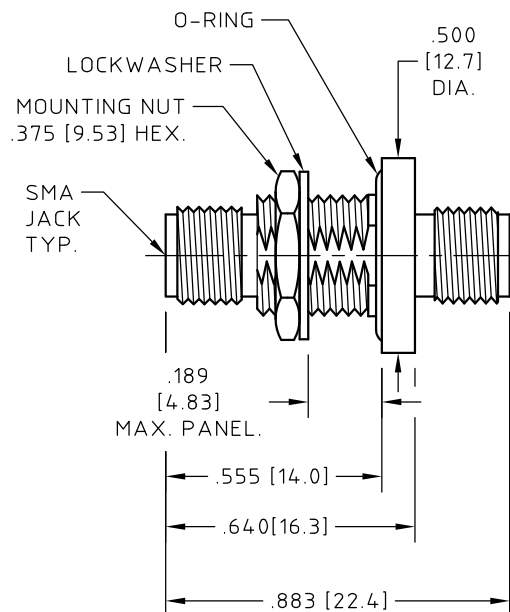
LOCKWASHER,

COPPER ALLOY CDA 425, UNS No. C42500 PER ASTM B-591
OR

COPPER ALLOY CDA 510, UNS No. C51000 PER ASTM B-103,
NICKEL PLATED .000100 IN MIN. THK. (2.54 MICRO METERS)
PER SAE-AMS-C-26074 OR ASTM B-733.

O-RING,

SILICONE RUBBER PER GSA CID A-A-59588-2B
AND SAE-AMS-3304.



NOT RoHS COMPLIANT

NOTES CONTINUED:

2. ELECTRICAL CHARACTERISTICS:

IMPEDANCE

50.0 Ohms NOMINAL.

FREQUENCY

22.0 GHz MAX.

INSERTION LOSS

0.55 dB MAX.

VSWR

1.30 : 1 MAX. AT 10.0 GHz.

1.45 : 1 MAX. AT 22.0 GHz.

3. INTERFACE MEETS MIL-STD-348.

NOTES CONTINUED:

4. OPERATING TEMPERATURE RANGE


-55° C TO +125° C.

5. HERMETIC SEAL:

100% OF CONNECTORS ARE TESTED
PER ASTROLAB PS11606 AND
QUALIFIED FOR LEAKAGE RATES
LESS THAN 1 X 10E-8 CCM/SEC.
OF HELIUM UNDER PRESSURE
DIFFERENTIAL OF 15.00 PSIG, IAW
ASTM E-498, AND MIL-STD-202
AND MIL-STD-883.

UNLESS OTHERWISE SPECIFIED
CONCENTRICITY .004 T.I.R.
CORNERS AND FILLETS .005
MAX. RADIUS OR CHAMFER.
SURFACE FINISH 63 RMS
MICROINCHES OR BETTER.

FRACTIONS	± 1/16
X	± .030
XX	± .015
XXX	± .005
ANGLES	± 1°
DO NOT SCALE DRAWING	

NAME		DATE	 HUBER+SUHNER Astrolab
PREP.			
ELEC.			
MECH.			
Q.C.			
TITLE			THIS DRAWING CONTAINS PATENTABLE AND PROPRIETARY INFORMATION. THE DESIGN CANNOT BE USED WITHOUT WRITTEN PERMISSION OF HUBER + SUHNER ASTROLAB.
ADAPTOR, SMA JACK TO SMA JACK, BULKHEAD, HERMETIC			
THDS. TO BE IN ACCORD WITH U.S. DEPT. OF COMM. SCREW THD. STDs. FOR FEDERAL SERVICES 1950 SUPL. TO HANDBOOK H 28.	SCALE 2:1	CODE IDENT. 16301	DWG NO. 29285G
			REV S

S	"RoHS" UPDATED	01/30/18	EF	
REV.	DESCRIPTION	DATE	BY	APPROVED

Mouser Electronics

Authorized Distributor

Click to View Pricing, Inventory, Delivery & Lifecycle Information:

[HUBER+SUHNER:](#)

[29285G](#)