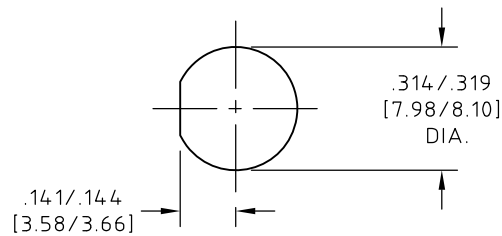


CONTROL DRAWING

29085

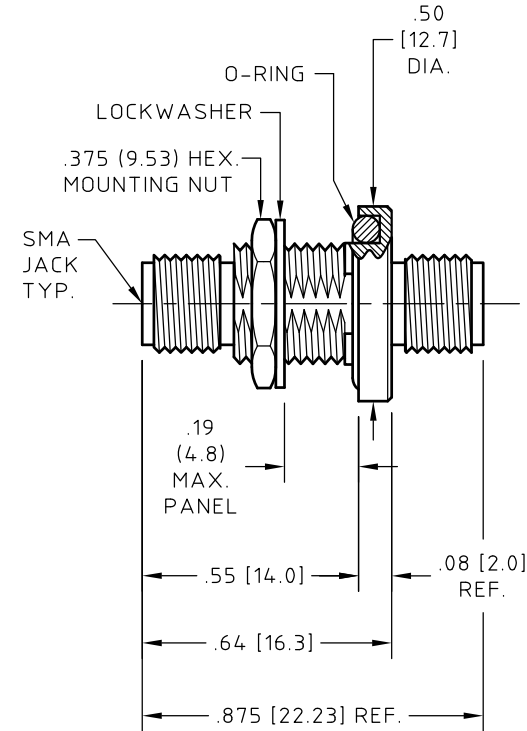
Q



PANEL CUT OUT
HUBER+SUHNER Astrolab
REFERENCE "PC4"
TORQUE MOUNTING NUT
TO 20±2 IN-LBS [2.96±.3 Nm]


NOTES:

- DESCRIPTION,
ADAPTOR, SMA JACK TO SMA JACK, BULKHEAD.
- MATERIALS AND FINISHES
BODY AND MOUNTING NUT,
STEEL, CORROSION RESISTANT PER ASTM A-582,
UNS No. S30300, COND. A, NON MAGNETIC,
PASSIVATED PER SAE-AMS-2700.
NO DICHROMATE SOLUTIONS USED.
CENTER CONDUCTOR,
BERYLLIUM COPPER ALLOY PER ASTM B-196,
UNS No. C17300, TEMPER TD04(H),
GOLD PLATED 50 µIN (1.27 µM) MIN. THK.
PER ASTM B-488, CODE C, TYPE II, CLASS 1.27
OVER
NICKEL PLATE, 50 µIN (1.27 µM) MIN. THK.
PER SAE-AMS-QQ-N-290, CLASS 1.
DIELECTRIC,
POLYTETRAFLUOROETHYLENE (PTFE) PER ASTM D-1710,
OR ASTM D-4894, TYPE I, GRADE 1, CLASS A.
LOCKWASHER,
COPPER ALLOY UNS No. C425xxSERIES PER ASTM B-591 OR
COPPER ALLOY UNS No. C51xxx SERIES PER ASTM B-103,
NICKEL PLATED 100 µIN MIN. THK. (2.54 µM)
PER SAE-AMS-C-26074 OR ASTM B-733.
O-RING,
SILICONE RUBBER PER GSA CID A-A-59588-2B
AND SAE-AMS-3304.
- ELECTRICAL CHARACTERISTICS:
IMPEDANCE
50.0 Ohms NOMINAL.
FREQUENCY
18.0 GHz MAX.
INSERTION LOSS
0.25 dB MAX.
VSWR
1.15 : 1 MAX.
- INTERFACE MEETS MIL-STD-348.
- OPERATING TEMPERATURE RANGE
-55° C TO +125° C.



UNLESS OTHERWISE SPECIFIED
CONCENTRICITY .004 T.I.R.
CORNERS AND FILLETS .005
MAX. RADIUS OR CHAMFER.
SURFACE FINISH 63 RMS
MICROINCHES OR BETTER.

FRACTIONS	± 1/16
X	± .030
XX	± .015
XXX	± .005
ANGLES	± 1°
DO NOT SCALE DRAWING	

NAME		DATE		<div>HUBER+SUHNER Astrolab</div> <div>THIS DRAWING CONTAINS PATENTABLE AND PROPRIETARY INFORMATION. THE DESIGN CANNOT BE USED WITHOUT WRITTEN PERMISSION OF HUBER + SUHNER ASTROLAB.</div>	
PREP.					
ELEC.					
MECH.					
Q.C.					
TITLE					
ADAPTOR, SMA JACK TO SMA JACK, BULKHEAD.					
THDS. TO BE IN ACCORD WITH U.S. DEPT. OF COMM. SCREW THD. STDS. FOR FEDERAL SERVICES 1950 SUPL. TO HANDBOOK H 28.		SCALE	CODE IDENT.	DWG NO.	REV
		2:1	16301	29085	Q

Mouser Electronics

Authorized Distributor

Click to View Pricing, Inventory, Delivery & Lifecycle Information:

[HUBER+SUHNER:](#)

[29805](#)