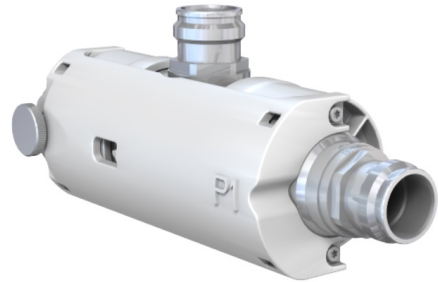


Power Tapper 97131271

Description

Installation Equipment for Special Communication Antennas:
Multi-band Low Loss Power Tapper 380-960/1695-2700/3400-3800/4920-5920
Continuously Adjustable Splitting Ratio 5-20dB



Technical Data

Mechanical Data

Environmental Data

For indoor and outdoor use.

Related Documents

Mounting instruction	DOC-0000882932
Security instruction	DOC-0000278984

Power Tapper 97131271

2-way Tapper 380–960/1695–2700/3400–3800/4920–5920

Type No.		97131271
Frequency range	MHz	380 960 1695 2700 3400 3800 4920 5920
Power ratio between outputs (P_2 / P_1)	dB	–5 to –20 continuously adjustable
For connecting ... antennas		2
Insertion loss	dB	380 960 MHz: < 0.2 1695 2700 MHz: < 0.2 3400 3800 MHz: < 0.5 4920 5920 MHz: < 0.7
Impedance		50
VSWR		380 960 MHz: < 1.5 1695 2700 MHz: < 1.5 3400 3800 MHz: < 1.7 4920 5920 MHz: < 1.7
Intermodulation IM3	dBc	380 960 MHz: < 150 (2 x 43 dBm carrier) 1695 2700 MHz: < 150 (2 x 43 dBm carrier) 3400 3800 MHz: < 150 (2 x 43 dBm carrier) 4920 5920 MHz: not relevant
Max. power	W	100 (at 50 °C ambient temperature)
Connector		4.3-10 female
Weight	Kg lb	0.4 0.9
Environmental conditions		Indoor, outdoor use
Protection class		IP 65
Profile diameter	mm inches	50 2.0
Packing size	mm inches	225 x 80 x 62 8.9 x 5.0 x 2.4
Max. size (including connectors)	mm inches	160 / 63 / 52 6.3 / 2.5 / 2.0

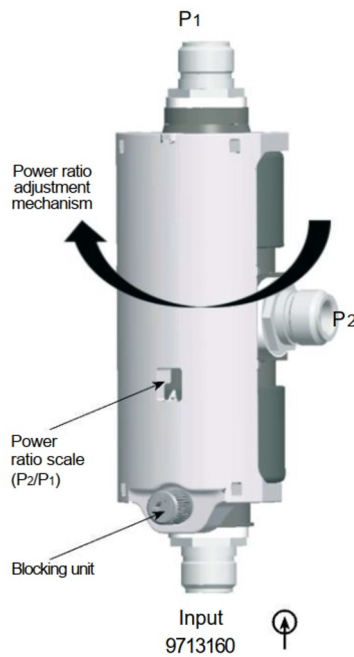
Material: Housing: Aluminum.

Inner conductor: Brass.

DC capability: DC transmission only between input and port P1.

Splitting table (typical values)

P_2 / P_1 [dB]	Splitting ratio P_1 / P_2	Splitting P_1 / P_{Input} [dB]	Attenuation P_2 / P_{Input} [dB]
–5	3.2	–1.3	–6.3
–6	4	–1.05	–7.05
–7	5	–0.85	–7.85
–8	6.3	–0.7	–8.7
–9	8	–0.6	–9.6
–10	10	–0.5	–10.5
–11	12.6	–0.4	–11.4
–12	15.8	–0.35	–12.35
–13	20	–0.25	–13.25
–14	25.1	–0.2	–14.2
–15	31.6	–0.15	–15.15
–16	39.8	–0.14	–16.14
–17	50.1	–0.12	–17.12
–18	63.1	–0.11	–18.11
–19	79.4	–0.1	–19.1
–20	100.0	–0.09	–20.09



Mouser Electronics

Authorized Distributor

Click to View Pricing, Inventory, Delivery & Lifecycle Information:

[HUBER+SUHNER:](#)

[97131271](#)