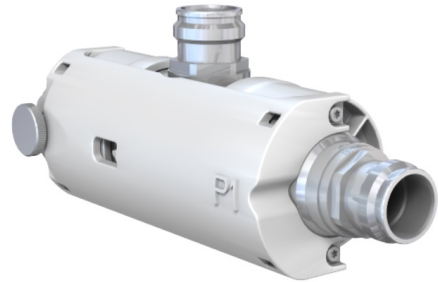


Power Tapper 97121271

Description

Installation Equipment for Special Communication Antennas:
Multi-band Low Loss Power Tapper 380-960/1695-2700/3400-3800/4920-5920
Continuously Adjustable Splitting Ratio 5-20dB



Technical Data

Mechanical Data

Environmental Data

For indoor and outdoor use.

Related Documents

Security instruction

DOC-0000278984

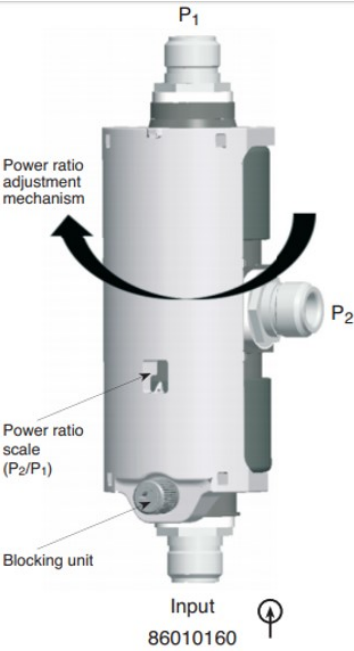
Power Tapper
97121271

2-way Tapper 380–960/1695–2700/3400–3800/4920–5920

Type No.	97121271
Frequency range	380 – 960 MHz 1695 – 2700 MHz 3400 – 3800 MHz 4920 – 5920 MHz
Power ratio between outputs (P ₂ / P ₁)	–5 dB to –20 dB continuously adjustable
For connecting ... antennas	2
Insertion loss	380 – 960 MHz: < 0.2 dB 1695 – 2700 MHz: < 0.2 dB 3400 – 3800 MHz: < 0.5 dB 4920 – 5920 MHz: < 0.7 dB
Impedance	50 Ω
VSWR	380 – 960 MHz: < 1.5 1695 – 2700 MHz: < 1.5 3400 – 3800 MHz: < 2.0 4920 – 5920 MHz: < 2.3
Intermodulation IM3	< –150 dBc (2 x 43 dBm carrier)
Max. power	100 W (at 50 °C ambient temperature)
Connector	N female
Weight	0.5 kg
Environmental conditions	Indoor, outdoor use
Protection class	IP 65
Profile diameter	50 mm
Packing size	190 x 80 x 60 mm
Max. size	160 / 70 / 55 mm (including connectors)

Material: Housing: Aluminum.
Inner conductor: Brass.

DC capability: DC transmission only between input and port P₁.



Splitting table (typical values)

P ₂ / P ₁ [dB]	Splitting ratio P ₁ / P ₂	Splitting attenuation	
		P ₁ / P _{Input} [dB]	P ₂ / P _{Input} [dB]
–5	3.2	–1.3	–6.3
–6	4	–1.05	–7.05
–7	5	–0.85	–7.85
–8	6.3	–0.7	–8.7
–9	8	–0.6	–9.6
–10	10	–0.5	–10.5
–11	12.6	–0.4	–11.4
–12	15.8	–0.35	–12.35
–13	20	–0.25	–13.25
–14	25.1	–0.2	–14.2
–15	31.6	–0.15	–15.15
–16	39.8	–0.14	–16.14
–17	50.1	–0.12	–17.12
–18	63.1	–0.11	–18.11
–19	79.4	–0.1	–19.1
–20	100.0	–0.09	–20.09

Mouser Electronics

Authorized Distributor

Click to View Pricing, Inventory, Delivery & Lifecycle Information:

[HUBER+SUHNER:](#)

[97121271](#)