

Low Loss 2-way Wilkinson Splitter, 694 MHz - 2700 MHz 5502.17.0030

Wilkinson Splitter

Description

This Wilkinson style Power Divider has been designed for 50W low power applications where output isolation is preferable over lowest possible loss. The wide frequency range of this design allows use with multiband antennas and leaky cable systems. Lower loss dividers which enhance receive sensitivity and preserve transmitted power are available as reactive splitters. Supports LTE, UMTS/WCDMA, TD-SCDMA, AMPS, GSM, PCS, CDMA, WiFi / WLAN 2.4 GHz. Meets EN50155:2007 (Class T3).



Technical Data

Electrical Data

	Signal Band 1
Frequency	0.694 - 2.7 GHz
Return Loss input port	19 dB
Return Loss output port	19 dB
Splitter Loss	3 dB
Insertion Loss	3.6 dB
Isol. between Output ports	20 dB
Ampl. tra. betw. outp. ports	0.3 dB
Max. Composite Power	50 W

	Input 1
Connector Type	N
Connector Gender	jack (female)

	Output 1	Output 2
Connector Type	N	N
Connector Gender	jack (female)	jack (female)

Char. impedance	50 Ω
-----------------	------

Mechanical Data

Dimensions	26 x 46 x 61 mm (Height x Width x Length)
Weight	0.185 kg

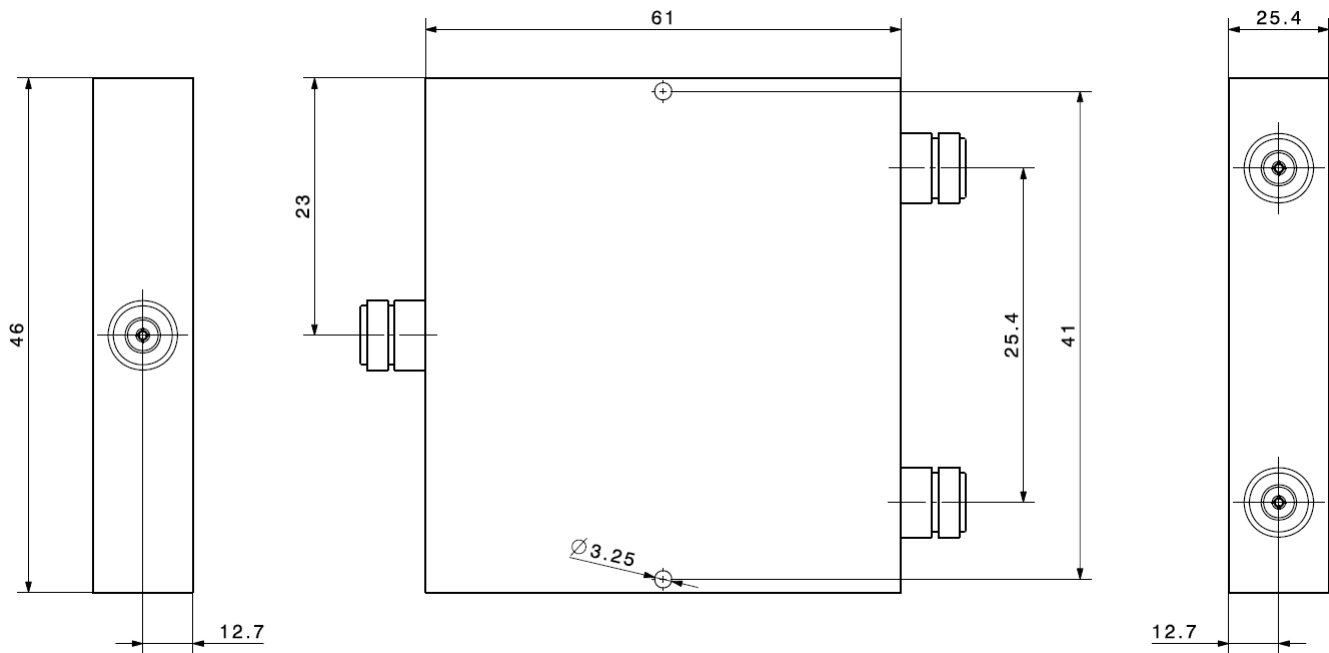
Environmental Data

Environmental conditions	indoor
Operation temperature	-30 °C to 70 °C
Storage temperature	-50 °C to 70 °C
2011/65/EU (RoHS - including 2015/863 and 2017/2102)	compliant

Related Documents

Outline drawing	DPR-00172365
3D-model (Step)	DOC-0000369310

Low Loss 2-way Wilkinson Splitter, 694 MHz - 2700 MHz 5502.17.0030



Mouser Electronics

Authorized Distributor

Click to View Pricing, Inventory, Delivery & Lifecycle Information:

HUBER+SUHNER:

5502.17.0030