

## 10:1 Unequal Power Divider

### 5501.31.0010

#### Tapper

#### Description

This tapper unevenly splits high power cellular signals in the ratio 10:1 with minimal reflections or loss over the wireless bands in the range 350 - 2700 MHz, (no coupling 960 to 1710 MHz). The innovative asymmetric design ensures an excellent input VSWR and coupling flatness across the band.

The lightweight design allows easy attachment to a wall using the supplied bracket. Designed with only a few solder joints and an air dielectric, loss is minimized and reliability enhanced.

It supports public safety and cellular bands, as well as WiFi 2.4.



#### Technical Data

##### Electrical Data

	Band 1	Band 2	Band 3
Frequency (GHz)	0.35 - 0.96	1.71 - 1.8	1.8 - 2.7
Return Loss (dB)	20.8	17.6	20.8
Tapp Loss (dB)	10	10	10
Tapp Loss flatness +/- (dB)			
Insertion Loss (dB)	0.4	0.4	0.4
Max. Composite Power (W)	300	300	300
Peak Envelope Power (W)	2000	2000	2000
Intermodulation distortion (dBc)	-161	-161	-161
@ 2 x Carrier Power (dBm)	43	43	43

	Main Line In	Main Line Out	Tap Port
Port Designation	IN	OUT	10 dB
Connector Type	4.3-10	4.3-10	4.3-10
Gender	jack (female)	jack (female)	jack (female)

Char. impedance 50 Ω

##### Mechanical Data

Dimensions 32 x 89 x 32 mm (Height x Width x Length)  
Weight 0.42 kg

##### Environmental Data

Environmental conditions indoor/outdoor  
Operation temperature -40 °C to 75 °C  
Storage temperature -40 °C to 75 °C  
Transport temperature -40 °C to 75 °C  
IP rating IP67  
2011/65/EU (RoHS - including 2015/863 and 2017/2102) compliant

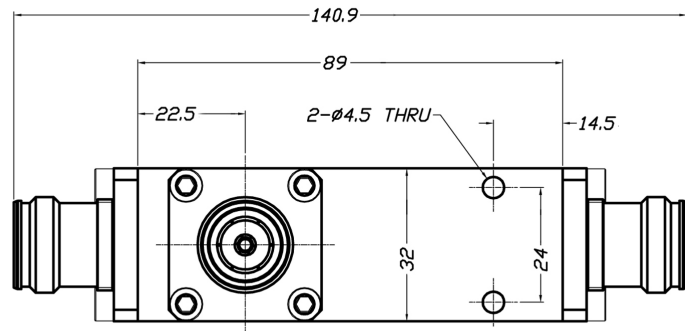
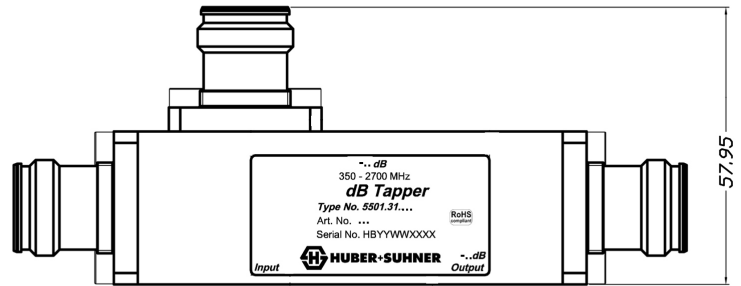
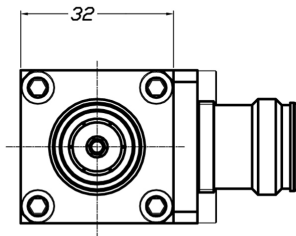
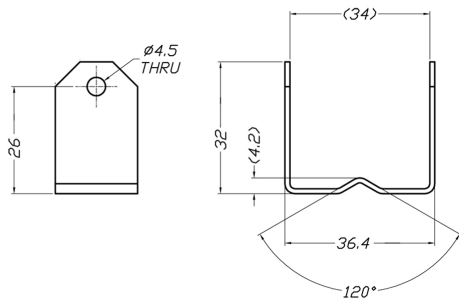
##### Material Data

Housing Material Aluminium  
Surface treatment Black paint

##### Related Documents

Outline drawing DOU-00374772

## 10:1 Unequal Power Divider 5501.31.0010



# Mouser Electronics

Authorized Distributor

Click to View Pricing, Inventory, Delivery & Lifecycle Information:

[HUBER+SUHNER:](#)

[5501.31.0010](#)