

## EMP Protector 3400.41.0267

### Description

Quarter-wave stub technology

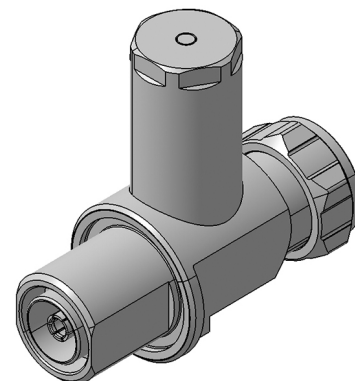
#### Benefits

Broad-band design

The protector can also be installed reversely

Multi-band operation

Compliant to IEC 61643-21



### Product Configuration

Main path connectors  
Mounting and grounding  
Side of bulkhead

Port 1: unprotected, 7/16 plug (male) - Port 2: protected, 7/16 jack (female)  
MH110 (bulkhead mounting), M8 (screw), brk (bracket)  
protected side

### Technical Data

#### Electrical Data

Impedance	50 $\Omega$	
Frequency range	690 - 2690 MHz	
Return loss	$\geq 26$ dB	
Insertion loss	0.1 dB typ.	$\leq 0.1$ dB
RF CW power	$\leq 1500$ W	
PIM 3rd order	-160 dBc max.	

Surge current handling capability	100 single / 80 kA multiple kA (test pulse 8/20 $\mu$ s)
Residual pulse energy	11 $\mu$ J typically (test pulse 4 kV 1.2/50 $\mu$ s / 2 kA 8/20 $\mu$ s) main path - protected side

#### Mechanical Data

Number of matings	500
Weight	476 g

#### Environmental Data

Operating temperature	-40 °C to +85 °C
Waterproof degree	IP67 (according to IEC 60529, data refer to the coupled state)
2011/65/EU (RoHS - including 2015/863 and 2017/2102)	compliant acc. Annex III

#### Material Data

Piece Parts	Material	Surface Plating
Housing	Brass	SUCOPLATE (R) Plating
Port 1 center contact	Brass	Silver Plating
Port 2 center contact	Bronze	Silver Plating

### Related Documents

Outline drawing	DOU-00205247
Mounting instruction	DOC-0000176104

# Mouser Electronics

Authorized Distributor

Click to View Pricing, Inventory, Delivery & Lifecycle Information:

HUBER+SUHNER:

3400.41.0267