

EMP Protector 3400.41.0257

Description

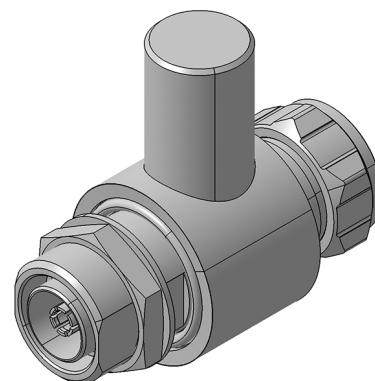
Quarter-wave stub technology

Benefits

Multi-band operation

The protector can also be installed reversely

Compliant to IEC 61643-21



Product Configuration

Main path connectors
Mounting and grounding
Side of bulkhead

Port 1: unprotected, 7/16 plug (male) - Port 2: protected, 7/16 jack (female)
MH110 (bulkhead mounting), M8 (screw), brk (bracket)
protected side

Technical Data

Electrical Data

Impedance	50 Ω		
Frequency range	790 - 2620 MHz	824 - 960 MHz	1710 - 2200 MHz
Return loss	≥ 20.8 dB	≥ 24 dB	≥ 24 dB
Insertion loss	≤ 0.1 dB	≤ 0.1 dB	≤ 0.1 dB
RF CW power	≤ 1000 W		
PIM 3rd order	-150 dBc typ.		

Surge current handling capability	80 single / 60 multiple kA (test pulse 8/20 μ s)
Residual pulse energy	9 μ J typically (test pulse 4 kV 1.2/50 μ s / 2 kA 8/20 μ s) main path - protected side

Mechanical Data

Number of matings	100
Weight	247 g

Environmental Data

Operating temperature	-40 °C to +85 °C
Waterproof degree	IP68 (according to IEC 60529, data refer to the coupled state)
2011/65/EU (RoHS - including 2015/863 and 2017/2102)	compliant

Material Data

Piece Parts	Material	Surface Plating
Housing	Aluminium	Chromatized
Port 1 center contact	Brass	Silver Plating
Port 2 center contact	Bronze	Silver Plating

Related Documents

Outline drawing	DOU-00115333.1
Mounting instruction	DOC-0000447876

Remarks

Ordering information for optional stainless steel mounting/grounding accessory:

9075.99.0108: threaded stud M8, length 30mm, hexagonal nut M8, washer and tooth washer

Recommendation: if this protector is mated with connectors made of copper-alloy base material and trimetal or nickel plating the connector area must be taped to improve long-term durability.

EMP Protector 3400.41.0257

Mouser Electronics

Authorized Distributor

Click to View Pricing, Inventory, Delivery & Lifecycle Information:

HUBER+SUHNER:

3400.41.0257