

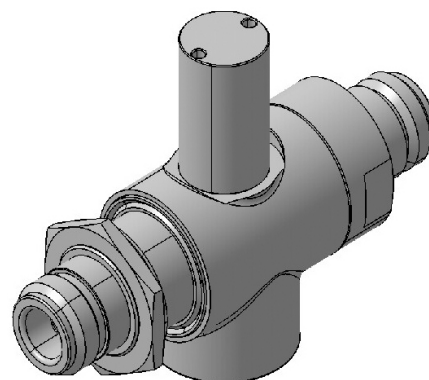
## EMP Protector 3400.17.0416

### Description

Quarter-wave stub technology

#### Benefits

The protector can also be installed reversely  
Multi-band operation  
Compliant to IEC 61643-21



### Product Configuration

Main path connectors Port 1: unprotected, N jack (female) - Port 2: protected, N jack (female)  
Mounting and grounding MH25 (bulkhead mounting), M8 (screw), brk (bracket)

### Technical Data

#### Electrical Data

Impedance	50 $\Omega$		
Frequency range	1000 - 2900 MHz	1000 - 1100 MHz	2700 - 2900 MHz
Return loss		$\geq 20$ dB	$\geq 20$ dB
Insertion loss		$\leq 0.1$ dB	$\leq 0.1$ dB
RF CW power		$\leq 750$ W	$\leq 450$ W
PIM 3rd order	not specified	not specified	not specified
Surge current handling capability	50 multiple kA (test pulse 8/20 $\mu$ s)		
Residual pulse energy	5 $\mu$ J typically (test pulse 4 kV 1.2/50 $\mu$ s / 2 kA 8/20 $\mu$ s) main path - protected side		

#### Mechanical Data

Number of matings	500
Weight	300 g

#### Environmental Data

Operating temperature	-40 °C to +85 °C
Waterproof degree	IP65 (according to IEC 60529, data refer to the coupled state)
2011/65/EU (RoHS - including 2015/863 and 2017/2102)	compliant

#### Material Data

Piece Parts	Material	Surface Plating
Housing	Brass	SUCOPLATE (R) Plating
Port 1 center contact	Copper Beryllium Alloy	Gold Plating (without Nickel underplating)
Port 2 center contact	Copper Beryllium Alloy	Gold Plating (without Nickel underplating)

### Related Documents

Outline drawing	DOU-00073736.1
Mounting instruction	DOC-0000176104

# Mouser Electronics

Authorized Distributor

Click to View Pricing, Inventory, Delivery & Lifecycle Information:

[HUBER+SUHNER:](#)

[3400.17.0416](#)