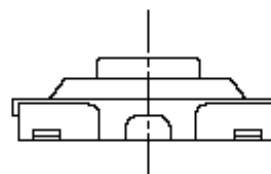
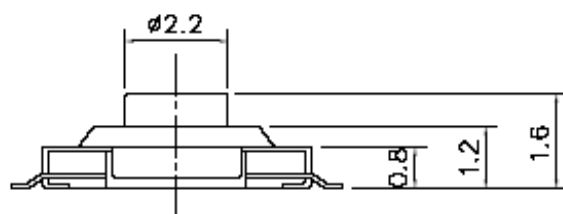
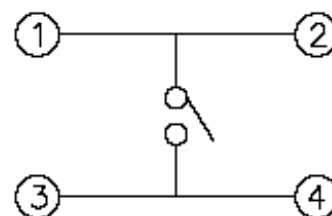
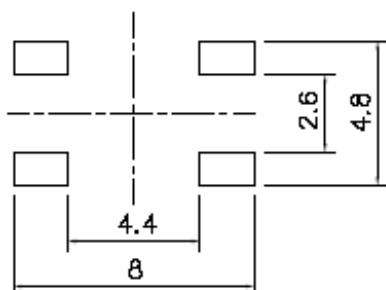


CIRCUIT DIAGRAM



P.C.B LAND DIMENSION



SPECIFICATIONS

1. RATING : DC 12V, 50mA Max
2. CIRCUIT : 1C - 1P
3. OPERATING FORCE : 160 ± 30 gf, 250 ± 50 gf
4. CONTACT RESISTANCE₀: 100m Ω Max
5. TRAVEL : 0.25 ± 0.1 mm
6. LIFE : 100,000Cycles Min
7. TOLERANCE : ± 0.2

NO	DESCRIPTION	MATERIAL	SPECIFICATION			TREATMENT		REMARK
4			APPROVAL	CHECK	DESIGN	TITLE	TACT SWITCH	
3							KPT-1187B	
2								
1						DRAW' No		
MARK	DATE	REVISION	SIGN					

Mouser Electronics

Authorized Distributor

Click to View Pricing, Inventory, Delivery & Lifecycle Information:

[SparkFun Electronics:](#)

[COM-08720](#)