

# Qwiic Micro - SAMD21E (DEV-15423)

## Arduino Tips

analogWriteResolution(10) - to update PWM (0-1023)  
analogReadResolution(12) - to update ADC (0-4095)

Pin name	Port
Power	Analog
Ground	Serial
Control	PWM
Arduino	Misc

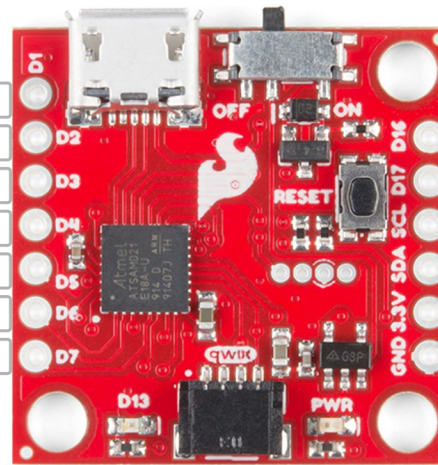
DAC	A0	PA02	D1	D1	RESET	CONTROL		
MOSI	A1	PA06	D2	D2	D16	D16	PA23	TX
MISO	A2	PA05	D3	D3	D17	D17	PA22	RX
SCK	A3	PA07	D4	D4	SCL	D8	PA09	SCL
CS	A4	PA10	D5	D5	SDA	D0	PA08	SDA
AREFB	A5	PA04	D6	D6	3.3V	3.3V		
			D7	D7	GND	GND		

D13	
D13	
LED	

SWDIO	D23	PA30
SWCLK	D22	PA31
GND	GND	
RESET	CONTROL	



## Power

VBatt: 3V-6V  
VUSB: 5V  
VCC: 3.3V @600mV  
Power Switch  
JST connector on backside

## SAMD21E

ARM Cortex-M0+ @48MHz  
VCC: 1.62V-3.63V  
256KB Flash/32KB SRAM  
(plus 4Mb SPI Flash chip)  
4 Sercom ports  
12-bit ADC  
10-bit DAC

## LEDs/Misc Pins

Power LED: Red  
Stat LED: Blue  
Qwiic Connector (I2C)  
(SDA:D0, SCL:D8)  
W25Q32FV 4Mb flash  
(MOSI:D2, SCK:D4,  
MISO:D3, SS:D5)

  
**sparkfun.com**



# Mouser Electronics

Authorized Distributor

Click to View Pricing, Inventory, Delivery & Lifecycle Information:

[SparkFun Electronics:](#)

[DEV-15423](#)