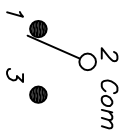
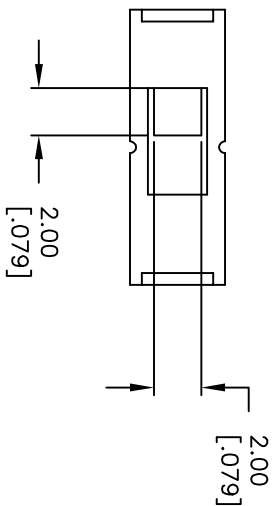


RECOMMENDED P.C.B. LAYOUT
NOT TO SCALE

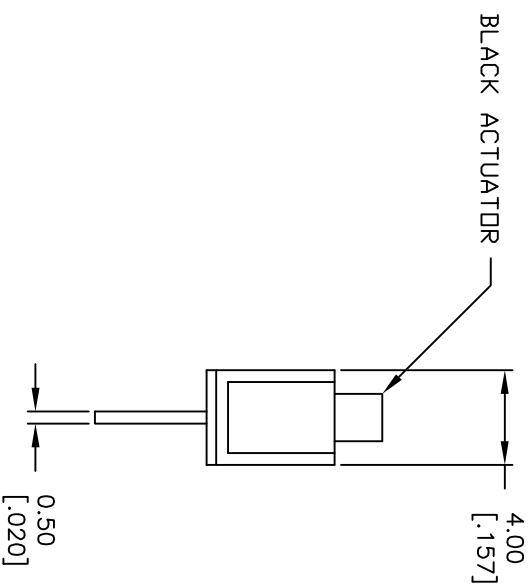
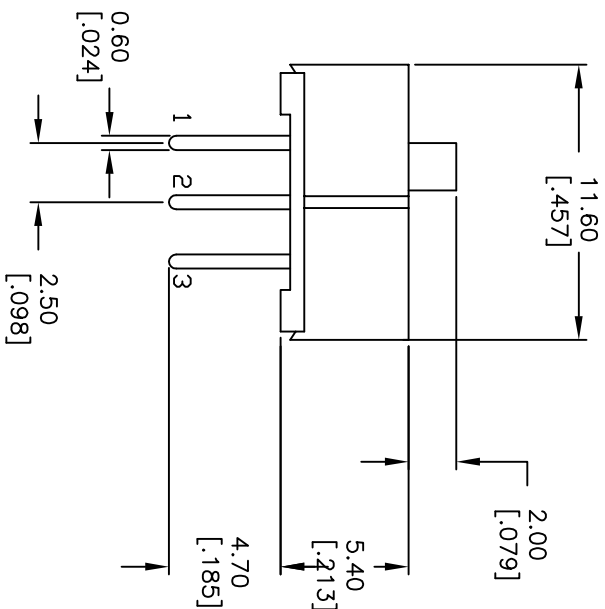


CIRCUIT: SPDT

TIMING: NON SHORTING

NOTES:

1. ALL DIMENSIONS IN MM [INCH]
2. GENERAL TOLERANCE: X.X=±0.4
X.XX=±0.25
3. TERM. NOS. FOR REFERENCE ONLY.
4. ELECTRICAL RATING: 0.2A @30VDC
5. CONTACT MATERIAL: Copper Alloy W/Silver Plating
6. OPERATING FORCE: 250±100gf
7. TRAVEL: 2.5mm
8. CONTACT RESISTANCE: 50MILLI-OHMS Max.
9. DIELECTRIC STRENGTH: 500V RMS@ SEA LEVEL.
10. INSULATION RESISTANCE: 100Mega-OHMS Min.
11. OPERATING TEMP.: -20°C to 70°C



| | | | | | | | | | | | |
|------|--|--|--|--|----------------------------|----------|------|-----------|--|--|--|
| C | | | | 17823 | ADDED TERMINAL LENGTH DIM. | 10/30/07 | BF | TITLE | | | |
| B | | | | 11770 | REVISED AND REDRAWN | 10/22/01 | CJB | EG1218 | | | |
| REV. | | | | ECN NO. | DESCRIPTION | DATE | CHKD | E-SWITCH® | | | |
| | | | | THE INFORMATION CONTAINED IN THIS DOCUMENT IS PROPRIETARY TO E-SWITCH AND IS NOT TO BE COPIED OR TRANSFERRED | | | | SCALE | | | |
| | | | | | | | | | | | |
| | | | | | | | | 3:1 | | | |
| | | | | | | | | DATE | | | |
| | | | | | | | | 10/30/07 | | | |
| | | | | | | | | DR | | | |
| | | | | | | | | BF | | | |
| | | | | | | | | DWG | | | |
| | | | | | | | | P040040 | | | |
| | | | | | | | | REV | | | |
| | | | | | | | | C | | | |

Mouser Electronics

Authorized Distributor

Click to View Pricing, Inventory, Delivery & Lifecycle Information:

[SparkFun Electronics:](#)

[COM-00102](#)